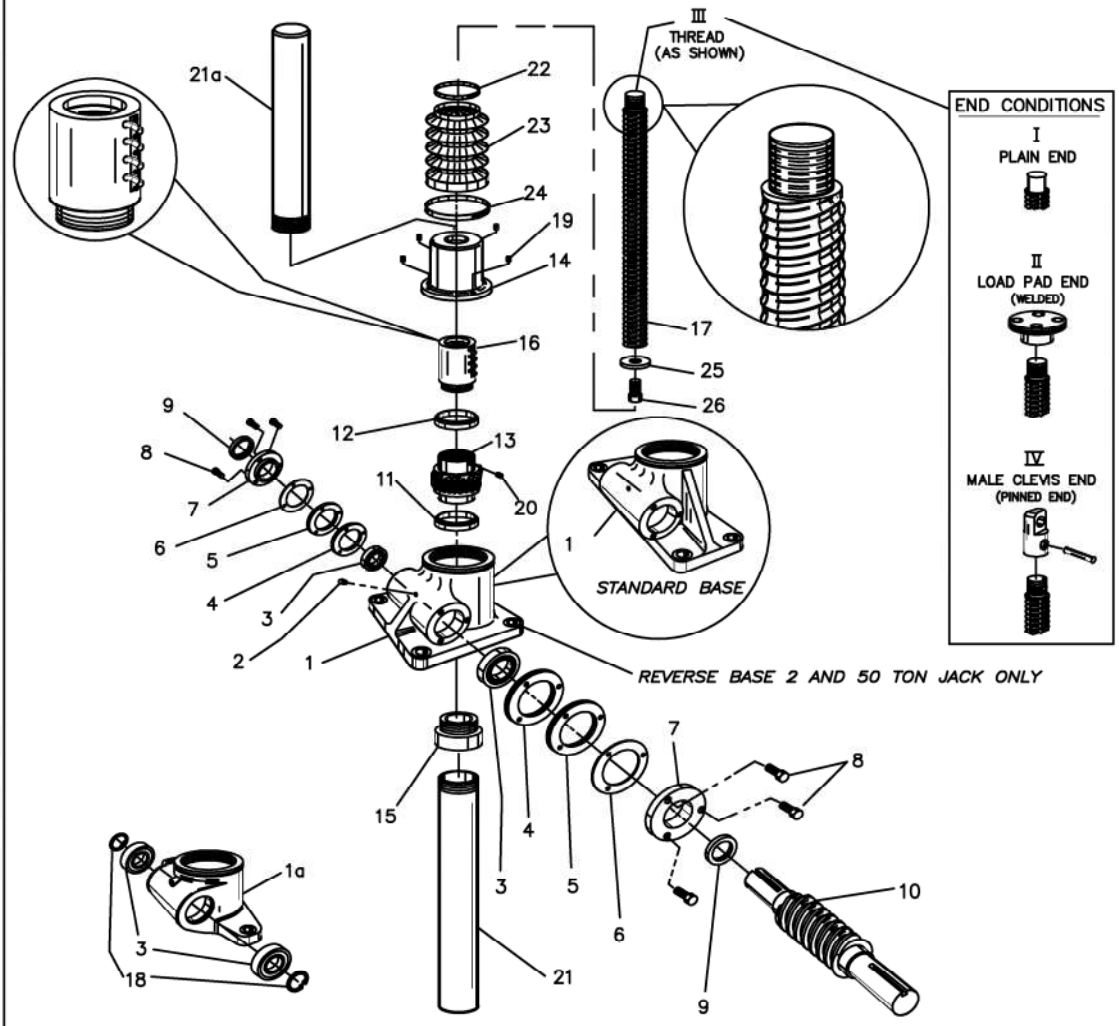
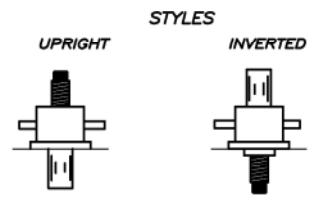


### 3-3 Exploded View – Translating Jack

**PARTS LIST JOYCE WORM GEAR BALL SCREW JACKS**  
 Models "WB", "WBL", "HWB" And "HWBL" Translating Screw Model  
 (Upright Styles shown for purpose of illustration)



**JOYCE** [www.joycedayton.com](http://www.joycedayton.com)  
 (937) 294-6261  
 Serial No. XXXXXXX



### 3-4 Parts List for Translating Jack

#### Parts list for Translating Jack

Item	Translating
1	Sleeve
1a	Sleeve (miniature jack)
2	Grease Fitting
3	Worm Shaft Bearing (2)
4	Shim (2)
5	Shim (2)
6	Shim (2)
7	Bearing Cap (2)
8	Bearing Cap Screw (6)
9	Worm Shaft Seal (2)
10	Worm (Input Shaft)
11	Lower Thrust Bearing
12	Upper Thrust Bearing
13	Wormgear
14	Sleeve Cap
15	Bushing (inverted only)
16	Ball Nut
17	Ball Screw
18	Retaining Ring (miniature jacks only) (2)
19	Set Screw - Sleeve Cap (4)
20	Set Screw - Wormgear (3)
21	Protection Tube - upright
21a	Protection Tube - inverted
22	Top Boot Clamp - if equipped
23	Boot - if equipped
24	Bottom Boot Clamp - if equipped
25	Ball Screw Retainer
26	Ball Screw Retainer Screw