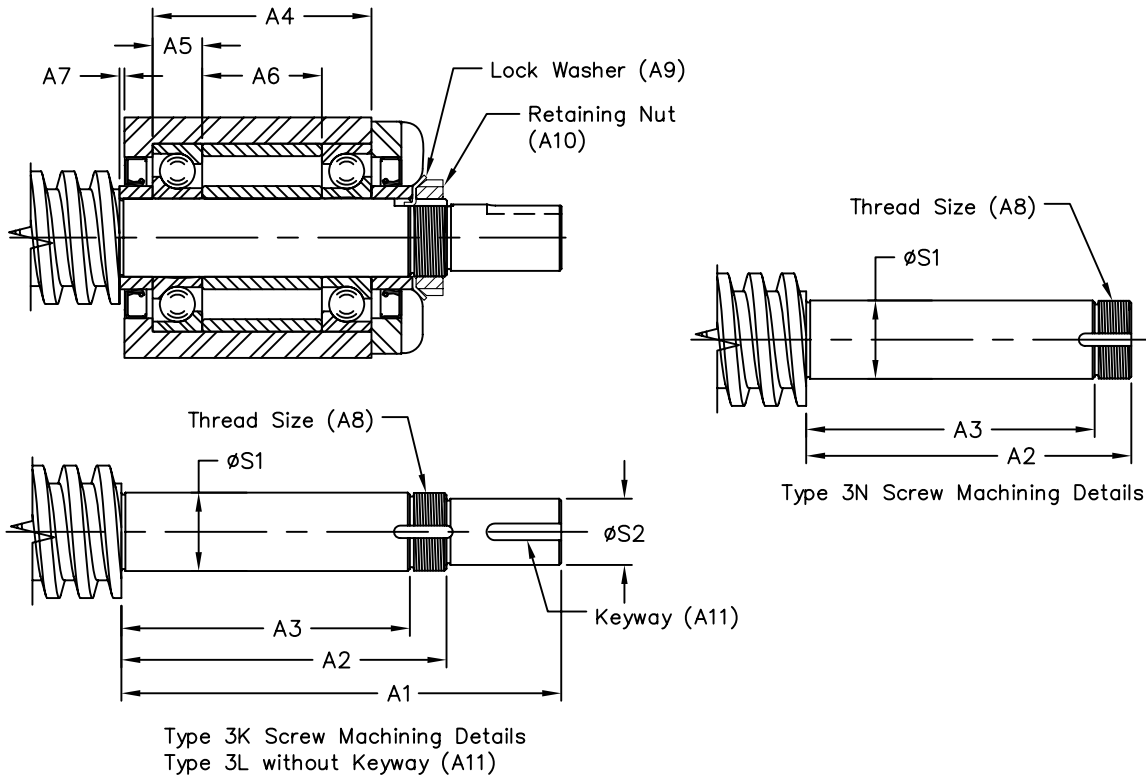
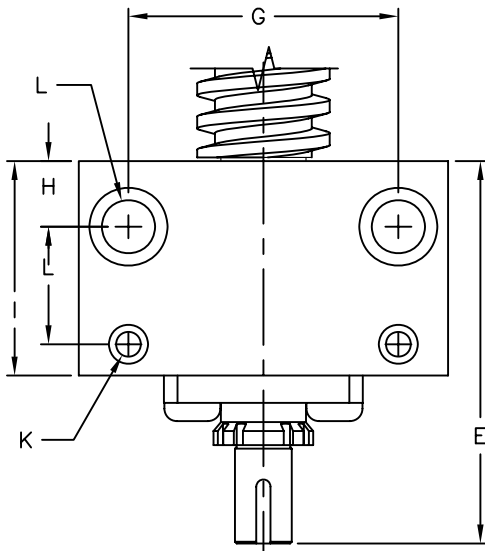
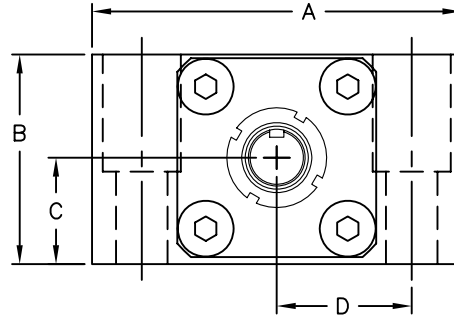


Joyce Machine Screw - FB Bearing Mounts Machine Screw End Machining Details

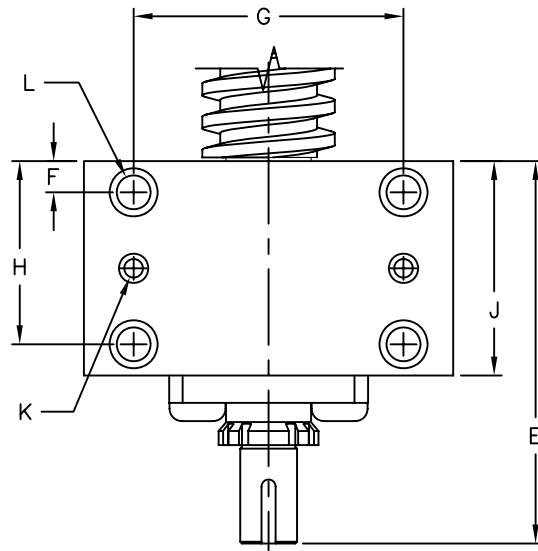


Screw Number	Bearing Mount No.	$\phi S1$	$\phi S2$	A1	A2	A3	A4	A5	A6	A7	A8	A9	A10	A11
SS050R013A		.3544 .3541	.250 .249	3.23	2.60	1.98	1.240	.315	.063	.035	5/16-24 UNF	N/A	N/A	3/32 X 1/2
SS063R013S SS063R025S SS063R050A	FB-10	.3940 .3936	.312 .311	3.50	2.75	2.25	1.515	.354	.825	.050	.391-32 UNS	W-00	N-00	1/8 X 1/2
AS075R020A AS088R050A	FB-12	.4726 .4723	.406 .405	4.30	3.00	2.35	1.850	.472	.923	.038	.469-32 UNS	W-01	N-01	1/8 X 5/8
AS100R025A AS100R050A	FB-15	.5908 .5905	.500 .499	4.62	3.31	2.73	2.000	.512	.995	.035	.586-32 UNS	W-02	N-02	1/8 X 5/8
AS100R010A SS100R100A AS125R025A	FB-20	.7877 .7873	.625 .624	5.05	3.80	3.10	2.375	.590	1.217	.035	.781-32 UNS	W-04	N-04	3/16 X 5/8
AS150R025A AS150R038A AS150R050A	FB-25	.9846 .9842	.750 .749	6.06	4.50	3.75	2.815	.669	1.500	.083	.969-32 UNS	W-05	N-05	3/16 X 1
SS150R038A AS200R025A AS200R050A	FB-30	1.1814 1.1810	1.000 .999	6.67	4.92	4.20	3.300	.748	1.828	.075	1.173-18 UNS	W-06	N-06	1/4 X 1
AS225R025A AS225R050A		1.5752 1.5747	1.375 1.374	8.15	5.90	5.13	4.236	.906	2.45	.035	1.563-18 UNS	W-08	N-08	5/16 X 1 1/2
AS250R025A AS250R050A		1.7721 1.7716	1.375 1.374	8.62	6.37	5.60	4.694	.984	2.75	.035	1.767-18 UNS	W-09	N-09	5/16 X 1 1/2

Joyce Machine Screw - FB Bearing Mounts



Plan View For
FB-20, 25, & 30



Plan View For FB-10,
12, & 15

Screw Number	Bearing Mount No.	A	B	C	D	E	F	G	H	I	J	K	L
SS063R013S SS063R025S SS063R050A	FB-10	3.000	1.875	1.000	1.125	3.450	.375	2.250	1.500	.938	1.875	.250 Thru .375 C'Bore #5 Taper Pin	.406 Thru .625 C'Bore 1.130 Deep
AS075R020A AS088R050A	FB-12	3.000	1.875	1.000	1.125	4.262	.438	2.250	1.688	1.063	2.125	.250 Thru .375 C'Bore #5 Taper Pin	.406 Thru .625 C'Bore 1.130 Deep
AS100R025A AS100R050A	FB-15	3.500	2.125	1.125	1.250	4.585	.500	2.500	1.875	1.188	2.375	.250 Thru .375 C'Bore #5 Taper Pin	.406 Thru .625 C'Bore 1.310 Deep
AS100R010A SS100R100A AS125R025A	FB-20	4.500	2.750	1.438	1.625	5.015	.937	3.250	N/A	2.125	2.750	.437 Thru .687 C'Bore #8 Taper Pin	.688 Thru 1.000 C'Bore 1.625 Deep
AS150R025A AS150R038A AS150R050A	FB-25	6.500	3.690	1.875	2.375	5.977	.970	4.750	N/A	2.750	3.250	.437 Thru .687 C'Bore #8 Taper Pin	.937 Thru 1.375 C'Bore 2.250 Deep
SS150R038A AS200R025A AS200R050A	FB-30	6.500	3.690	1.875	2.375	6.595	1.156	4.750	N/A	3.225	3.725	.437 Thru .687 C'Bore #8 Taper Pin	.937 Thru 1.375 C'Bore 2.250 Deep