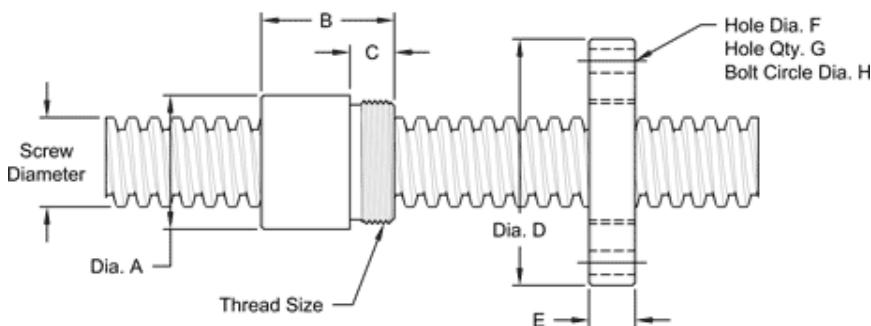


## TR40-9 SINGLE LEAD TRAPEZOIDAL

This 40 mm. diameter single lead metric (trapezoidal) screw has a 9 mm lead. It is available in alloy steel or stainless steel material with corresponding aluminum bronze nuts. Choose from right-hand or left-hand threads.

METRIC SCREW SPECIFICATIONS	RH	LH
ALLOY STEEL SCREW PART NO.	TS 040 R 009 A	TS 040 L 009 A
STAINLESS STEEL SCRW PART NO.	TS 040 R 009 S	TS 040 L 009 S
THREAD FORM	TRAPEZOIDAL	
SCREW DIAMETER - TURNS/MM	TR 40 - 9	
LEAD	9 MM.	
ROOT DIAMETER	29.37 MM.	
SCREW WEIGHT	8.16 KG./M. (5.48 LB./FT.)	
TORQUE TO RAISE 1 KN	3.709 NM (32.8 IN.-LB.)	
MAXIMUM SCREW LENGTH	3.66 M. (12 FT.)	

## Nut and Flange Specifications



NUT SPECIFICATIONS	RH	LH
NUT PART NO.	TN 040 R 009 B	TN 040 L 009 B
NUT WITH FLANGE PART NO.	TF 040 R 009	TF 040 L 009
DYNAMIC LOAD CAPACITY (LBS)	50 KN (11,250 LB.)	
STATIC LOAD CAPACITY KG. (LBS)	102 KN (23,000 LB.)	
EFFICIENCY	38.9%	
MATERIAL	BRONZE	
NOMINAL DIAMETER "A"	60 MM.	
NUT LENGTH "B"	60 MM.	
THREAD LENGTH "C"	20 MM.	
THREAD SIZE	M55 X 1.5	
FLANGE PART NO.	FL-5500	
FLANGE DIAMETER "D"	120 MM.	
FLANGE THICKNESS "E"	21 MM.	
FLANGE HOLE DIAMETER "F"	11 MM.	
NUMBER OF HOLES IN FLANGE "G"	4	
FLANGE BOLT CIRCLE "H"	90 MM.	
FLANGE MATERIAL	BLACK OXIDE COATED STEEL	