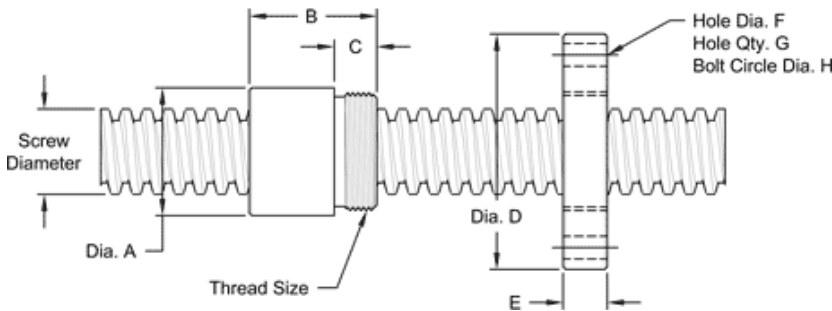


## TR 30-6 SINGLE LEAD TRAPEZOIDAL

This 30 mm. diameter single lead metric (trapezoidal) screw has a 6 mm lead. It is available in alloy steel or stainless steel material with corresponding aluminum bronze nuts. Choose from right-hand or left-hand threads.

METRIC SCREW SPECIFICATIONS	RH	LH
ALLOY STEEL SCREW PART NO.	TS 030 R 006 A	TS 030 L 006 A
STAINLESS STEEL SCREW PART NO.	TS 030 L 006 S	TS 030 L 006 S
THREAD FORM	TRAPEZOIDAL	
SCREW DIAMETER - TURNS/MM	TR 30 - 6	
LEAD	6 MM.	
ROOT DIAMETER	22.47 MM.	
SCREW WEIGHT	5.01 KG./M. (3.36 LB./FT.)	
TORQUE TO RAISE 1 KN	2.680 NM (23.7 IN.-LB.)	
MAXIMUM SCREW LENGTH	3.66 M. (12 FT.)	

### Nut and Flange Specifications



NUT SPECIFICATIONS	RH	LH
NUT PART NO.	TN 030 R 006 B	TN 030 L 006 B
NUT WITH FLANGE PART NO.	TF 030 R 006	TF 030 L 006
DYNAMIC LOAD CAPACITY (LBS)	25 KN (5,620 LB.)	
STATIC LOAD CAPACITY KG. (LBS)	80 KN (17,985 LB.)	
EFFICIENCY	35.9%	
MATERIAL	BRONZE	
NOMINAL DIAMETER "A"	60 MM.	
NUT LENGTH "B"	60 MM.	
THREAD LENGTH "C"	20 MM.	
THREAD SIZE	M55 X 1.5	
FLANGE PART NO.	FL-5500	
FLANGE DIAMETER "D"	120 MM.	
FLANGE THICKNESS "E"	21 MM.	
FLANGE HOLE DIAMETER "F"	11 MM.	
NUMBER OF HOLES IN FLANGE "G"	4	
FLANGE BOLT CIRCLE "H"	90 MM.	
FLANGE MATERIAL	BLACK OXIDE COATED STEEL	