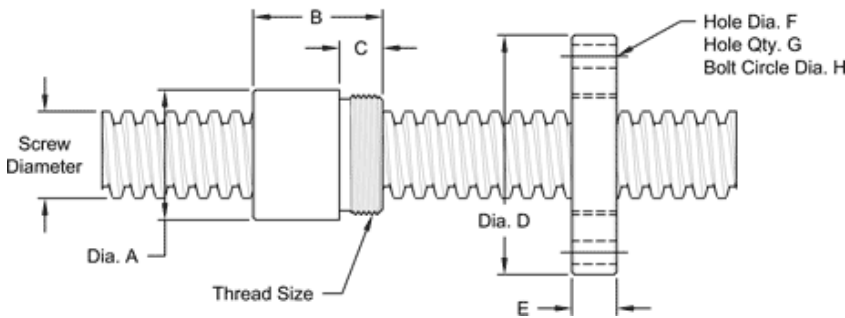


TR26-6 SINGLE LEAD TRAPEZOIDAL

This 26 mm. diameter single lead metric (trapezoidal) screw has a 6 mm lead. It is available in alloy steel or stainless steel material with corresponding aluminum bronze nuts. Choose from right-hand or left-hand threads.

METRIC SCREW SPECIFICATIONS	RH	LH
ALLOY STEEL SCREW PART NO.	TS 026 R 006 A	TS 026 L 006 A
STAINLESS STEEL SCREW PART NO.	TS 025 R 006 S	TS 026 L 006 S
THREAD FORM	TRAPEZOIDAL	
SCREW DIAMETER - TURNS/MM	TR 26 - 6	
LEAD	6 MM.	
ROOT DIAMETER	18.48 MM.	
SCREW WEIGHT	3.2 KG./M. (2.15 LB./FT.)	
TORQUE TO RAISE 1 KN	2.435 NM (21.6 IN.-LB.)	
MAXIMUM SCREW LENGTH	3.66 M. (12 FT.)	

Nut and Flange Specifications



NUT SPECIFICATIONS	RH	LH
NUT PART NO.	TN 026 R 006 B	TN 026 L 006 B
NUT WITH FLANGE PART NO.	TF 026 R 006	TF 026 L 006
DYNAMIC LOAD CAPACITY (LBS)	22.4 KN (5,000 LB.)	
STATIC LOAD CAPACITY KG. (LBS)	48.5 KN (10,900 LB.)	
EFFICIENCY	39.6%	
MATERIAL	BRONZE	
NOMINAL DIAMETER "A"	45 MM.	
NUT LENGTH "B"	45 MM.	
THREAD LENGTH "C"	15 MM.	
THREAD SIZE	M40 X 1.5	
FLANGE PART NO.	FL-4000	
FLANGE DIAMETER "D"	85 MM.	
FLANGE THICKNESS "E"	16 MM.	
FLANGE HOLE DIAMETER "F"	7 MM.	
NUMBER OF HOLES IN FLANGE "G"	4	
FLANGE BOLT CIRCLE "H"	70 MM.	
FLANGE MATERIAL	BLACK OXIDE COATED STEEL	