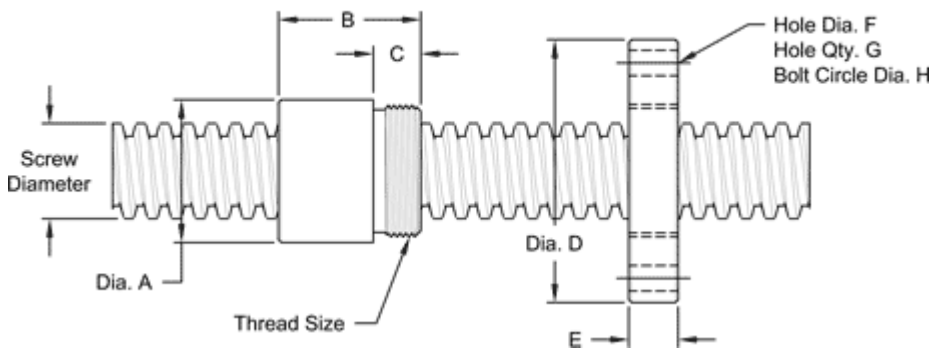


## TR20-5 SINGLE LEAD TRAPEZOIDAL

This 20 mm. diameter single lead metric (trapezoidal) screw has a 5 mm lead. It is available in alloy steel or stainless steel material with corresponding aluminum bronze nuts. Choose from right-hand or left-hand threads.

METRIC SCREW SPECIFICATIONS	RH	LH
ALLOY STEEL SCREW PART NO.	TS 020 R 005 A	TS 020 L 005 A
STAINLESS STEEL SCREW PART NO.	TS 020 R 005 S	TS 020 L 005 S
THREAD FORM	TRAPEZOIDAL	
SCREW DIAMETER - TURNS/MM	TR 20 - 5	
LEAD	5 MM.	
ROOT DIAMETER	14.03 MM.	
SCREW WEIGHT	2.0 KG /M. (1.34 LB./FT.)	
TORQUE TO RAISE 1 KN	1.928 NM (17.1 IN.-LB.)	
MAXIMUM SCREW LENGTH	3.66 M. (12 FT.)	

## Nut and Flange Specifications



NUT SPECIFICATIONS	RH	LH
NUT PART NO.	TN 020 R 005 B	TN 020 L 005 B
NUT WITH FLANGE PART NO.	TF 020 R 005	TF 020 L 005
DYNAMIC LOAD CAPACITY (LBS)	10 KN (2,248 LB.)	
STATIC LOAD CAPACITY KG. (LBS)	45 KN (10,116 LB.)	
EFFICIENCY	41.8%	
MATERIAL	BRONZE	
NOMINAL DIAMETER "A"	34 MM.	
NUT LENGTH "B"	32 MM.	
THREAD LENGTH "C"	13 MM.	
THREAD SIZE	M30 X 1.5	
FLANGE PART NO.	FL-3000	
FLANGE DIAMETER "D"	75 MM.	
FLANGE THICKNESS "E"	14 MM.	
FLANGE HOLE DIAMETER "F"	7 MM.	
NUMBER OF HOLES IN FLANGE "G"	4	
FLANGE BOLT CIRCLE "H"	60 MM.	
FLANGE MATERIAL	BLACK OXIDE COATED STEEL	