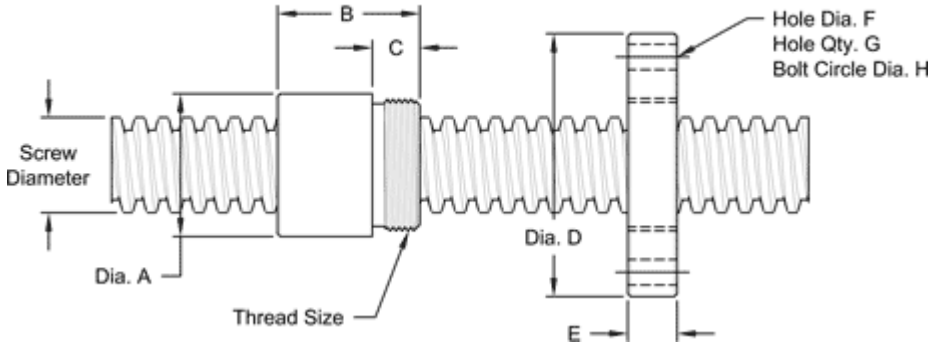


## 1" -2 DOUBLE LEAD ACME

This 1" – 2 double lead acme machine screw is available in both alloy steel and stainless steel with a corresponding aluminum bronze nut. Choose from right-hand or left-hand threads.

MACHINE SCREW SPECIFICATIONS	RH	LH
ALLOY STEEL SCREW PART NO.	AS 100 R 050 A	AS 100 L 050 A
STAINLESS STEEL SCREW PART NO.	AS 100 R 050 S	AS 100 L 050 S
THHREAD FORM	ACME	
SCREW DIAMETER - TURNS / INCH	1"-2	
PITCH / LEAD	0.250 IN. /0.500 IN.	
ROOT DIAMETER	0.699 IN.	
SCREW WEIGHT ((IN./FT.)	2.2	
TORQUE TO RAISE 1 POUND	0.140 IN. LB.	
MAXIMUM SCREW LENGTH	12 FEET	

### Nut and Flange Specifications



NUT SPECIFICATIONS	RH	LH
NUT PART NUMBER	AN 100 R 050 B	AN 100 L 050 B
NUT WITH FLANGE	AF 100 R 050	AF 100 L 050
DYNAMIC LOAD CAPACITY (LBS)	5,000	
STATIC LOAD CAPACITY (LBS)	16,000	
EFFICIENCY	58.20%	
MATERIAL	BRONZE	
NOMINAL DIAMETER "A"	1.50 IN.	
NUT LENGTH "B"	1.50 IN.	
THREAD LENGTH "C"	0.50 IN.	
THREAD SIZE	1.375-16 UN	
<b>FLANGE PART NO.</b>	<b>FL-1375</b>	
FLANGE DIAMETER "D"	2.75 IN.	
FLANGE THICKNESS "E"	0.52 IN.	
FLANGE HOLE DIAMETER "F"	0.266 IN.	
NUMBER OF HOLES IN FLANGE "G"	4	
FLANGE BOLT CIRCLE "H"	2.260 IN.	
FLANGE MATERIAL	BLACK OXIDE COATED STEE	