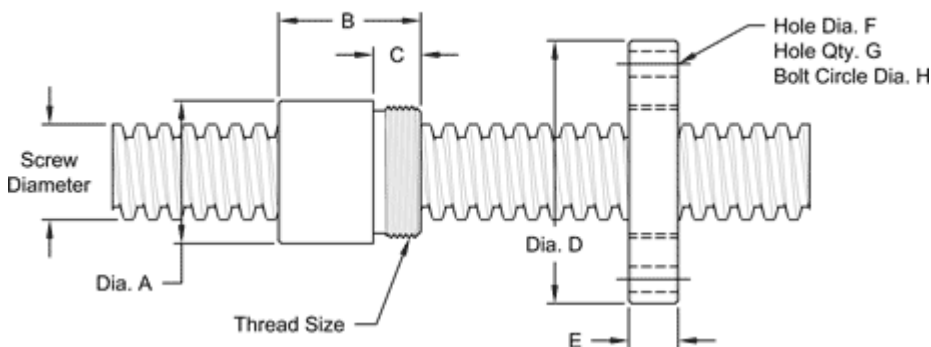


## 1" - 1 MULTIPLE LEAD STUB ACME

This 1" – 1 multiple lead stub acme machine screw is available in alloy steel with a corresponding aluminum bronze nut. Right-hand threads are available.

MACHINE SCREW SPECIFICATIONS	RH
ALLOY STEEL SCREW PART NO.	SS 100 R 100 A
THREAD FORM	STUB ACME
SCREW DIAMETER (TURNS/INCH)	1-1
PITCH / LEAD	0.010IN./1.00 IN.
ROOT DIAMETER	.930 IN.
SCREW WEIGHT (LBS./FT.)	2.4
TORQUE TO RAISE 1 POUND	0.233 IN.- LB.
MAXIMUM SCREW LENGTH	12 FEET

### Nut and Flange Specifications



NUT SPECIFICATIONS	RH
NUT PART NO.	SN 100 R 100 B
NUT WITH FLANGE PART NO.	SN 100 R 100
DYNAMIC LOAD CAPACITY (LBS.)	5,000
STATIC LOAD CAPACITY (LBS.)	16,000
EFFICIENCY	69.70%
MATERIAL	BRONZE
NOMINAL DIAMETER "A"	1.50 IN.
NUT LENGTH "B"	1.50 IN.
THREAD LENGTH "C"	0.50 IN.
THREAD SIZE	1.375-16 UN
FLANGE PART NUMBER	FL-1375
FLANGE DIAMETER "D"	2.75 IN.
FLANGE THICKNESS "E"	0.52 IN.
FLANGE HOLE DIAMETER "F"	0.266 IN.
NUMBER OF HOLES IN FLANGE "G"	4
FLANGE BOLT CIRCLE "H"	2.260 IN.
FLANGE MATERIAL	BLACK OXIDE COATED STEEL