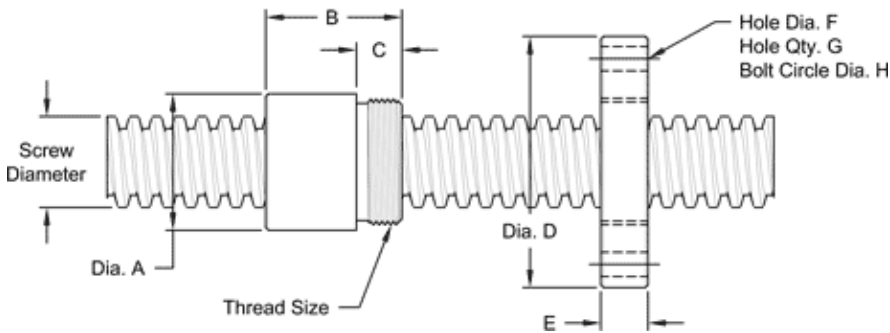


7/8" - 2 DOUBLE LEAD ACME

This 7/8 – 2 Double lead acme machine screw is available in both alloy steel and stainless steel with a corresponding aluminum bronze nut. Choose from right-hand or left-hand threads.

MACHINE SCREW SPECIFICATIONS	RH	LH
ALLOY STEEL SCREW PART NO.	AS 088 R 050 A	AS 088 L 050 A
STAINLESS STEEL SCREW PART NO.	AS 088 R 050 S	AS 088 L 050 S
THREAD FORM		ACME
SCREW DIAMETER (TURNS / INCH)		7/8" - 2
PITCH / LEAD		0.250 IN./0.500 IN.
ROOT DIAMETER		0.574 IN.
SCREW WEIGHT (LBS. / FOOT)		1.7
TORQUE TO RAISE 1 POUND		0.132 IN.- LB.
MAXIMUM SCREW LENGTH		12 FEET

Nut and Flange Specifications



NUT SPECIFICATIONS	RH	LH
NUT PART NO.	AN 088 R 050 B	AN 088 L 050 B
NUT WITH FLANGE PART NO.	AF 088 R 050	AF 088 L 050
DYNAMIC LOAD CAPACITY (LBS.)		3,828
STATIC LOAD CAPACITY (LBS.)		12,250
EFFICIENCY		61.5%
MATERIAL		BRONZE
NOMINAL DIAMETER "A"		1.50 IN.
NUT LENGTH "B"		1.50 IN.
THREAD LENGTH "C"		0.50 IN.
THREAD SIZE		1.375-16 UN
FLANGE PART NO.	FL-1375	
FLANGE DIAMETER "D"		2.75 IN.
FLANGE THICKNESS "E"		0.52 IN.
FLANGE HOLE DIAMETER "F"		0.266 IN.
NUMBER OF HOLES IN FLANGE "G"		4
FLANGE BOLT CIRCLE "H"		2.260 IN.
FLANGE MATERIAL		BLACK OXIDE COATED STEEL