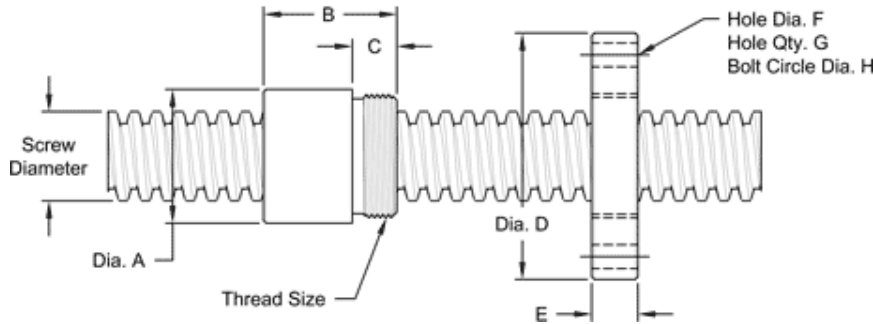


## 3/4" -5 SINGLE LEAD ACME

This 3/4" – 5 single lead acme machine screw is available in both alloy steel and stainless steel with a corresponding aluminum bronze nut. Choose from right-hand or left-hand threads.

### Nut and Flange Specifications

MACHINE SCREW JACK SPECIFICATIONS	RH	LH
ALLOY STEEL SCREW PART NO.	AS 075 R 020 A	AS 075 L 020 A
STAINLESS STEEL SCREW PART NO.	AS 075 R 020 S	AS 075 L 020 S
THREAD FORM	ACME	
SCREW DIAMETER (TURNS / INCH)	3/4-5	
PITCH / LEAD	0.200 IN.	
ROOT DIAMETER	0.502 IN.	
SCREW WEIGHT (LBS / FOOT)	1.2	
TORQUE TO RAISE 1 POUND	0.075 IN.- LB.	
MAXIMUM SCREW LENGTH	12 FEET	



NUT SPECIFICATIONS	RH	LH
NUT PART NO.	AN 075 R 020 B	AN 075 L 020 B
NUT WITH FLANGE PART NO.	AF 075 R 020	AF 075 L 020
DYNAMIC LOAD CAPACITY (LBS.)	2,812	
STATIC LOAD CAPACITY 9LBS.)	9,000	
EFFICIENCY	43.6%	
MATERIAL	BRONZE	
NOMINAL DIAMETER "A"	1.12 IN.	
NUT LENGTH "B"	1.25 IN.	
THREAD LENGTH "C"	0.50 IN.	
THREAD SIZE	1.000 -18 UN	
FLANGE PART NO.	FL-1000	
FLANGE DIAMETER "D"	2.63 IN.	
FLANGE THICKNESS "E"	0.53 IN.	
FLANGE HOLE DIAMETER "F"	0.266 IN.	
NUMBER OF HOLES IN FLANGE "G"	4	
FLANGE BOLT CIRCLE "H"	2.090 IN.	
FLANGE MATERIAL	BLACK OXIDE COATED STEEL	