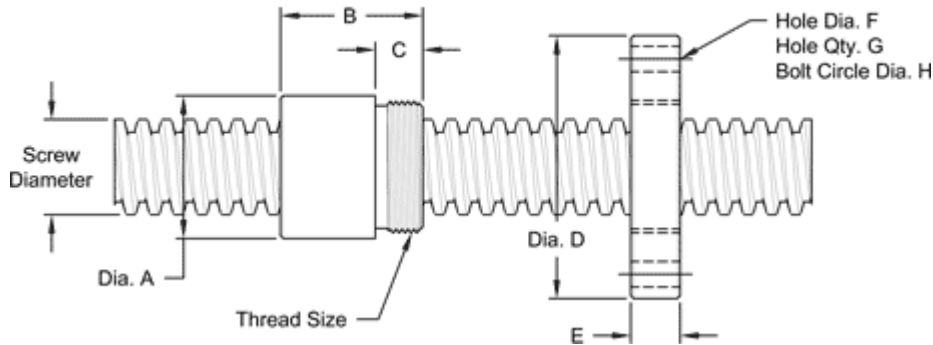


5/8" - 8 SINGLE LEAD STUB ACME

This 5/8 - 8 stub acme machine screw is available in both alloy steel and stainless steel with a corresponding aluminum bronze nut. Choose from right-hand threads or left-hand threads.

MACHINE SCREW SPECIFICATIONS	RH	LH
ALLOY STEEL SCREW PART NO.	SS 063 R 013 A	SS 063 L 013 A
STAINLESS STEEL SCREW PART NO.	SS 063 R 013 S	SS 063 L 013 S
THREAD FORM	STUB ACME	
SCREW DIAMETER - TURNS / INCH	5/8 - 8	
PITCH / LEAD	0.125 IN.	
ROOT DIAMETER	0.507 IN.	
SCREW WEIGHT (LBS / INCH)	0.85	
TORQUE TO RAISE 1 POUND	0.058 IN.-LB.	
MAXIMUM SCREW LENGTH	12 FEET	

Nut and Flange Specifications



NUT SPECIFICATIONS	RH	LH
NUT PART NO.	SN 063 R 013 B	SN 063 L 013 B
FLANGED NUT PART NO	SF 063 R 013	SF 063 L 013
DYNAMIC LOAD CAPACITY (LBS)	1,953	
STATIC LOAD CAPACITY (LBS)	6,250	
EFFICIENCY	35.0 %	
MATERIAL	BRONZE	
NOMINAL DIAMETER "A"	1.12 IN.	
NUT LENGTH "B"	1.00 IN.	
THREAD LENGTH "C"	0.50 IN.	
THREAD SIZE	0.937-16 UN	
FLANGE PART NO.	FL-0937	
FLANGE DIAMETER "D"	2.60 IN.	
FLANGE THICKNESS "E"	0.53 IN.	
FLANGE HOLE DIAMETER "F"	0.266 IN.	
NUMBER OF HOLES IN FLANGE "G"	4	
FLANGE BOLT CIRCLE "H"	2.090 IN.	
FLANGE MATERIAL	BLACK OXIDE COATED STEEL	