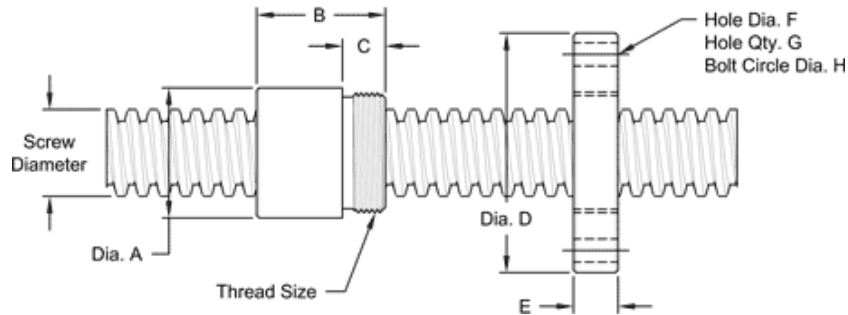


**This 5"-1 1/2 single lead acme machine screw** is available in both alloy steel and stainless steel with a corresponding aluminum bronze nut. This is available with right-hand or left-hand threads.

MACHINE SCREW SPECIFICATIONS	RH	LH
ALLOY STEEL SCREW PART NO.	AS 500 R 067 A	AS 500 L 067 A
STAINLESS STEEL SCREW PART NO.	AS 500 R 067 S	AS 500 L 067 S
THREAD FORM		ACME
SCREW DIAMETER - TURNS/INCH		5" - 1 1/2
PITCH/LEAD		0.667 IN.
ROOT DIAMETER		4.256 IN.
SCREW WEIGHT (LB./FT)		57.5
TORQUE TO RAISE 1 POUND		0.418 IN.-LB.
MAXIMUM SCREW LENGTH		20 FEET*

\*12 feet for stainless steel stock

### Nut and Flange Specifications



NUT SPECIFICATIONS	RH	LH
NUT PART NO.	AN 500 R 067 B	AN 500 L 067 B
NUT WITH FLANGE PART NO.	AF 500 R 067	AF 500 L 067
DYNAMIC LOAD CAPACITY (LBS)		150,000
STATIC LOAD CAPACITY (LBS.)		470,000
EFFICIENCY		26.7%
MATERIAL		BRONZE
NOMINAL DIAMETER "A"		7.50 IN.
NUT LENGTH "B"		7.50 IN.
THREAD LENGTH "C"		2.00 IN.
THREAD SIZE		7.066-8 UN
FLANGE PART NUMBER	FL-7066	
FLANGE DIAMETER "D"		12.00 IN
FLANGE THICKNESS "E"		2.020 IN.
FLANGE HOLE DIAMETER "F"		1.125 IN.
NUMBER OF HOLES IN FLANGE "G"		8
FLANGE BOLT CIRCLE "H"		10.000 IN.
FLANGE MATERIAL		BLACK OXIDE COATED STEEL