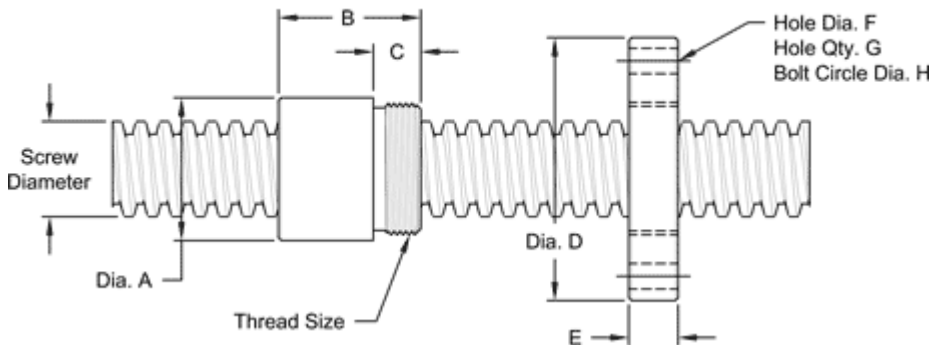


## 5" - 1½ SINGLE LEAD ACME

This 5"-1 1/2 single lead acme machine screw is available in both alloy steel and stainless steel with a corresponding aluminum bronze nut. This is available with right-hand or left-hand threads.

| MACHINE SCREW SPECIFICATIONS   | RH             | LH             |
|--------------------------------|----------------|----------------|
| ALLOY STEEL SCREW PART NO.     | AS 500 R 067 A | AS 500 L 067 A |
| STAINLESS STEEL SCREW PART NO. | AS 500 R 067 S | AS 500 L 067 S |
| THREAD FORM                    |                | ACME           |
| SCREW DIAMETER - TURNS/INCH    |                | 5" - 1 1/2     |
| PITCH/LEAD                     |                | 0.667 IN.      |
| ROOT DIAMETER                  |                | 4.256 IN.      |
| SCREW WEIGHT (LB/FT)           |                | 57.5           |
| TORQUE TO RAISE 1 POUND        |                | 0.418 IN.-LB.  |
| MAXIMUM SCREW LENGTH           |                | 20 FEET        |

### Nut and Flange Specifications



| NUT SPECIFICATIONS            | RH             | LH                       |
|-------------------------------|----------------|--------------------------|
| NUT PART NO.                  | AN 500 R 067 B | AN 500 L 067 B           |
| NUT WITH FLANGE PART NO.      | AF 500 R 067   | AF 500 L 067             |
| DYNAMIC LOAD CAPACITY (LBS)   |                | 150,000                  |
| STATIC LOAD CAPACITY (LBS)    |                | 470,000                  |
| EFFICIENCY                    |                | 26.7%                    |
| MATERIAL                      |                | BRONZE                   |
| NOMINAL DIAMETER "A"          |                | 7.50 IN.                 |
| NUT LENGTH "B"                |                | 7.50 IN.                 |
| THREAD LENGTH "C"             |                | 2.00 IN.                 |
| THREAD SIZE                   |                | 7.066-8 UN               |
| FLANGE PART NUMBER            | FL-7066        |                          |
| FLANGE DIAMETER "D"           |                | 12.00 IN                 |
| FLANGE THICKNESS "E"          |                | 2.020 IN.                |
| FLANGE HOLE DIAMETER "F"      |                | 1.125 IN.                |
| NUMBER OF HOLES IN FLANGE "G" |                | 8                        |
| FLANGE BOLT CIRCLE "H"        |                | 10.000 IN.               |
| FLANGE MATERIAL               |                | BLACK OXIDE COATED STEEL |