

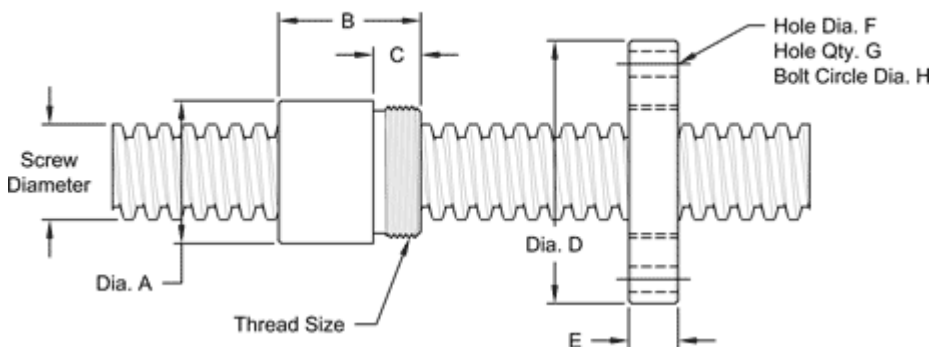
3 1/2" - 1 1/2" SINGLE LEAD ACME

This 3 1/2"-1 1/2 single lead stub acme machine screw is available in both alloy steel and stainless steel with a corresponding aluminum bronze nut. This is available with right-hand or left-hand threads.

MACHINE SCREW SPECIFICATIONS	RH	LH
ALLOY STEEL SCREW PART NO.	AS 350 R 067 A	AS 350 L 067 A
STAINLESS STEEL SCREW PART NO.	AS 350 R 067 S	AS 350 L 067 S
THREAD FORM		ACME
SCREW DIAMETER - TURNS/INCH		3 1/2" - 1 1/2
PITCH/LEAD		0.667 IN.
ROOT DIAMETER		2.760 IN.
SCREW WEIGHT (LB/FT)		30
TORQUE TO RAISE 1 POUND		0.313 IN.-LB.
MAXIMUM SCREW LENGTH		20 FEET*

*12 feet for stainless steel stock

Nut and Flange Specifications



NUT SPECIFICATIONS	RH	LH
NUT PART NO.	AN 350 R 067 B	AN 350 L 067 B
NUT WITH FLANGE PART NO.	AF 350 R 067	AF 350 L 067
DYNAMIC LOAD CAPACITY (LBS)		60,000
STATIC LOAD CAPACITY (LBS)		200,000
EFFICIENCY		34.8%
MATERIAL		BRONZE
NOMINAL DIAMETER "A"		4.50 IN.
NUT LENGTH "B"		4.50 IN.
THREAD LENGTH "C"		2.000 IN.
THREAD SIZE		4.325-12 UN
FLANGE PART NUMBER	FL-4325	
FLANGE DIAMETER "D"		7.38 IN
FLANGE THICKNESS "E"		2.020 IN.
FLANGE HOLE DIAMETER "F"		0.781 IN.
NUMBER OF HOLES IN FLANGE "G"		6
FLANGE BOLT CIRCLE "H"		6.250 IN.
FLANGE MATERIAL		BLACK OXIDE COATED STEEL