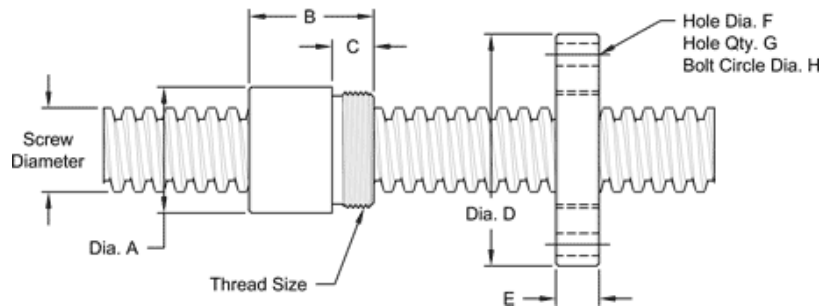


This 2 1/2"-2 single lead acme machine screw is available in both alloy steel and stainless steel with a corresponding aluminum bronze nut. Choose from right-hand or left-hand threads.

MACHINE SCREW SPECIFICATIONS	RH	LH
ALLOY STEEL SCREW PART NO.	AS 250 R 050 A	AS 250 L 050 A
STAINLESS STEEL SCREW PART NO.	AS 250 R 050 S	AS 250 L 050 S
THREAD FORM		ACME
SCREW DIAMETER - TURNS/INCH		2 1/2" - 2
PITCH/LEAD		0.500 IN.
ROOT DIAMETER		1.934 IN.
SCREW WEIGHT (LB./FT.)		13.4
TORQUE TO RAISE 1 POUND		0.227IN.-LB.
MAXIMUM SCREW LENGTH		20 FEET*

*12 feet stainless steel stock

Nut and Flange Specifications



NUT SPECIFICATIONS	RH	LH
NUT PART NUMBER	AN 250 R 050 B	AN 250 L 050 B
NUT WITH FLANGE	AF 250 R 050	AF 250 L 050
DYNAMIC LOAD CAPACITY (LBS.)		40,000
STATIC LOAD CAPACITY (LBS.)		100,000
EFFICIENCY		36.0%
MATERIAL		BRONZE
NOMINAL DIAMETER "A"		3.38 IN.
NUT LENGTH "B"		3.38 IN.
THREAD LENGTH "C"		1.560 IN.
THREAD SIZE		3.137-12 UN
FLANGE PART NUMBER		FL-3137
FLANGE DIAMETER "D"		5.38 IN
FLANGE THICKNESS "E"		1.580 IN.
FLANGE HOLE DIAMETER "F"		0.656 IN.
NUMBER OF HOLES IN FLANGE "G"		6
FLANGE BOLT CIRCLE "H"		4.375 IN.
FLANGE MATERIAL		BLACK OXIDE COATED STEEL