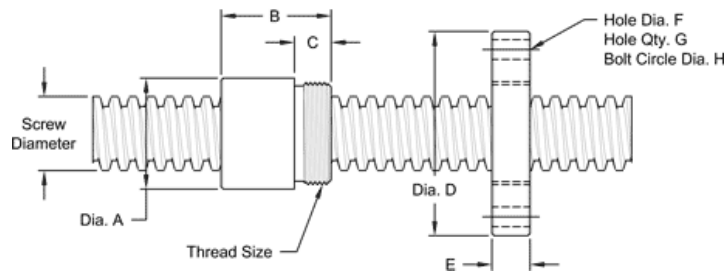


**This 2 1/2"-4 single lead acme machine screw** is available in both alloy steel and stainless steel with a corresponding aluminum bronze nut. This is available with right-hand or left-hand threads.

MACHINE SCREW SPECIFICATIONS	RH	LH
ALLOY STEEL SCREW PART NO.	AS 250 R 025 A	AS 250 L 025 A
STAINLESS STEEL SCREW PART NO.	AS 250 R 025 S	AS 250 L 025 S
THREAD FORM	ACME	
SCREW DIAMETER - TURNS/INCH	2 1/2" - 4	
PITCH/LEAD	0.250 IN.	
ROOT DIAMETER	2.193 IN.	
SCREW WEIGHT (LB./FT.)	13.4	
TORQUE TO RAISE 1 POUND	0.294 IN.-LB.	
MAXIMUM SCREW LENGTH	20 FEET*	

\* 12 feet for stainless steel stock

### Nut and Flange Specifications



NUT SPECIFICATIONS	RH	LH
NUT PART NUMBER	AN 250 R 025 B	AN 250 L 025 B
NUT WITH FLANGE	AF 250 R 025	AF 250 L 025
DYNAMIC LOAD CAPACITY (LBS.)	40,000	
STATIC LOAD CAPACITY (LBS.)	100,000	
EFFICIENCY	21.2%	
MATERIAL	BRONZE	
NOMINAL DIAMETER "A"	3.38 IN.	
NUT LENGTH "B"	3.38 IN.	
THREAD LENGTH "C"	1.560 IN.	
THREAD SIZE	3.137-12 UN	
FLANGE PART NUMBER	FL-3137	
FLANGE DIAMETER "D"	5.38 IN	
FLANGE THICKNESS "E"	1.580 IN.	
FLANGE HOLE DIAMETER "F"	0.656 IN.	
NUMBER OF HOLES IN FLANGE "G"	6	
FLANGE BOLT CIRCLE "H"	4.375 IN.	
FLANGE MATERIAL	BLACK OXIDE COATED STEEL	