

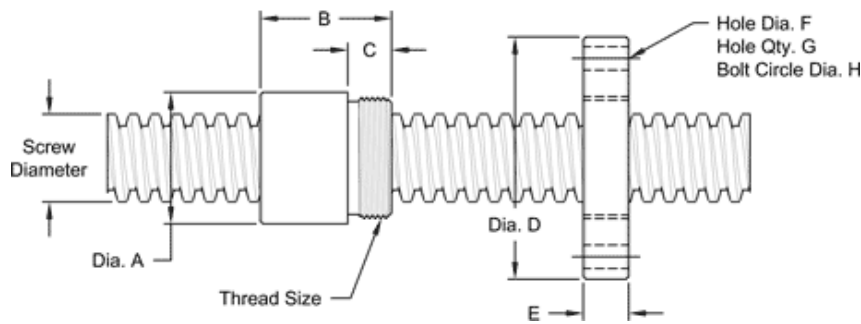
## 2"-2 SINGLE LEAD ACME

This 2"-2 single lead acme machine screw is available in both alloy steel and stainless steel with a corresponding aluminum bronze nut. These are available with right-hand or left-hand threads.

MACHINE SCREW SPECIFICATIONS	RH	LH
ALLOY STEEL SCREW PART NO.	AS 200 R 050 A	AS 200 L 050 A
STAINLESS STEEL SCREW PART NO.	AS 200 R 050 S	AS 200 L 050 S
THREAD FORM		ACME
SCREW DIAMETER - TURNS/INCH		2" - 2
PITCH/LEAD		0.500 IN.
ROOT DIAMETER		1.435 IN.
SCREW WEIGHT (LB/FT)		8.1
TORQUE TO RAISE 1 POUND		0.195 IN.-LB.
MAXIMUM SCREW LENGTH		20 FEET*

\* 12 feet for stainless steel stock

### Nut and Flange Specifications



NUT SPECIFICATIONS	RH	LH
NUT PART NUMBER	AN 200 R 050 B	AN 200 R 050 B
NUT WITH FLANGE	AF 20 0R 050	AF 200 R 050
DYNAMIC LOAD CAPACITY (LBS)		20,000
STATIC LOAD CAPACITY (LBS)		64,000
EFFICIENCY		41.9%
MATERIAL		BRONZE
NOMINAL DIAMETER "A"		2.75 IN.
NUT LENGTH "B"		2.75 IN.
THREAD LENGTH "C"		0.880 IN.
THREAD SIZE		2.548-18 UN
FLANGE PART NUMBER	FL-2548	
FLANGE DIAMETER "D"		4.94 IN
FLANGE THICKNESS "E"		0.895 IN.
FLANGE HOLE DIAMETER "F"		0.531 IN.
NUMBER OF HOLES IN FLANGE "G"		4
FLANGE BOLT CIRCLE "H"		4.062 IN.
FLANGE MATERIAL		BLACK OXIDE COATED STEEL