

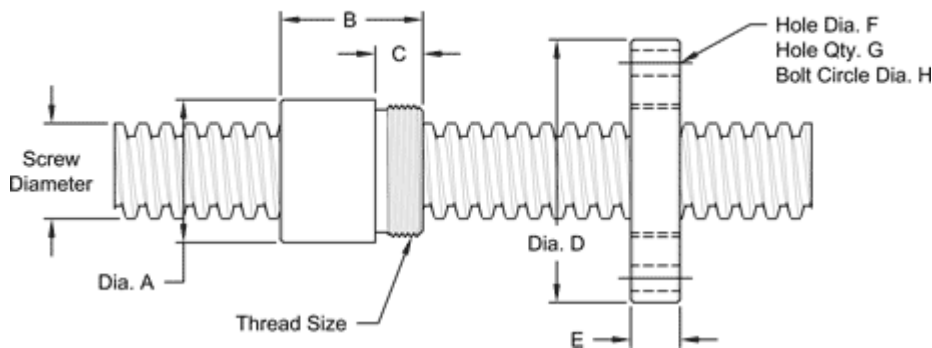
## 1 1/2"-2 2/3 SINGLE LEAD STUB ACME

This 1 1/2"-2 2/3 single lead STUB acme machine screw is available in both alloy steel and stainless steel with a corresponding aluminum bronze nut. Choose from right-hand or left-hand threads.

MACHINE SCREW SPECIFICATIONS	RH	LH
ALLOY STEEL SCREW PART NO.	SS 150 R 038 A	SS 150 L 038 A
STAINLESS STEEL SCREW PART NO.	SS 150 R 038 S	SS 150 L 038 S
THREAD FORM	STUB ACME	
SCREW DIAMETER - TURNS / INCH	1 1/2" - 2 2/3	
PITCH / LEAD	0.375 IN.	
ROOT DIAMETER	1.216 IN.	
SCREW WEIGHT (LBS./FT.)	4.6	
TORQUE TO RAISE 1 POUND	0.173 IN.-LB.	
MAXIMUM SCREW LENGTH	24 FEET*	

\* 12 feet for stainless steel stock

### Nut and Flange Specifications



NUT SPECIFICATIONS	RH	LH
NUT PART NO.	SN 150 R 038 B	SN 150 L 038 B
NUT WITH FLANGE PART NO.	SF 150 R 038	SF 150 L 038
DYNAMIC LOAD CAPACITY (LBS.)	11,250	
STATIC LOAD CAPACITY (LBS.)	36,000	
EFFICIENCY	40.5%	
MATERIAL	BRONZE	
NOMINAL HOLE DIAMETER "A"	2.12 IN.	
NUT LENGTH "B"	2.30 IN.	
THREAD LENGTH "C"	0.812 IN.	
THREAD SIZE	1.967-18 UN	
FLANGE PART NO.	FL-1967	
FLANGE DIAMETER "D"	4.20 IN.	
FLANGE THICKNESS "E"	0.832 IN.	
FLANGE HOLE DIAMETER "F"	0.397 IN.	
NUMBER OF HOLES IN FLANGE "G"	4	
FLANGE BOLT CIRCLE "H"	3.440 IN.	
FLANGE MATERIAL	BLACK OXIDE COATED STEEL	

