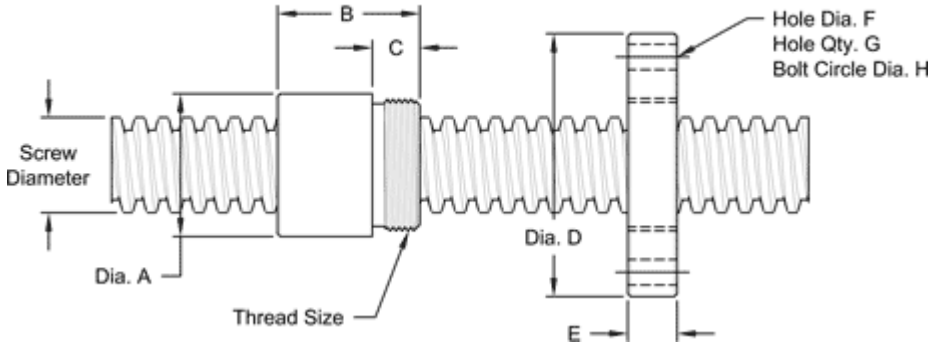


1 1/2" -4 SINGLE LEAD ACME

This 1 1/2" – 4 single lead acme machine screw is available in alloy steel and stainless steel with a corresponding aluminum bronze nut. Choose from right-hand or left-hand screw threads.

MACHINE SCREW SPECIFICATIONS	RH	LH
ALLOY STEEL SCREW PART NO.	AS 150 R 025 A	AS 150 L 025 A
STAINLESS STEEL SCREW PART NO.	AS 150 R 025 S	AS 150 L 025 S
THREAD FORM		ACME
SCREW DIAMETER (TURNS / INCH)		1 1/2" - 4
PITCH / LEAD		0.250 IN.
ROOT DIAMETER		1.196 IN.
SCREW WEIGHT (LBS./FT.)		5.0
TORQUE TO RAISE 1 POUND		0.130 IN.-LB.
MAXIMUM SCREW LENGTH		24 FEET

Nut and Flange Specifications



NUT SPECIFICATIONS	RH	LH
NUT PART NO.	AN 150 R 025 B	AN 150 L 025 B
NUT WITH FLANGE PART NO.	AF 150 R 025	AF 150 L 025
DYNAMIC LOAD CAPACITY (LBS.)		11,250
STATIC LOAD CAPACITY (LBS.)		36,000
EFFICIENCY		31.6%
MATERIAL		BRONZE
NOMINAL DIAMETER "A"		2.12 IN.
NUT LENGTH "B"		2.30 IN.
THREAD LENGTH "C"		0.812 IN.
THREAD SIZE		1.967-16 UN
FLANGE PART NO.	FL1967	
FLANGE DIAMETER "D"		4.20 IN.
FLANGE THICKNESS "E"		0.832 IN.
FLANGE HOLE DIAMETER "F"		0.397 IN.
NUMBER OF HOLES IN FLANGE "G"		4
FLANGE BOLT CIRCLE "H"		3.440 IN.
FLANGE MATERIAL		BLACK OXIDE COATED STEEL