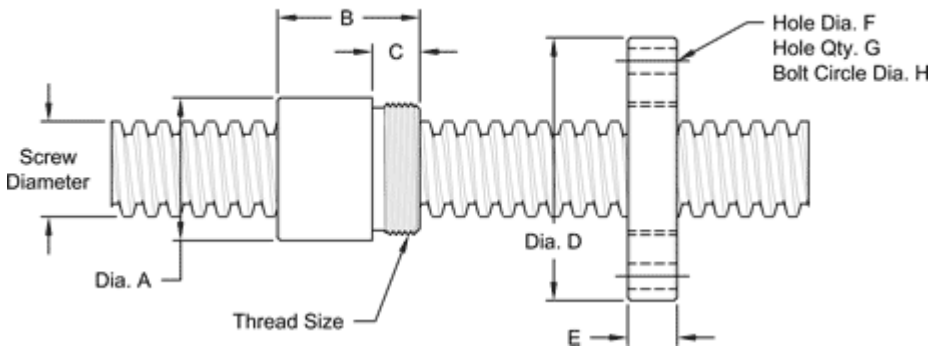


## 1/2" - 8 SINGLE LEAD STUB ACME

This 1/2 - 8 stub acme machine screw is available in both alloy steel and stainless steel with a corresponding aluminum bronze nut. Right hand threads are available.

MACHINE SCREW SPECIFICATIONS	RH
ALLOY STEEL SCREW PART NO.	SS 050 R 013 A
STAINLESS STEEL SCREW PART NO.	SS 050 R 013 S
THREAD FORM	STUB ACME
SCREW DIAMETER-TURNS / INCH	1/2 - 8
PITCH / LEAD	0.125 IN.
ROOT DIAMETER	0.38 IN.
SCREW WEIGHT (LB / FT)	0.53
TORQUE TO RAISE 1 POUND	0.050 IN - LB
MAXIMUM SCREW LENGTH	12 FEET

### Nut and Flange Specifications



NUT SPECIFICATIONS	RH
NUT PART NO.	SN 050 R 013 B
NUT WITH FLANGE PART NO.	SF 050 R 013
DYNAMIC LOAD CAPACITY (LBS)	1,250
STATIV LOAD CAPACITY (LBS)	4,000
EFFICIENCY	40.5%
MATERIAL	BRONZE
NOMINAL DIAMETER "A"	1.12 IIN.
NUT LENGTH "B"	0.75 IN.
THREAD LENGTH "C"	0.050 IN.
THREAD SIZE	0.937-16 UN
FLANGE PART NO.	FL-0937
FLANGE DIAMETER "D"	2.60 IN.
FLANGE THICKNESS "E"	0.53 IN.
FLANGE HOLE DIAMETER "F"	0.266 IN.
NUMBER OF HOLES IN FLANGE "G"	4
FLANGE BOLT CIRCLE "H"	2.090 IN.
FLANGE MATERIAL	STEEL