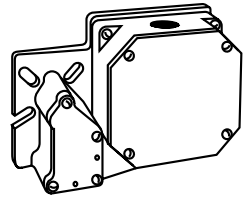
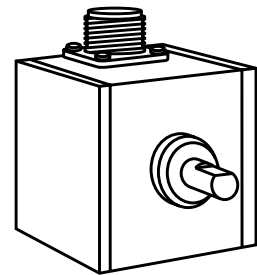


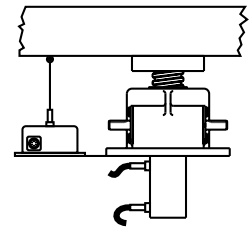
## SHAFT MOUNTED OPTIONS



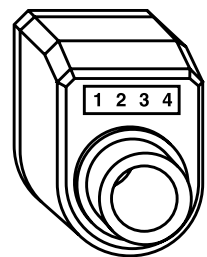
**Rotary Cam Limit Switches**  
See pages 174-175



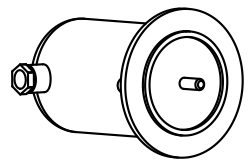
**Encoders**  
200 PPR Standard  
See page 178



**String Encoder and other Linear Displacement devices**  
Contact Joyce/Dayton  
**Proximity Switches**  
Contact Joyce/Dayton

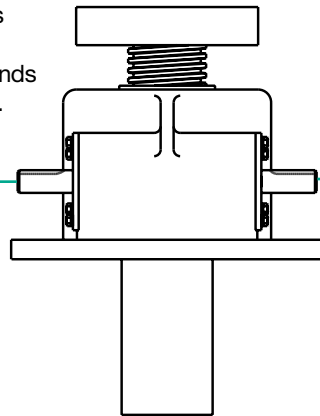


**Mechanical Counters**  
See page 177

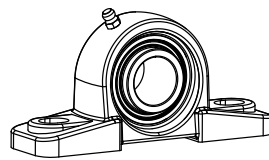


**Geared Potentiometer**  
0-10V or 4-20Ma  
See page 176

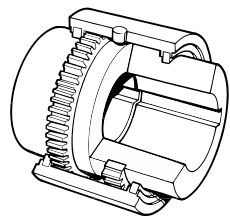
Joyce jacks and actuators are at the heart of linear motion systems in thousands of applications worldwide.



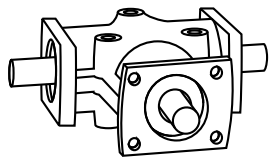
## ACCESSORIES



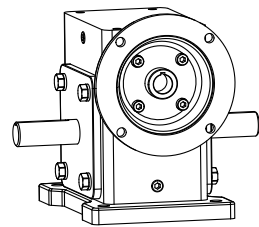
**Pillow Block and Flange Block Supports**  
See pages 186-187



**Shafts and Couplings**  
See pages 188-191



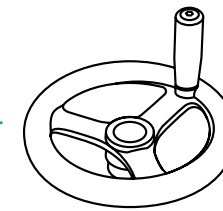
**Miter Gear Boxes**  
See pages 182-184



**Speed Reducers**  
Contact Joyce/Dayton

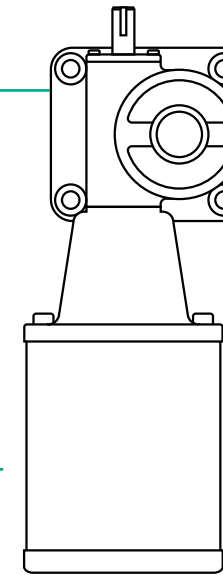
## DRIVE OPTIONS

**Hand Wheels**  
See page 177



**Specialty Motors**

- AC/DC
- Air
- IEC Frame
- Gear Motor
- International Voltages
- Single Phase
- Brake Motors

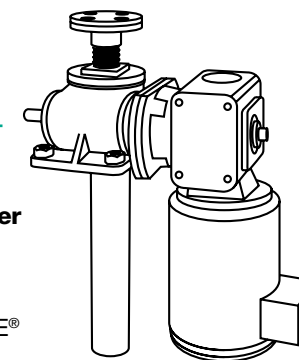


**Direct Drives**

- Stock AC Motor Mounts  
See page 185
- Special Adapters  
Contact Joyce/Dayton
- Ring Encoders  
Contact Joyce/Dayton

**ComDRIVE®**  
**Self-contained actuators combine jack, gear reducer and motor in a single compact unit.**

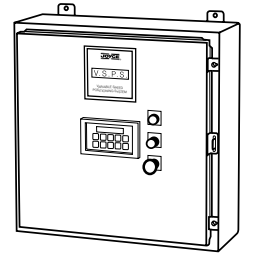
- Machine Screw ComDRIVE®  
See pages 45-57
- Ball Screw ComDRIVE®  
See pages 102-117
- Electric Cylinder ComDRIVE®  
See pages 118-134



## MOTOR CONTROLS

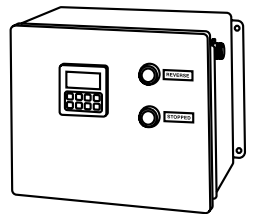
**Variable Speed Positioning System (VSPS)**

- 10 Programmable Preset positions  
See page 193



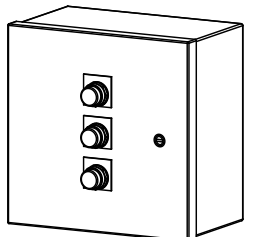
**Custom Controls include Synchronized Systems, Positioning Systems, and Leveling Systems**

- See the back cover of catalog



**Motor Starters**

- Momentary Contact Motor Starters  
See page 192



**Actuator Controls**

- 120 VAC - 120 VAC
- 120 VAC - 12 VDC
- 12 VDC - 12 VDC  
See page 194

