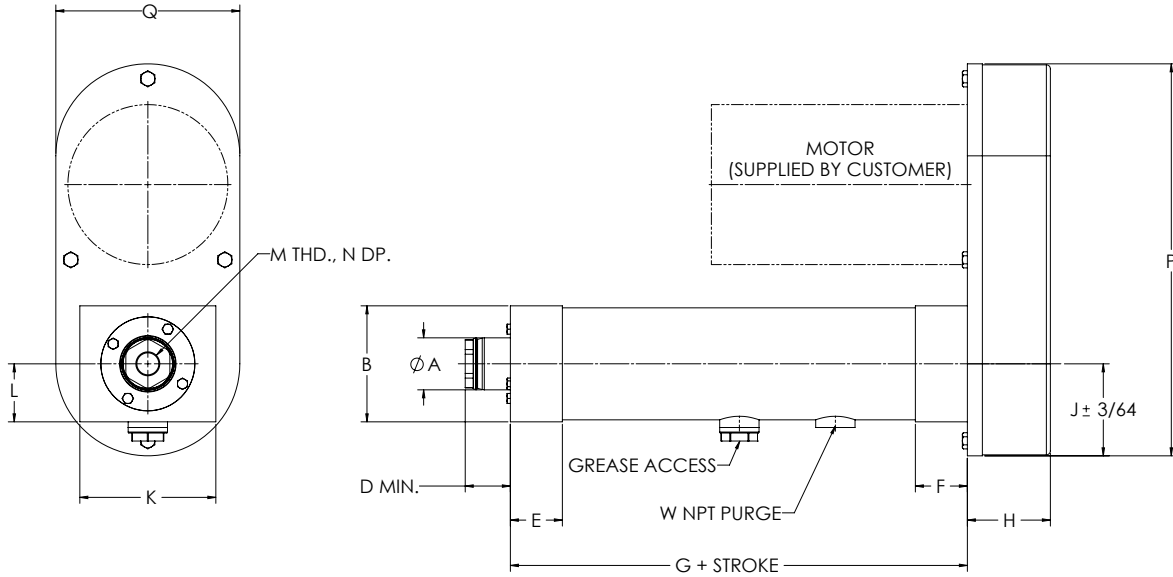


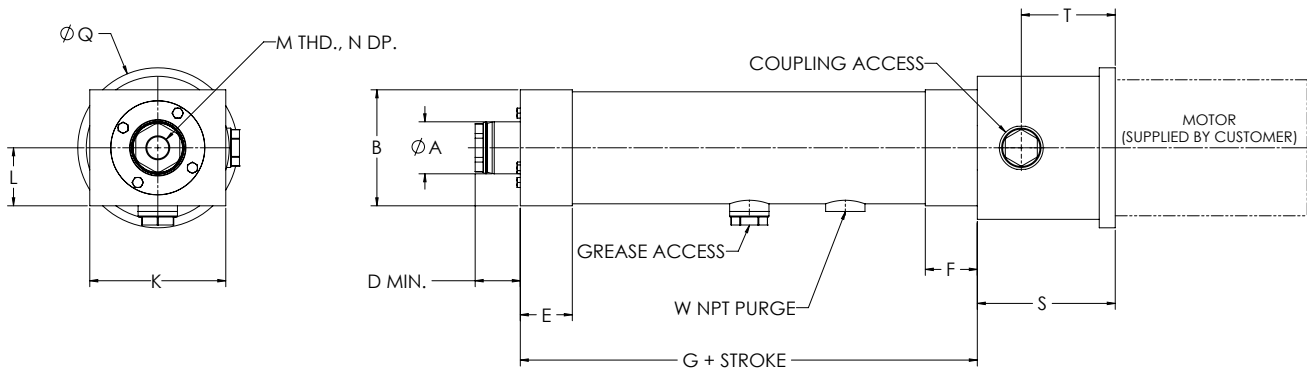
DIMENSIONED DRAWINGS FOR THE ELIMINATOR SP ACTUATOR

Dimensions are in inches and are subject to change without notice.

U-Parallel Offset Motor Configuration



L-Inline Motor Configuration



"S" length may vary depending on motor or gearbox.

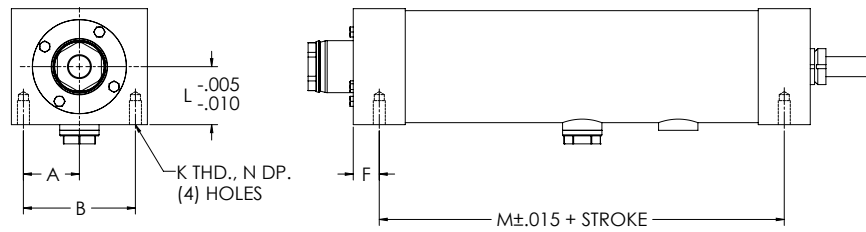
SP U-Parallel Offset and L-Inline Motor Configuration

Model	A	B	C	D	E	F	G	H	J	K	L	M	N	P	Q	S	W
SP201	1.13	2.28	3.00	1.04	1.00	1.00	5.63	1.88	2.25	4.50	1.14	1/2-20	1.00	8.50	4.50	2.94	1/8
SP302	1.63	3.63	4.25	1.41	1.63	1.63	8.28	2.59	3.20	5.75	1.81	3/4-16	1.00	12.25	5.75	4.31	1/8
SP304	1.63	3.63	4.25	1.56	1.63	1.63	8.28	2.59	3.20	5.75	1.81	3/4-16	1.00	12.25	5.75	4.31	1/8
SP404	2.25	4.38	5.50	1.88	2.00	2.00	9.59	2.72	3.50	7.19	2.19	3/4-16	1.00	10.96	7.19	5.25	1/4
SP406	2.25	4.38	5.50	1.79	2.00	2.00	9.59	2.72	3.50	7.19	2.19	3/4-16	1.00	10.96	7.19	5.25	1/4
SP508	3.00	5.63	7.75	2.56	2.50	3.00	13.38	4.50	4.61	9.00	3.88	1 1/4-12	1.63	17.25	9.00	6.75	3/8
SP516	3.00	5.63	7.75	2.56	2.50	3.00	13.38	4.50	4.61	9.00	3.88	1 1/4-12	1.63	17.25	9.00	6.75	3/8
SP618	3.50	6.13	8.50	2.75	3.00	3.00	14.00	4.68	5.84	11.00	3.06	1 1/4-12	1.63	19.50	11.00	7.25	1/2
SP625	Contact Joyce/Dayton																

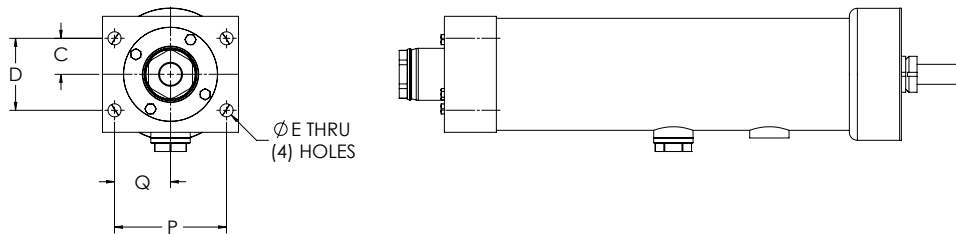
DIMENSIONED DRAWINGS FOR THE ELIMINATOR SP ACTUATOR

Dimensions are in inches and are subject to change without notice.

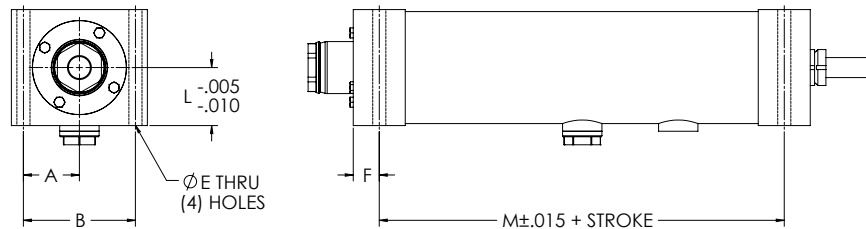
Bottom Mount Dimensions



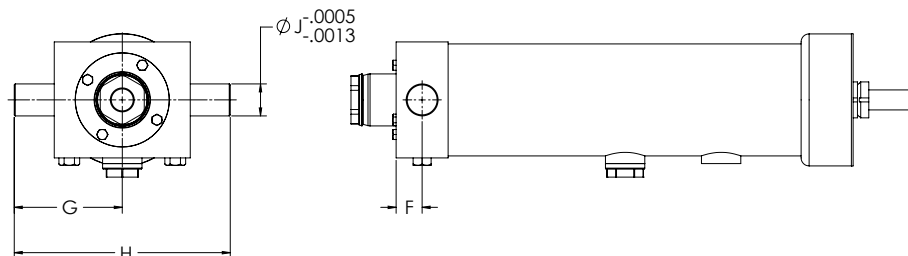
Front Flange Dimensions



Foot Mount Dimensions



Trunnion Mount Dimensions



SP Mounting Dimensions (Bottom Mount, Front Flange, Foot Mount, Trunnion Mount)

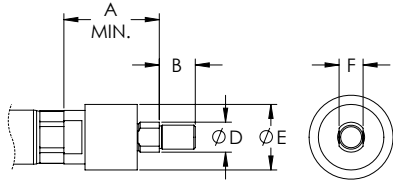
Model	A	B	C	D	E	F	G	H	J	K	L	M	N	P	Q
SP201	1.13	2.25	0.69	1.38	0.34	0.49	2.25	4.50	0.50	5/16-18	1.14	4.63	0.63	2.38	1.19
SP302	1.75	3.50	1.13	2.25	0.41	0.81	3.38	6.75	1.00	3/8-16	1.81	6.66	0.75	3.50	1.75
SP304	1.75	3.50	1.13	2.25	0.41	0.81	3.38	6.75	1.00	3/8-16	1.81	6.66	0.75	3.50	1.75
SP404	2.19	4.38	1.44	2.88	0.69	1.00	4.50	9.00	1.25	5/8-11	2.19	7.59	1.00	4.38	2.19
SP406	2.19	4.38	1.44	2.88	0.69	1.00	4.50	9.00	1.25	5/8-11	2.19	7.59	1.00	4.38	2.19
SP508	3.13	6.25	1.75	3.50	0.81	1.25	6.25	12.50	1.50	3/4-10	3.88	10.63	1.25	6.25	3.13
SP516	3.13	6.25	1.75	3.50	0.81	1.25	6.25	12.50	1.50	3/4-10	3.88	10.63	1.25	6.25	3.13
SP618	3.31	6.63	2.00	4.00	1.06	Contact Joyce/Dayton				1-8	3.06	11.00	1.63	6.63	3.31
SP625	Contact Joyce/Dayton														

DIMENSIONED DRAWINGS FOR THE ELIMINATOR SP ACTUATOR

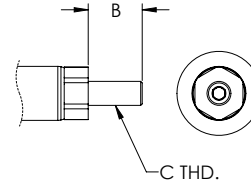
Dimensions are in inches and are subject to change without notice.

Rod End Options

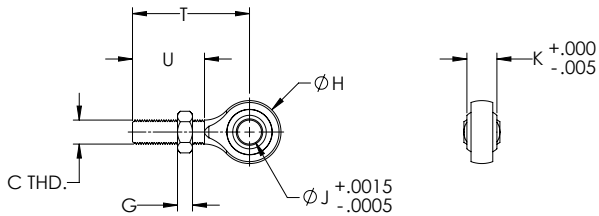
Self-Aligning Coupler



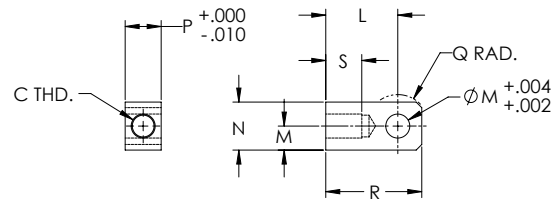
Male Thread



Spherical Rod Eye



Female Eye



SP Rod End Dimensions

Model	A	B	C	D	E	F	G	H	J	K	L	M	N	P	Q	R	S	T	U
SP201	2.00	0.75	1/2-20	0.63	1.37	0.50	0.31	1.31	0.50	0.63	1.50	0.50	1.00	0.75	0.63	2.00	0.75	2.44	1.50
SP302	2.38	1.13	3/4-16	0.97	1.75	0.88	0.42	1.75	0.75	0.88	2.06	0.75	1.50	1.25	0.88	2.81	1.13	2.88	1.75
SP304	2.38	1.13	3/4-16	0.97	1.75	0.88	0.42	1.75	0.75	0.88	2.06	0.75	1.50	1.25	0.88	2.81	1.13	2.88	1.75
SP404	2.38	1.13	3/4-16	0.97	1.75	0.88	0.42	1.75	0.75	0.88	2.06	0.75	1.50	1.25	0.88	2.81	1.13	2.88	1.75
SP406	2.38	1.13	3/4-16	0.97	1.75	0.88	0.42	1.75	0.75	0.88	2.06	0.75	1.50	1.25	0.88	2.81	1.13	2.88	1.75
SP508	2.94	1.63	1 1/4-12	1.38	2.50	1.25	0.72	2.75	1.00	1.38	3.44	1.38	2.75	2.00	1.56	4.81	2.00	4.13	2.13
SP516	2.94	1.63	1 1/4-12	1.38	2.50	1.25	0.72	2.75	1.00	1.38	3.44	1.38	2.75	2.00	1.56	4.81	2.00	4.13	2.13
SP618	2.94	1.63	1 1/4-12	1.38	2.50	1.25	0.72	2.75	1.00	1.38	3.44	1.38	2.75	2.00	1.56	4.81	2.00	4.13	2.13
SP625	Contact Joyce/Dayton																		