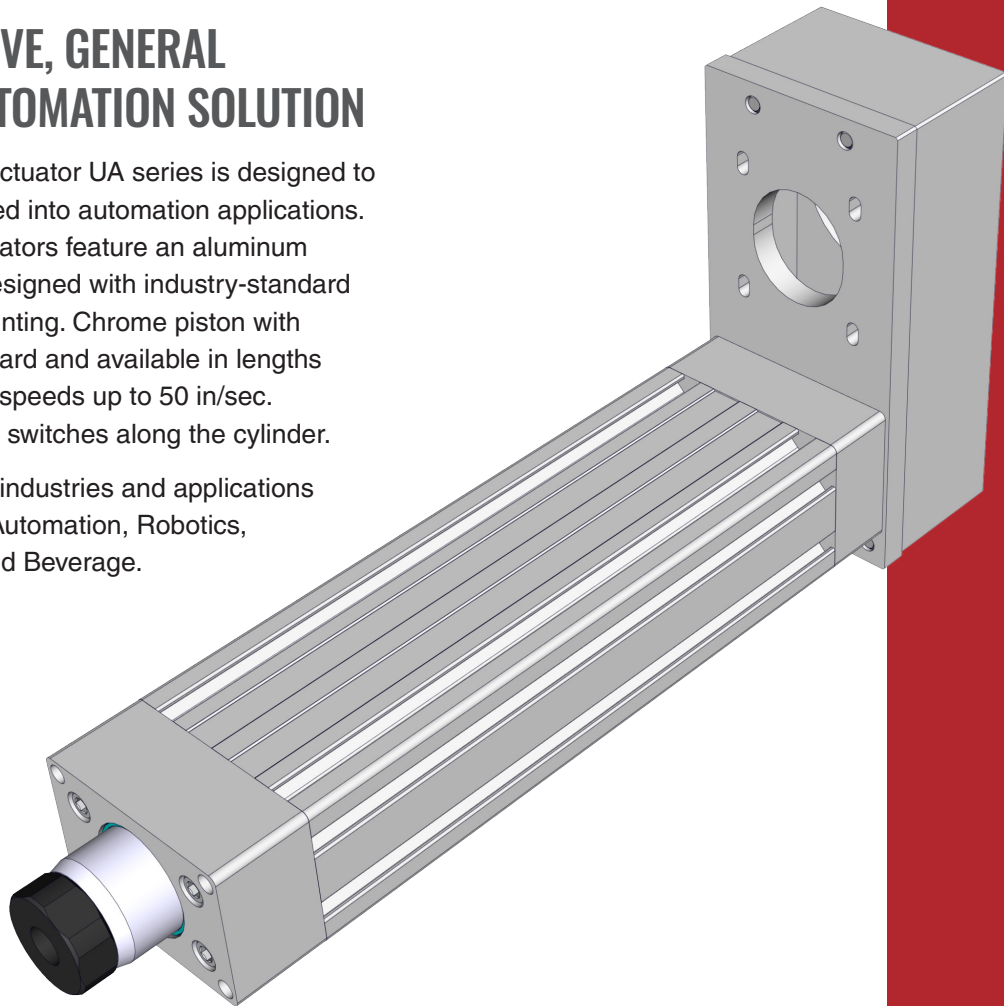


Universal Actuator UA™

COST EFFECTIVE, GENERAL PURPOSE AUTOMATION SOLUTION

EDrive's Universal Actuator UA series is designed to be easily incorporated into automation applications. These compact actuators feature an aluminum extrusion cylinder designed with industry-standard T-slots for quick mounting. Chrome piston with anti-rotation is standard and available in lengths up to 24 inches and speeds up to 50 in/sec. Quickly position limit switches along the cylinder.

Ideal for a variety of industries and applications including Industrial Automation, Robotics, Packaging, Food, and Beverage.



Key Features:

- Rated thrust up to 750 lbf
- Velocity up to 50 in/sec
- Designed with T-slot bracketing for quick mounting
- Sealed from contamination (IP54)
- Adjustable limit switches available
- Piston with internal anti-rotation
- Aluminum Belt Covers
- Small Motor Plate option for compact footprint

Ideal for a Variety of Applications Including:

- Gating/Sorting/Diverting
- Assembly, Pick & Place
- Aligning, Product Changeover
- Conveyors, Fillers
- Pneumatic Replacement
- And More

SPECIFICATION CHART FOR THE UNIVERSAL ACTUATOR UA

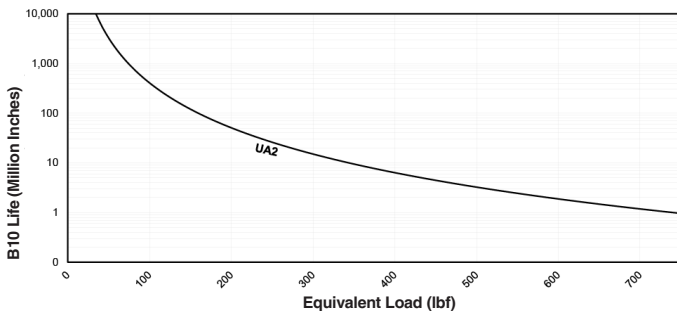
Model Number	Screw Code	Rated Thrust	Max. Velocity	Max. Stroke	Frame Size	Screw Lead	Backlash Max.	Max. Screw Speed	Max. Torque At Screw	Dynamic Capacity Per Million Revs	Dynamic Capacity Per Million Inches
		lb ^r	in/s	in	in	in	in	RPM	in-lb	lb ^r	lb ^r
UA2	AB2	750	50	24	2	0.5	0.010	6,000	66	1,070	850
UA2	AB5	750	16	24	2	0.2	0.010	4,800	27	1,410	825

Model Number	Max. Motor Or Gearhead Pilot Supported	Inertia 1:1 Zero Stroke	Inertia 1:1 Per Inch Of Stroke	Inertia 1:5:1 Zero Stroke	Inertia 1:5:1 Per Inch Of Stroke	Inertia 2:1 Zero Stroke	Inertia 2:1 Per Inch Of Stroke	Inertia Inline Zero Stroke	Inertia Inline Per Inch Of Stroke
	in	lb-in ²	lb-in ²	lb-in ²	lb-in ²	lb-in ²	lb-in ²	lb-in ²	lb-in ²
UA2	3.74	0.40	0.0016	0.10	0.0007	0.21	0.0004	0.13	0.0016
UA2	3.74	0.41	0.0031	0.10	0.0008	0.21	0.0008	0.13	0.0031

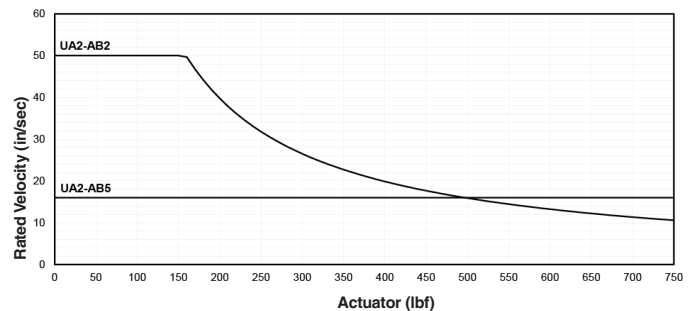
Model Number	Weight "SP" Zero Stroke	Weight "BP" Zero Stroke	Weight "L0" Zero Stroke	Weight Per Inch Of Stroke
	lb	lb	lb	lb
UA2	6.5	9.5	5.5	0.5
UA2	6.5	9.5	5.5	0.5

DATA CURVES FOR THE UNIVERSAL ACTUATOR UA

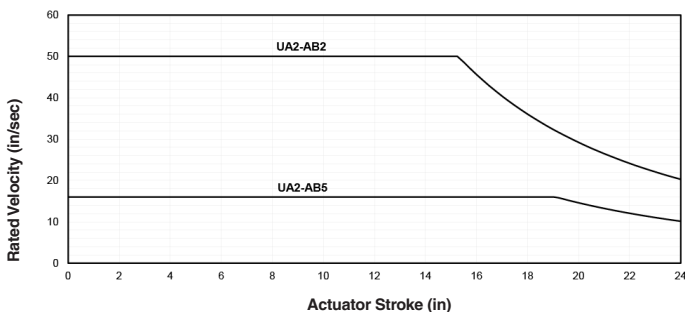
Dynamic Capacity: Life Vs. Load



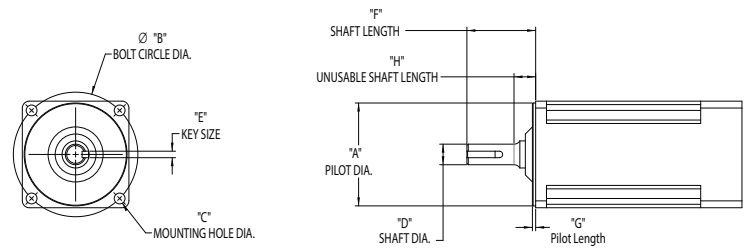
Force Vs. Speed



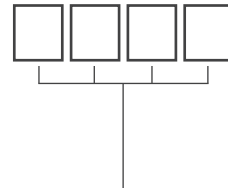
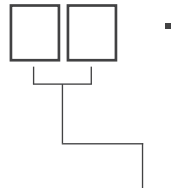
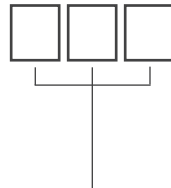
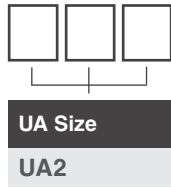
Speed Vs. Stroke



ORDERING GUIDE FOR THE UNIVERSAL ACTUATOR UA



Ordering Information



Motor Code
See Motor Codes Below

Screw Code	Dia.	Lead	Type	Lead Accuracy
AB2	1/2"	0.5"	Ball Screw	0.003 in/ft
AB5	5/8"	0.2"	Ball Screw	0.003 in/ft

Stroke
06 inch
12 inch
18 inch
24 inch

Motor Configuration
SP10 Small Plate 1:1
SP15 Small Plate 1.5:1
BP10 Big Plate 1:1
BP20 Big Plate 2:1
LL00 Inline Direct Coupled

MOTOR CODES

Motor Code	"A" Pilot Diameter	"B" Bolt Circle Diameter	"C" Mounting Hole Diameter		"D" Shaft Diameter (1)	"E" Key Size	"F" Shaft Length		"G" Pilot Length	"H" Unusable Shaft Length	Available Motor Configurations				
			Min	Max			Min	Max			Max	Max	SP10	SP15	BP10
GDH	1.500 in	2.625 in	0.169 in	0.228 in	1/4 in	N/A	0.781 in	0.844 in	0.20 in	0.20 in	<input checked="" type="checkbox"/>	<input checked="" type="checkbox"/>		<input checked="" type="checkbox"/>	<input checked="" type="checkbox"/>
PTD	1.500 in	2.625 in	0.169 in	0.228 in	1/2 in	1/8 in	1.25 in	1.625 in	0.20 in	0.20 in	<input checked="" type="checkbox"/>	<input checked="" type="checkbox"/>		<input checked="" type="checkbox"/>	<input checked="" type="checkbox"/>
DBC	2.875 in	3.875 in	0.209 in	0.248 in	1/2 in	1/8 in	1.188 in	1.575 in	0.20 in	0.375 in			<input checked="" type="checkbox"/>	<input checked="" type="checkbox"/>	<input checked="" type="checkbox"/>
PBD	2.875 in	3.875 in	0.209 in	0.248 in	1/2 in	5 mm	1.188 in	1.575 in	0.20 in	0.375 in			<input checked="" type="checkbox"/>	<input checked="" type="checkbox"/>	<input checked="" type="checkbox"/>
DCB	2.875 in	3.875 in	0.209 in	0.248 in	14 mm	5 mm	1.188 in	1.575 in	0.20 in	0.375 in			<input checked="" type="checkbox"/>	<input checked="" type="checkbox"/>	<input checked="" type="checkbox"/>
AGP	2.875 in	3.875 in	0.209 in	0.248 in	5/8 in	3/16 in	1.188 in	1.575 in	0.20 in	0.375 in			<input checked="" type="checkbox"/>	<input checked="" type="checkbox"/>	<input checked="" type="checkbox"/>
MPC	40 mm	63 mm	5.3 mm	6.3 mm	9 mm	3 mm	19 mm	31 mm	4 mm	4 mm	<input checked="" type="checkbox"/>	<input checked="" type="checkbox"/>		<input checked="" type="checkbox"/>	<input checked="" type="checkbox"/>
HCM	40 mm	63 mm	4.3 mm	5.3 mm	9 mm	3 mm	19 mm	31 mm	4 mm	4 mm	<input checked="" type="checkbox"/>	<input checked="" type="checkbox"/>		<input checked="" type="checkbox"/>	<input checked="" type="checkbox"/>
AMH	50 mm	70 mm	4.3 mm	6 mm	11 mm	4 mm	25 mm	31 mm	5 mm	5 mm	<input checked="" type="checkbox"/>	<input checked="" type="checkbox"/>		<input checked="" type="checkbox"/>	<input checked="" type="checkbox"/>
PCA	50 mm	70 mm	4.3 mm	6 mm	12 mm	4 mm	25 mm	31 mm	5 mm	5 mm	<input checked="" type="checkbox"/>	<input checked="" type="checkbox"/>		<input checked="" type="checkbox"/>	<input checked="" type="checkbox"/>
MCB	50 mm	70 mm	4.3 mm	6 mm	14 mm	5 mm	25 mm	31 mm	5 mm	5 mm	<input checked="" type="checkbox"/>	<input checked="" type="checkbox"/>		<input checked="" type="checkbox"/>	<input checked="" type="checkbox"/>
CAH	50 mm	70 mm	4.3 mm	6 mm	14 mm	5 mm	35 mm	41 mm	5 mm	5 mm	<input checked="" type="checkbox"/>	<input checked="" type="checkbox"/>		<input checked="" type="checkbox"/>	<input checked="" type="checkbox"/>
CMD	50 mm	70 mm	4.3 mm	6 mm	16 mm	5 mm	35 mm	41 mm	5 mm	5 mm	<input checked="" type="checkbox"/>	<input checked="" type="checkbox"/>		<input checked="" type="checkbox"/>	<input checked="" type="checkbox"/>
BDG	50 mm	95 mm	6.3 mm	7.3 mm	14 mm	5 mm	25 mm	31 mm	5 mm	5 mm			<input checked="" type="checkbox"/>	<input checked="" type="checkbox"/>	<input checked="" type="checkbox"/>
AHB	60 mm	75 mm	5.3 mm	6.5 mm	11 mm	4 mm	22 mm	31 mm	4 mm	4 mm	<input checked="" type="checkbox"/>	<input checked="" type="checkbox"/>		<input checked="" type="checkbox"/>	<input checked="" type="checkbox"/>
MBG	60 mm	75 mm	5.3 mm	6.5 mm	14 mm	5 mm	22 mm	31 mm	4 mm	4 mm	<input checked="" type="checkbox"/>	<input checked="" type="checkbox"/>		<input checked="" type="checkbox"/>	<input checked="" type="checkbox"/>
GCT	60 mm	68 mm	5.3 mm	6.5 mm	16 mm	5 mm	43 mm	49 mm	19 mm	21 mm					<input checked="" type="checkbox"/>
HPM	70 mm	90 mm	6.3 mm	7.2 mm	19 mm	6 mm	34 mm	41 mm	4 mm	4 mm	<input checked="" type="checkbox"/>				<input checked="" type="checkbox"/>
CGM	80 mm	100 mm	6.3 mm	7.3 mm	16 mm	5 mm	35 mm	41 mm	9 mm	15 mm			<input checked="" type="checkbox"/>	<input checked="" type="checkbox"/>	<input checked="" type="checkbox"/>
PBT	80 mm	100 mm	6.3 mm	7.3 mm	14 mm	5 mm	30 mm	37 mm	9 mm	15 mm			<input checked="" type="checkbox"/>	<input checked="" type="checkbox"/>	<input checked="" type="checkbox"/>
TMD	80 mm	100 mm	6.3 mm	7.3 mm	19 mm	6 mm	40 mm	46 mm	9 mm	10 mm			<input checked="" type="checkbox"/>		<input checked="" type="checkbox"/>
PGH	80 mm	100 mm	6.3 mm	7.3 mm	22 mm	6 mm	42 mm	48 mm	9 mm	15 mm			<input checked="" type="checkbox"/>		<input checked="" type="checkbox"/>
HGM	95 mm	115 mm	8.3 mm	10.3 mm	19 mm	6 mm	35 mm	41 mm	9 mm	15 mm			<input checked="" type="checkbox"/>		<input checked="" type="checkbox"/>
PTB	95 mm	115 mm	8.3 mm	10.3 mm	19 mm	6 mm	52 mm	58 mm	9 mm	15 mm					<input checked="" type="checkbox"/>
HPD	95 mm	115 mm	8.3 mm	10.3 mm	22mm	8 mm	39 mm	45 mm	9 mm	15 mm			<input checked="" type="checkbox"/>		<input checked="" type="checkbox"/>

(1) Max. Shaft for 2:1 & 1.5:1 is 16 mm (0.63 in) (2) Max. Shaft Length for SP & BP Mounting is 52 mm (2 in) (3) Max. Pilot Length for SP & BP Mounting is 9.5 mm (0.38 in)

ACCESSORIES

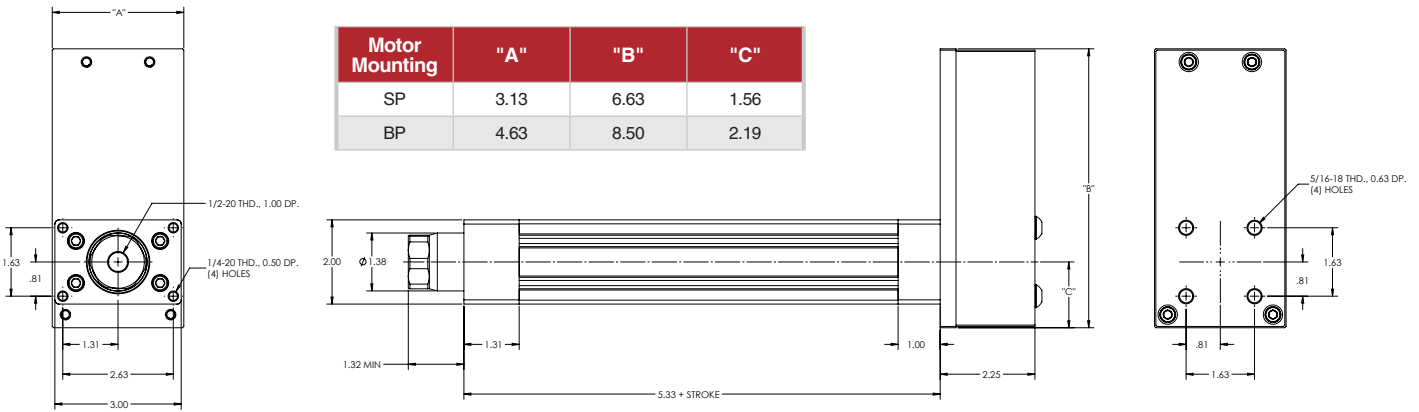
Part Number	Description	Part Number	Description	Part Number	Description
D06-UAS	Reed Switch NO	FM-UA2	Foot Mount Brackets (Pair)	SRE-UA2	Spherical Rod Eye
T06-UAS	Reed Switch NC	FF-UA2	Front Flange Plate	MTE-UA2	Male Thread End
G06-UAS	Sinking Switch NO (NPN)	TB-UA2	Trunnion Brackets (Pair)	FRE-UA2	Female Eye
J06-UAS	Sinking Switch NC (NPN)	CB-UA2	Clevis Bracket	SAC-UA2	Self Aligning Coupler
K06-UAS	Sourcing Switch NO (PNP)	EB-UA2	Eye Bracket	CRE-UA2	Clevis Rod End
Q06-UAS	Sourcing Switch NC (PNP)	CP-UA2	Clevis Pin	1/4-UAN	1/4-20 T-Nut

Accessories sold separately

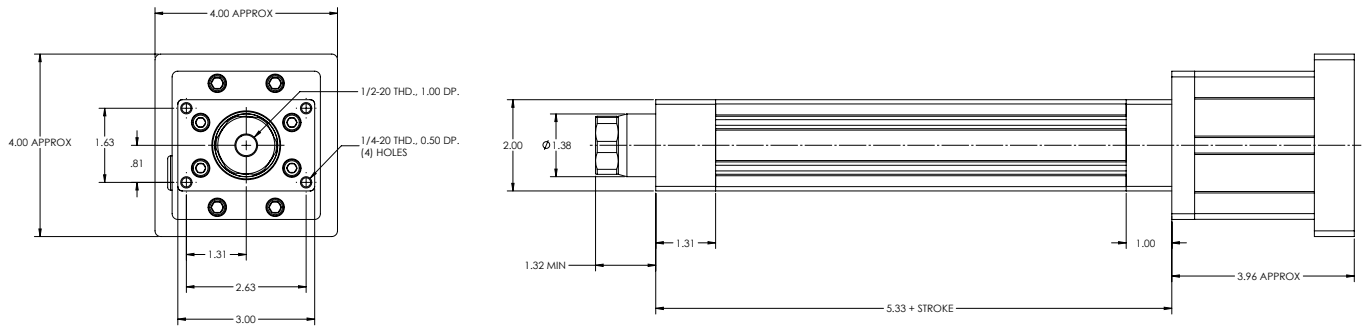
DIMENSIONED DRAWINGS FOR THE UNIVERSAL ACTUATOR UA

Dimensions are in inches and are subject to change without notice.

Parallel Offset Configuration

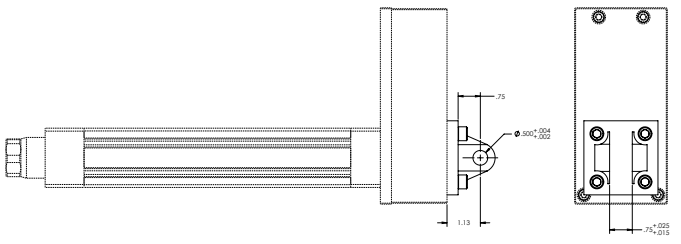


Inline Configuration

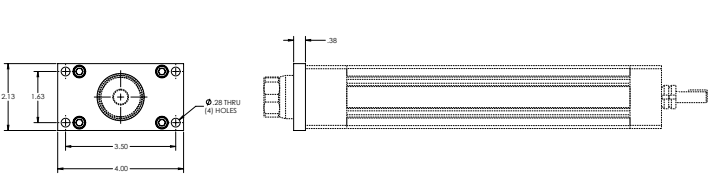


UA Mounting Accessories

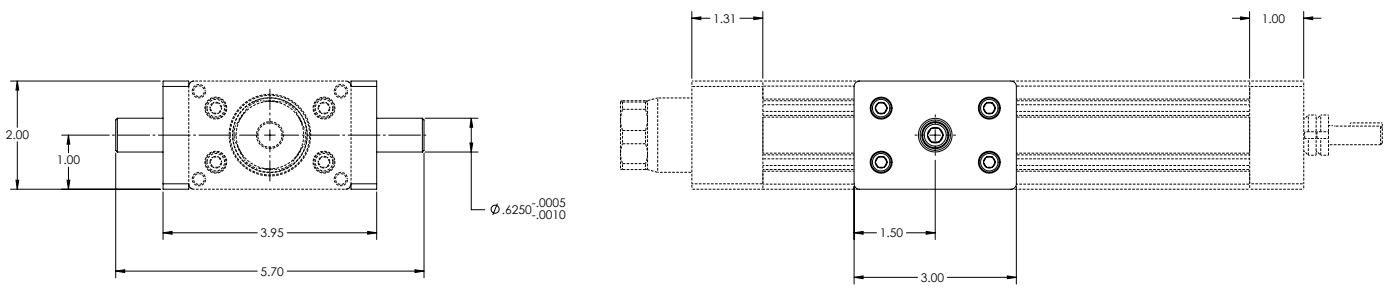
Rear Clevis



Front Flange



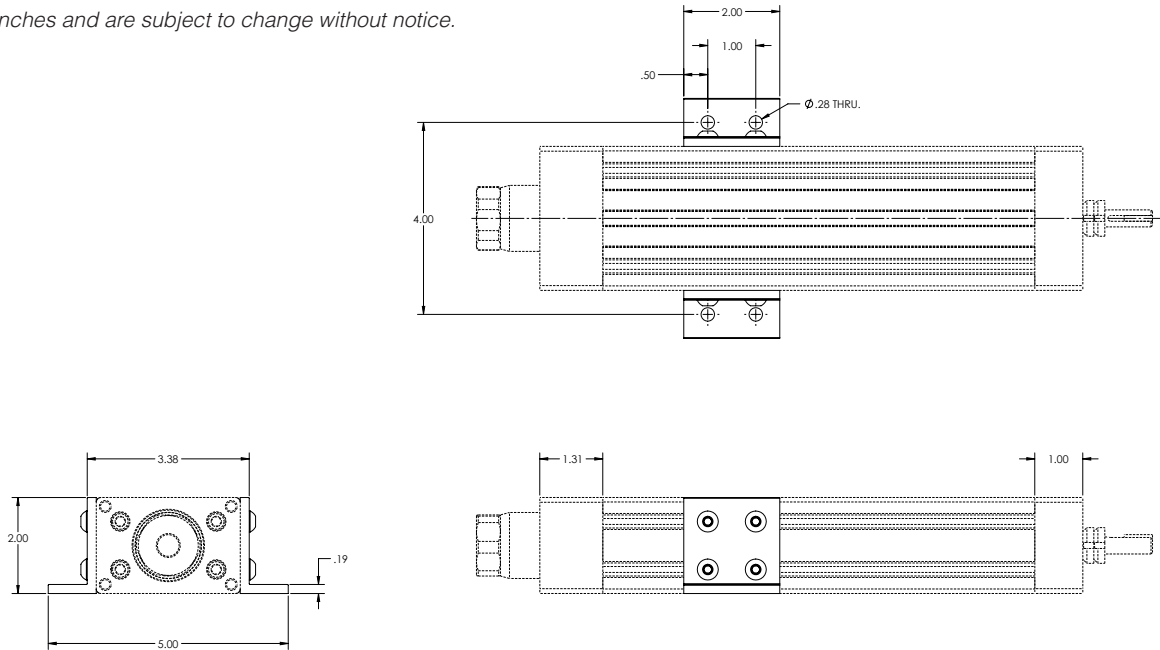
Trunnion Brackets



DIMENSIONED DRAWINGS FOR THE UNIVERSAL ACTUATOR UA

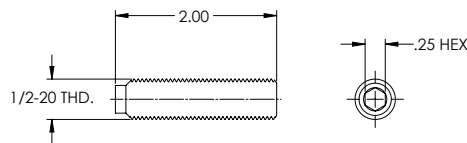
Dimensions are in inches and are subject to change without notice.

Foot Mount

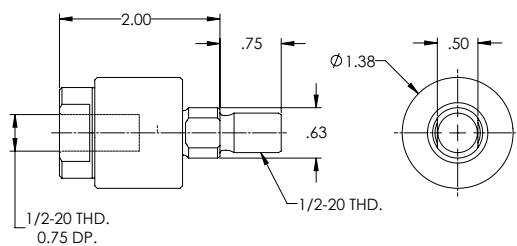


Rod End Accessories

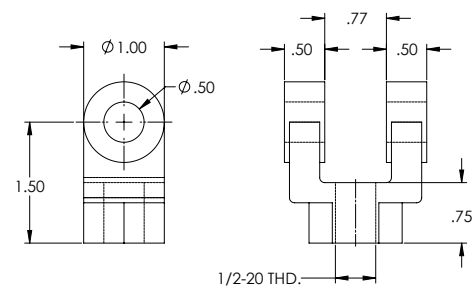
Male Thread



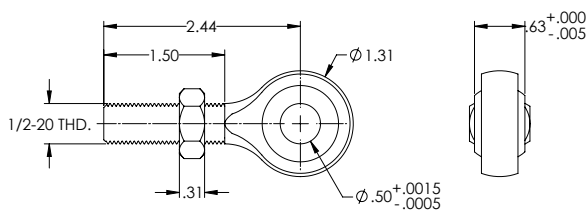
Self-Aligning Coupler *Includes Male Thread*



Clevis Rod End *Includes Male Thread and Jam Nut*



Spherical Rod Eye



Female Eye *Includes Male Thread and Jam Nut*

