

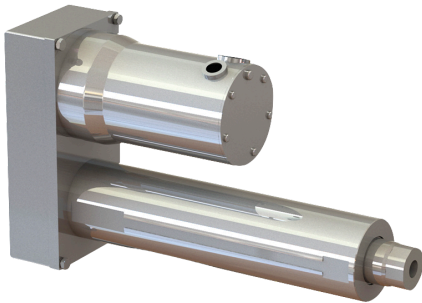


Why EDrive?

Joyce/Dayton's EDrive Actuators pioneered the first electric linear actuator in 1980 and continues to manufacture a full line of linear actuators specifically developed to provide top quality solutions for demanding industrial applications.

Products

- ✓ High speed, high duty cycle actuators with capacities up to 100,000 lbs.
- ✓ Designed to meet your motor/gearbox mounting requirements
- ✓ Optional internal load cells with bi-directional feedback
- ✓ Inline and Parallel Offset mounting configurations available
- ✓ Quality products at competitive prices
- ✓ Standard products routinely customized to meet your requirements



Tac Series

- Capacities up to 2,000 lbs.
- Aluminum or 316 Stainless Steel
- Std. stroke lengths up to 60"
- Travel speeds up to 40"/sec



Eliminator Series

- Capacities up to 100,000 lbs.
- Steel or 316 Stainless Steel
- Std. stroke lengths up to 48"
- Travel speeds up to 65"/sec
- Internal Load Cell Option

Service

- ✓ All calls are answered by a receptionist for fast and friendly service
- ✓ Dedicated regional sales managers are ready to serve you
- ✓ Experienced applications engineers are available to provide technical assistance
- ✓ Knowledgeable field sales reps are available to provide local support
- ✓ 2D/3D downloadable drawings, manuals, and catalogs are available online

Contact us with your requirements today!
937-294-6261 | sales@joycedayton.com

937-294-6261

JOYCEDAYTON.COM