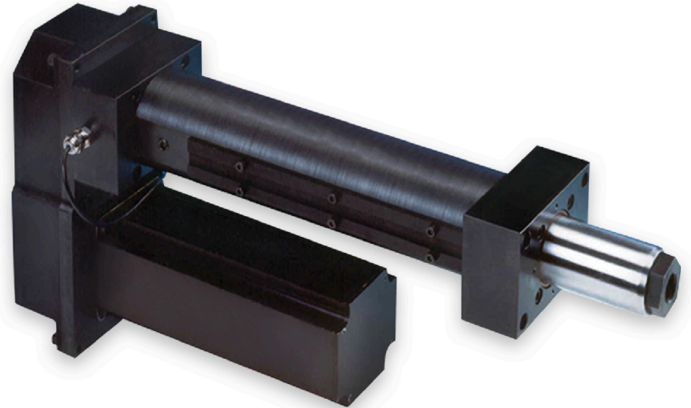




## Actuators with Internal Load Cells Bi-Directional Force Feedback

Joyce/Dayton manufacturers EDrive actuators with Internal Load Cells that deliver bi-directional force feedback for loads from 1,000 to 100,000 lbs., providing an economical force measurement solution for precise applications.

This design is a standard option for Eliminator Series actuators allowing the continuous measurement of loads in both directions.



Joyce/Dayton's proprietary design inherently provides protection for the load cell while delivering a continuous mV/V output signal. Since the device is internal, no special field installation is required making integration into your system simple.

As an experienced manufacturer of robust linear motion equipment, EDrive has earned customer confidence through many years of proven product operation in demanding industrial applications.

### Internal Load Cells

- ✓ Measure force in both directions from 1,000 to 100,000 lbs.
- ✓ Provide a continuous mV/V output signal
- ✓ Are accurate to within 0.5% of rated force
- ✓ Are available in both Inline and Parallel Offset mounting configurations
- ✓ Are featured in product drawings and models, which are available online

*Internal Load Cells are available on Eliminator Series Actuators including 316 Stainless Steel Eliminator Actuators.*

**Contact us with your requirements today!**  
937-294-6261 | [sales@joycedayton.com](mailto:sales@joycedayton.com)

**937-294-6261**

**JOYCEDAYTON.COM**

© 2026 Joyce/Dayton Corp. - FB6401