

SCREWS AND NUTS

Machine Screws & Nuts



www.joycedayton.com

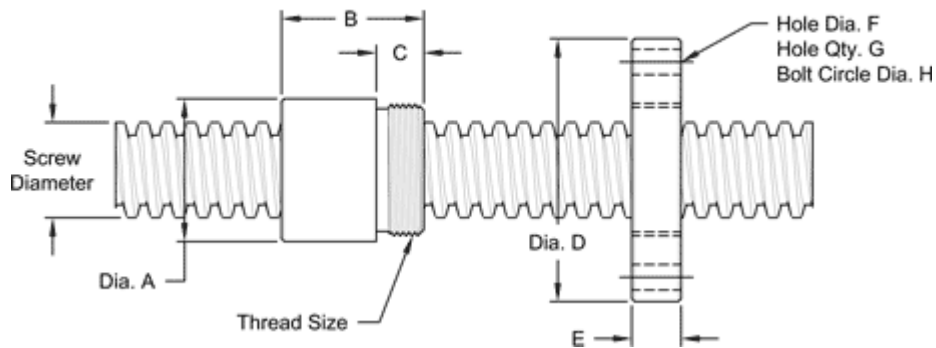


1/2 - 8 STUB ACME MACHINE SCREW

Available in stainless steel with a corresponding aluminum bronze nut.
Right hand threads are available.

MACHINE SCREW SPECIFICATIONS	RH
STAINLESS STEEL SCREW PART NO.	SS 050 R 013 S
THREAD FORM	STUB ACME
SCREW DIAMETER TURNS / INCH	1/2 - 8
PITCH / LEAD	0.125 IN.
ROOT DIAMETER	0.38 IN.
SCREW WEIGHT (LB. / FT.)	0.53
TORQUE TO RAISE 1 POUND	0.050 IN - LB
MAXIMUM SCREW LENGTH	12 FEET

NUT AND FLANGE SPECIFICATIONS



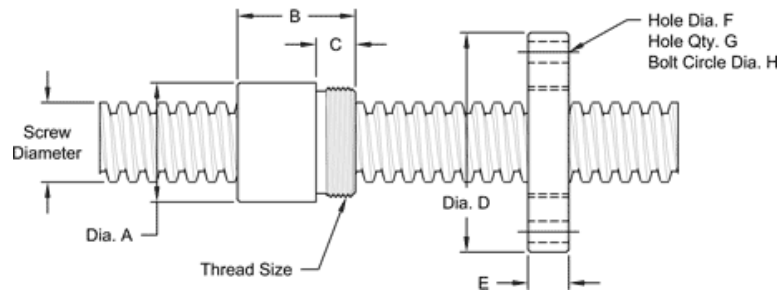
NUT SPECIFICATIONS	RH
NUT PART NO.	SN 050 R 013 B
NUT WITH FLANGE PART NO.	SF 050 R 013
DYNAMIC LOAD CAPACITY (LBS)	1,250
STATIC LOAD CAPACITY (LBS)	4,000
EFFICIENCY	40.5%
MATERIAL	BRONZE
NOMINAL DIAMETER "A"	1.12 IN.
NUT LENGTH "B"	0.75 IN.
THREAD LENGTH "C"	0.50 IN.
THREAD SIZE	0.93716 UN
FLANGE PART NO.	FL0937
FLANGE DIAMETER "D"	2.60 IN.
FLANGE THICKNESS "E"	0.53 IN.
FLANGE HOLE DIAMETER "F"	0.266 IN.
NUMBER OF HOLES IN FLANGE "G"	4
FLANGE BOLT CIRCLE "H"	2.090 IN.
FLANGE MATERIAL	STEEL

5/8 - 8 STUB ACME MACHINE SCREW

Available in stainless steel with a corresponding aluminum bronze nut.
Choose from RH threads or LH threads.

MACHINE SCREW SPECIFICATIONS	RH	LH
STAINLESS STEEL SCREW PART NO.	SS 063 R 013 S	SS 063 L 013 S
THREAD FORM	STUB ACME	
SCREW DIAMETER - TURNS / INCH	5/8 - 8	
PITCH / LEAD	0.125 IN.	
ROOT DIAMETER	0.507 IN.	
SCREW WEIGHT (LB. /FT.)	0.85	
TORQUE TO RAISE 1 POUND	0.058 IN.LB.	
MAXIMUM SCREW LENGTH	12 FEET	

NUT AND FLANGE SPECIFICATIONS



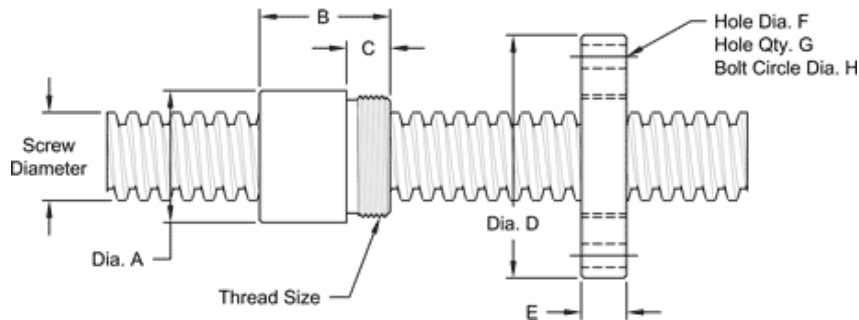
NUT SPECIFICATIONS	RH	LH
NUT PART NO.	SN 063 R 013 B	SN 063 L 013 B
FLANGED NUT PART NO	SF 063 R 013	SF 063 L 013
DYNAMIC LOAD CAPACITY (LBS)	1,953	
STATIC LOAD CAPACITY (LBS)	6,250	
EFFICIENCY	35.0 %	
MATERIAL	BRONZE	
NOMINAL DIAMETER "A"	1.12 IN.	
NUT LENGTH "B"	1.00 IN.	
THREAD LENGTH "C"	0.50 IN.	
THREAD SIZE	0.93716 UN	
FLANGE PART NO.	FL0937	
FLANGE DIAMETER "D"	2.60 IN.	
FLANGE THICKNESS "E"	0.53 IN.	
FLANGE HOLE DIAMETER "F"	0.266 IN.	
NUMBER OF HOLES IN FLANGE "G"	4	
FLANGE BOLT CIRCLE "H"	2.090 IN.	
FLANGE MATERIAL	BLACK OXIDE COATED STEEL	

5/8 - 4 DOUBLE LEAD STUB ACME MACHINE SCREW

Available in stainless steel with a corresponding aluminum bronze nut.
Both right hand and left hand threads are available.

MACHINE SCREW SPECIFICATIONS	RH	LH
STAINLESS STEEL SCREW PART NO.	SS 063 R 025 S	SS 063 L 025 S
THREAD FORM	STUB ACME	
SCREW DIAMETER TURNS / INCH	5/8 - 4	
PITCH / LEAD	0.125 IN./0.250 IN.	
ROOT DIAMETER	0.515 IN.	
SCREW WEIGHT (LB. / FT.)	0.85	
TORQUE TO RAISE 1 POUND	0.079 IN.- LB.	
MAXIMUM SCREW LENGTH	12 FEET	

NUT AND FLANGE SPECIFICATIONS



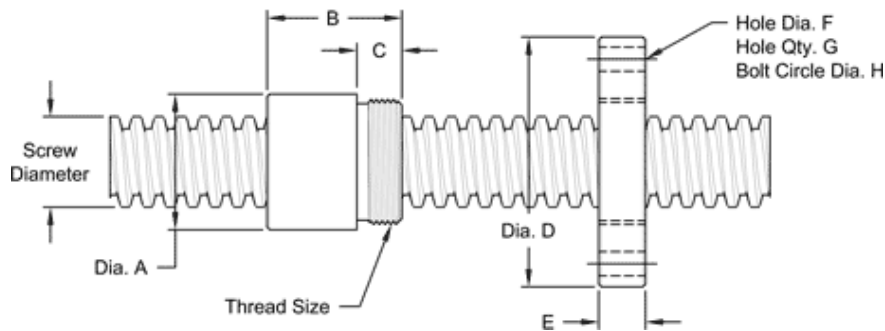
NUT SPECIFICATIONS	RH	LH
NUT PART NO.	SN 063 R 025 B	SN 063 L 025 B
NUT WITH FLANGE PART NO.	SF 063 R 025	SF 063 L 025
DYNAMIC LOAD CAPACITY (LBS.)	1,953	
STATIC LOAD CAPACITY (LBS.)	6,250	
EFFICIENCY	51.4%	
MATERIAL	BRONZE	
NOMINAL DIAMETER "A"	1.12 IN.	
NUT LENGTH "B"	1.00 IN.	
THREAD LENGTH "C"	0.50 IN.	
THREAD SIZE	0.93716 UN	
FLANGE PART NO.	FL0937	
FLANGE DIAMETER "D"	2.60 IN.	
FLANGE THICKNESS "E"	0.53 IN.	
FLANGE HOLE DIAMETER "F"	0.266 IN.	
NUMBER OF HOLES IN FLANGE "G"	4	
FLANGE BOLT CIRCLE "H"	2.090 IN.	
FLANGE MATERIAL	BLACK OXIDE COATED STEEL	

5/8 - 2 DOUBLE LEAD STUB ACME MACHINE SCREW

Available in alloy steel with a corresponding aluminum bronze nut.
Right hand threads are available.

MACHINE SCREW SPECIFICATIONS	RH
ALLOY STEEL SCREW PART NO.	SS 063 R 050 A
THREAD FORM	STUB ACME
SCREW DIAMETER (TURNS / INCH)	5/8 - 2
PITCH / LEAD	0.250 IN./ 0.500 IN.
ROOT DIAMETER	0.426 IN.
SCREW WEIGHT (LB./FT.)	0.85
TORQUE TO RAISE 1 POUND	0.120 IN.- LB..
MAXIMUM SCREW LENGTH	12 FEET

NUT AND FLANGE SPECIFICATIONS



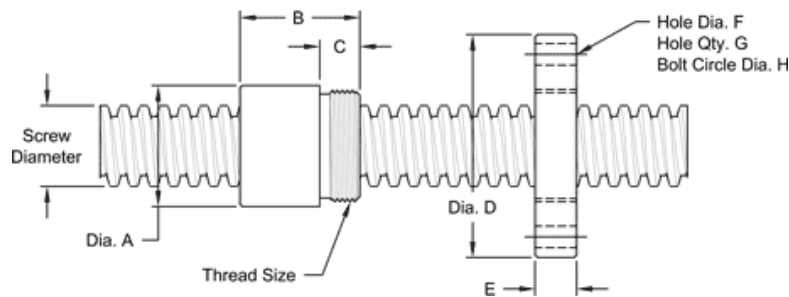
NUT SPECIFICATIONS	RH
NUT PART NO.	SN 063 R 050 B
NUT WITH FLANGE PART NO.	SF 063 R 050
DYNAMIC CAPACITY (LBS.)	1,953
STATIC CAPACITY (LBS.)	6,250
EFFICIENCY	67.6%
MATERIAL	BRONZE
NOMINAL DIAMETER "A"	1.12 IN.
NUT LENGTH "B"	1.00 IN.
THREAD LENGTH "C"	0.50 IN.
THREAD SIZE	0.93716 UN
FLANGE PART NO.	FL0937
FLANGE DIAMETER "D"	2.60 IN.
FLANGE THICKNESS "E"	0.53 IN.
FLANGE HOLE DIAMETER "F"	0.266 IN.
NUMBER OF HOLES IN FLANGE "G"	4
FLANGE BOLT CIRCLE "H"	2.090 IN.
FLANGE MATERIAL	BLACK OXIDE COATED STEEL

3/4 - 5 SINGLE LEAD ACME MACHINE SCREW

Available in alloy steel with a corresponding aluminum bronze nut.
Right hand and left hand threads are available.

MACHINE SCREW JACK SPECIFICATIONS	RH	LH
ALLOY STEEL SCREW PART NO.	AS 075 R 020 A	AS 075 L 020 A
THREAD FORM	ACME	
SCREW DIAMETER (TURNS / INCH)	3/45	
PITCH / LEAD	0.200 IN.	
ROOT DIAMETER	0.502 IN.	
SCREW WEIGHT (LB. / FT.)	1.2	
TORQUE TO RAISE 1 POUND	0.075 IN.- LB.	
MAXIMUM SCREW LENGTH	12 FEET	

NUT AND FLANGE SPECIFICATIONS



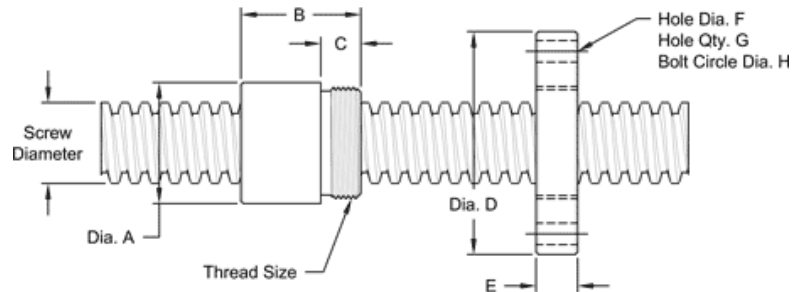
NUT SPECIFICATIONS	RH	LH
NUT PART NO.	AN 075 R 020 B	AN 075 L 020 B
NUT WITH FLANGE PART NO.	AF 075 R 020	AF 075 L 020
DYNAMIC LOAD CAPACITY (LBS.)	2,812	
STATIC LOAD CAPACITY (LBS.)	9,000	
EFFICIENCY	43.6%	
MATERIAL	BRONZE	
NOMINAL DIAMETER "A"	1.12 IN.	
NUT LENGTH "B"	1.25 IN.	
THREAD LENGTH "C"	0.50 IN.	
THREAD SIZE	1.000 18 UN	
FLANGE PART NO.	FL1000	
FLANGE DIAMETER "D"	2.63 IN.	
FLANGE THICKNESS "E"	0.53 IN.	
FLANGE HOLE DIAMETER "F"	0.266 IN.	
NUMBER OF HOLES IN FLANGE "G"	4	
FLANGE BOLT CIRCLE "H"	2.090 IN.	
FLANGE MATERIAL	BLACK OXIDE COATED STEEL	

7/8 - 2 DOUBLE LEAD ACME MACHINE SCREW

Available in both alloy steel and stainless steel with a corresponding aluminum bronze nut. Right hand and left hand threads are available.

MACHINE SCREW JACK SPECIFICATIONS	RH	LH
ALLOY STEEL SCREW PART NO.	AS 075 R 020 A	AS 075 L 020 A
THREAD FORM	ACME	
SCREW DIAMETER (TURNS / INCH)	3/45	
PITCH / LEAD	0.200 IN.	
ROOT DIAMETER	0.502 IN.	
SCREW WEIGHT (LB. / FT.)	1.2	
TORQUE TO RAISE 1 POUND	0.075 IN.- LB.	
MAXIMUM SCREW LENGTH	12 FEET	

NUT AND FLANGE SPECIFICATIONS



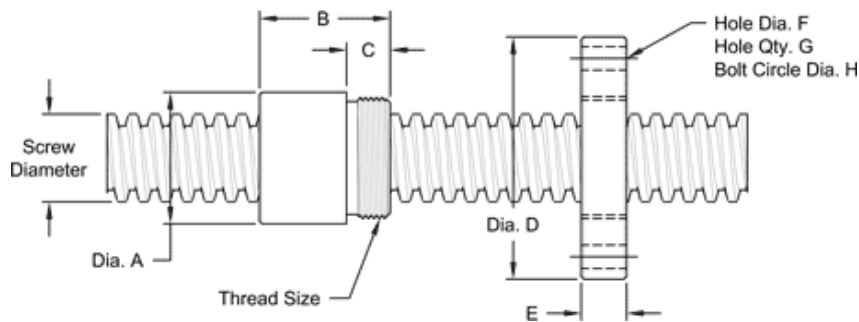
NUT SPECIFICATIONS	RH	LH
NUT PART NO.	AN 075 R 020 B	AN 075 L 020 B
NUT WITH FLANGE PART NO.	AF 075 R 020	AF 075 L 020
DYNAMIC LOAD CAPACITY (LBS.)	2,812	
STATIC LOAD CAPACITY (LBS.)	9,000	
EFFICIENCY	43.6%	
MATERIAL	BRONZE	
NOMINAL DIAMETER "A"	1.12 IN.	
NUT LENGTH "B"	1.25 IN.	
THREAD LENGTH "C"	0.50 IN.	
THREAD SIZE	1.000 18 UN	
FLANGE PART NO.	FL1000	
FLANGE DIAMETER "D"	2.63 IN.	
FLANGE THICKNESS "E"	0.53 IN.	
FLANGE HOLE DIAMETER "F"	0.266 IN.	
NUMBER OF HOLES IN FLANGE "G"	4	
FLANGE BOLT CIRCLE "H"	2.090 IN.	
FLANGE MATERIAL	BLACK OXIDE COATED STEEL	

1" - 10 SINGLE LEAD ACME MACHINE SCREW

Available in both alloy steel and stainless steel with a corresponding aluminum bronze nut.
Right hand and left hand threads are available.

MACHINE SCREW SPECIFICATIONS	RH	LH
ALLOY STEEL SCREW PART NO.	AS 100 R 010 A	AS 100 L 010 A
STAINLESS STEEL SCREW PART NO.	AS 100 R 010 S	AS 100 L 010 S
THREAD FORM	ACME	
SCREW DIAMETER - TURNS / INCH	110	
PITCH / LEAD	0.100 IN.	
ROOT DIAMETER	0.857 IN.	
SCREW WEIGHT (LB./FT)	2.1	
TORQUE TO RAISE 1 POUND	0.078 IN.LB.	
MAXIMUM SCREW LENGTH	12 FEET	

NUT AND FLANGE SPECIFICATIONS



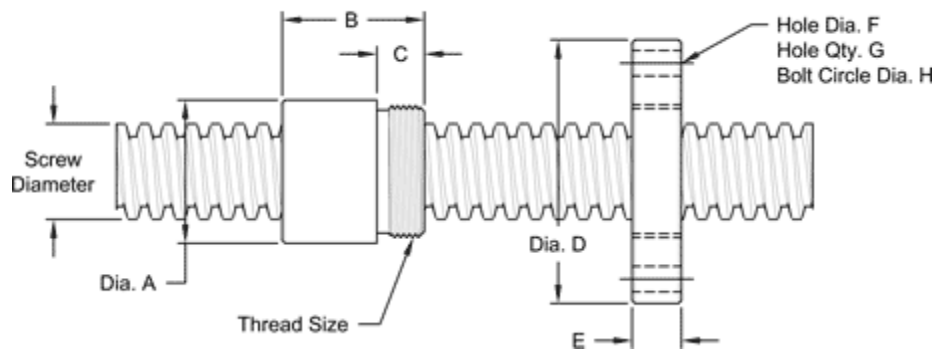
NUT SPECIFICATIONS	RH	LH
NUT PART NO.	AN 100 R 010 B	AN 100 L 010 B
NUT WITH FLANGE PART NO.	AF100 R 010	AF 100 L 010
DYNAMIC LOAD CAPACITY (LBS.)	5,000	
STATIC LOAD CAPACITY (LBS.)	16,000	
EFFICIENCY	21.2%	
MATERIAL	BRONZE	
NOMINAL DIAMETER "A"	1.50 IN.	
NUT LENGTH "B"	1.50 IN.	
THREAD LENGTH "C"	0.50 IN.	
THREAD SIZE	1.37516 UN	
FLANGE PART NO.	FL1375	
FLANGE DIAMETER "D"	2.75 IN.	
FLANGE THICKNESS "E"	0.52 IN.	
FLANGE HOLE DIAMETER "F"	0.266 IN.	
NUMBER OF HOLES IN FLANGE "G"	4	
FLANGE BOLT CIRCLE "H"	2.260 IN.	
FLANGE MATERIAL	BLACK OXIDE COATED STEEL	

1" - 4 SINGLE LEAD ACME MACHINE SCREW

Available in both alloy steel and stainless steel with a corresponding aluminum bronze nut. Right hand and left hand threads are available.

MACHINE SCREW SPECIFICATIONS	RH	LH
ALLOY STEEL SCREW NO.	AS 100 R 025 A	AS 100 L 025 A
STAINLESS STEEL SCREW NO.	AS 100 R 025 S	A S100 L 025 S
THREAD FORM	ACME	
SCREW DIAMETER - TURNS / INCH	14	
PITCH / LEAD	0.250 IN.	
ROOT DIAMETER	0.699 IN.	
SCREW WEIGHT (LB./FT.)	2.2	
TORQUE TO RAISE 1 POUND	0.097 IN.LB.	
MAXIMUM SCREW LENGTH	12 FEET	

NUT AND FLANGE SPECIFICATIONS



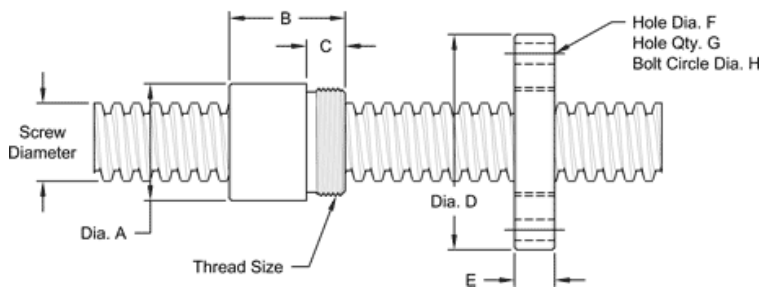
NUT SPECIFICATIONS	RH	LH
NUT PART NO.	AN 100 R 025 B	AN 100 L 025 B
NUT WITH FLANGE PART NO.	AF 100 R 025	AF 100 L 025
DYNAMIC LOAD CAPACITY (LBS.)	5,000	
STATIC LOAD CAPACITY (LBS.)	16,000	
EFFICIENCY	41.9%	
MATERIAL	BRONZE	
NOMINAL DIAMETER "A"	1.50 IN.	
NUT LENGTH "B"	1.50 IN.	
THREAD LENGTH "C"	0.50 IN.	
THREAD SIZE	1.37516 UN	
FLANGE PART NUMBER	FL1375	
FLANGE DIAMETER "D"	2.75 IN.	
FLANGE THICKNESS "E"	0.52 IN.	
FLANGE HOLE DIAMETER "F"	0.266 IN.	
NUMBER OF HOLES IN FLANGE "G"	4	
FLANGE BOLT CIRCLE "H"	2.260 IN.	
FLANGE MATERIAL	BLACK OXIDE COATED STEEL	

1" - 2 DOUBLE LEAD ACME MACHINE SCREW

Available in both alloy steel and stainless steel with a corresponding aluminum bronze nut. Right hand and left hand threads are available.

MACHINE SCREW SPECIFICATIONS	RH	LH
ALLOY STEEL SCREW PART NO.	AS 100 R 050 A	AS 100 L 050 A
STAINLESS STEEL SCREW PART NO.	AS 100 R 050 S	AS 100 L 050 S
THHREAD FORM	ACME	
SCREW DIAMETER - TURNS / INCH	1"2	
PITCH / LEAD	0.250 IN. /0.500 IN.	
ROOT DIAMETER	0.699 IN.	
SCREW WEIGHT ((LB./FT.)	2.2	
TORQUE TO RAISE 1 POUND	0.140 IN. LB.	
MAXIMUM SCREW LENGTH	12 FEET	

NUT AND FLANGE SPECIFICATIONS



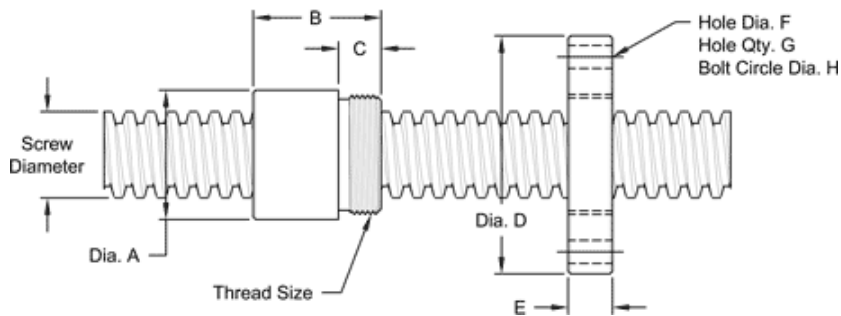
NUT SPECIFICATIONS	RH	LH
NUT PART NUMBER	AN 100 R 050 B	AN 100 L 050 B
NUT WITH FLANGE	AF 100 R 050	AF 100 L 050
DYNAMIC LOAD CAPACITY (LBS.)	5,000	
STATIC LOAD CAPACITY (LBS.)	16,000	
EFFICIENCY	58.20%	
MATERIAL	BRONZE	
NOMINAL DIAMETER "A"	1.50 IN.	
NUT LENGTH "B"	1.50 IN.	
THREAD LENGTH "C"	0.50 IN.	
THREAD SIZE	1.37516 UN	
FLANGE PART NO.	FL1375	
FLANGE DIAMETER "D"	2.75 IN.	
FLANGE THICKNESS "E"	0.52 IN.	
FLANGE HOLE DIAMETER "F"	0.266 IN.	
NUMBER OF HOLES IN FLANGE "G"	4	
FLANGE BOLT CIRCLE "H"	2.260 IN.	
FLANGE MATERIAL	BLACK OXIDE COATED STEEL	

1" - 1 MULTIPLE LEAD ACME MACHINE SCREW

Available in alloy steel with a corresponding aluminum bronze nut.
Right hand threads are available.

MACHINE SCREW SPECIFICATIONS	RH
ALLOY STEEL SCREW PART NO.	SS 100 R 100 A
THREAD FORM	STUB ACME
SCREW DIAMETER (TURNS/INCH)	1 1
PITCH / LEAD	0.010IN./1.00 IN.
ROOT DIAMETER	.930 IN.
SCREW WEIGHT (LB./FT.)	2.4
TORQUE TO RAISE 1 POUND	0.233 IN.- LB.
MAXIMUM SCREW LENGTH	12 FEET

NUT AND FLANGE SPECIFICATIONS



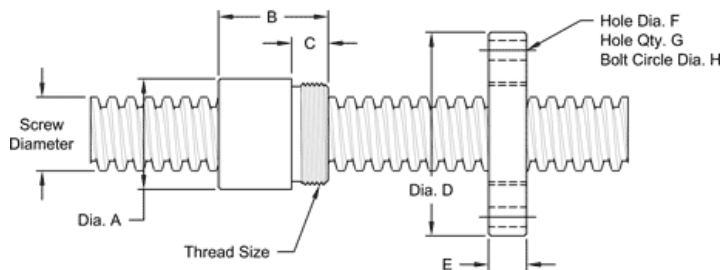
NUT SPECIFICATIONS	RH
NUT PART NO.	SN 100 R 100 B
NUT WITH FLANGE PART NO.	SN 100 R 100
DYNAMIC LOAD CAPACITY (LBS.)	5,000
STATIC LOAD CAPACITY (LBS.)	16,000
EFFICIENCY	69.70%
MATERIAL	BRONZE
NOMINAL DIAMETER "A"	1.50 IN.
NUT LENGTH "B"	1.50 IN.
THREAD LENGTH "C"	0.50 IN.
THREAD SIZE	1.37516 UN
FLANGE PART NUMBER	FL1375
FLANGE DIAMETER "D"	2.75 IN.
FLANGE THICKNESS "E"	0.52 IN.
FLANGE HOLE DIAMETER "F"	0.266 IN.
NUMBER OF HOLES IN FLANGE "G"	4
FLANGE BOLT CIRCLE "H"	2.260 IN.
FLANGE MATERIAL	BLACK OXIDE COATED STEEL

1 1/4" - 4 SINGLE LEAD ACME MACHINE SCREW

Available in both alloy steel and stainless steel with a corresponding aluminum bronze nut.
Right hand and left hand threads are available.

MACHINE SCREW SPECIFICATIONS	RH	LH
ALLOY STEEL SCREW PART NO.	AS 125 R 025 A	AS 125 L 025 A
STAINLESS STEEL SCREW PART NO.	AS 125 R 025 S	AS 125 L 025 S
THREAD FORM	ACME	
SCREW DIAMETER (TURNS / INCH)	1 1/4" - 4	
PITCH / LEAD	0.250 IN.	
ROOT DIAMETER	0.947 IN.	
SCREW WEIGHT (LB./FT.)	3.3	
TORQUE TO RAISE 1 POUND	0.113 IN.LB.	
MAXIMUM SCREW LENGTH	12 FEET	

NUT AND FLANGE SPECIFICATIONS



NUT SPECIFICATIONS	RH	LH
NUT PART NO.	AN 125 R 025 B	AN 125 L 025 B
NUT WITH FLANGE PART NO.	AF 125 R 025	AF 125 L 025
DYNAMIC LOAD CAPACITY (LBS.)	7,812	
STATIC LOAD CAPACITY (LBS.)	25,000	
EFFICIENCY	36.0%	
MATERIAL	BRONZE	
NOMINAL DIAMETER "A"	2.12 IN.	
NUT LENGTH "B"	1.75 IN.	
THREAD LENGTH "C"	0.812 IN.	
THREAD SIZE	1.96718 UN	
FLANGE PART NO.	FL1967	
FLANGE DIAMETER "D"	4.20 IN.	
FLANGE THICKNESS "E"	0.832 IN.	
FLANGE HOLE DIAMETER "F"	0.397 IN.	
NUMBER OF HOLES IN FLANGE "G"	4	
FLANGE BOLT CIRCLE "H"	3.440 IN.	
FLANGE MATERIAL	BLACK OXIDE COATED STEEL	

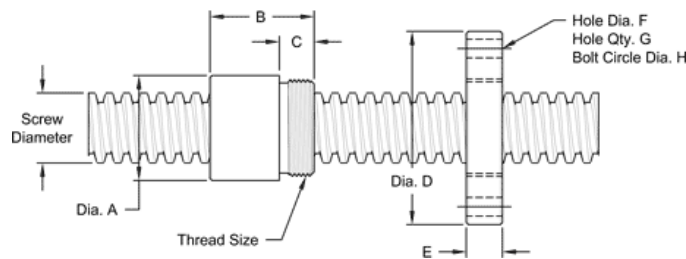
1 1/2" - 4 SINGLE LEAD ACME MACHINE SCREW

Available in both alloy steel and stainless steel with a corresponding aluminum bronze nut.
Right hand and left hand threads are available.

MACHINE SCREW SPECIFICATIONS	RH	LH
ALLOY STEEL SCREW PART NO.	AS 150 R 025 A	AS 150 L 025 A
STAINLESS STEEL SCREW PART NO.	AS 150 R 025 S	AS 150 L 025 S
THREAD FORM	ACME	
SCREW DIAMETER (TURNS / INCH)	1 1/2" - 4	
PITCH / LEAD	0.250 IN.	
ROOT DIAMETER	1.196 IN.	
SCREW WEIGHT (LB./FT.)	5.0	
TORQUE TO RAISE 1 POUND	0.130 IN.LB.	
MAXIMUM SCREW LENG TH	20 FEET*	

* 12 feet for stainless steel stock

NUT AND FLANGE SPECIFICATIONS



NUT SPECIFICATIONS	RH	LH
NUT PART NO.	AN 150 R 025 B	AN 150 L 025 B
NUT WITH FLANGE PART NO.	AF 150 R 025	AF 150 L 025
DYNAMIC LOAD CAPACITY (LBS.)	11,250	
STATIC LOAD CAPACITY (LBS.)	36,000	
EFFICIENCY	31.6%	
MATERIAL	BRONZE	
NOMINAL DIAMETER "A"	2.12 IN.	
NUT LENGTH "B"	2.30 IN.	
THREAD LENGTH "C"	0.812 IN.	
THREAD SIZE	1.96718 UN	
FLANGE PART NO.	FL1967	
FLANGE DIAMETER "D"	4.20 IN.	
FLANGE THICKNESS "E"	0.832 IN.	
FLANGE HOLE DIAMETER "F"	0.397 IN.	
NUMBER OF HOLES IN FLANGE "G"	4	
FLANGE BOLT CIRCLE "H"	3.440 IN.	
FLANGE MATERIAL	BLACK OXIDE COATED STEEL	

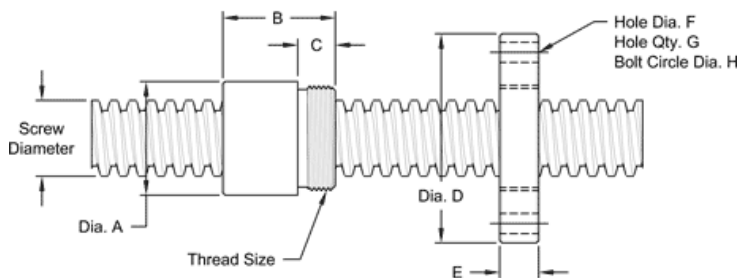
1 1/2" - 2 DOUBLE LEAD ACME MACHINE SCREW

Available in both alloy steel and stainless steel with a corresponding aluminum bronze nut.
Right hand and left hand threads are available.

MACHINE SCREW SPECIFICATIONS	RH	LH
ALLOY STEEL SCREW PART NO.	AS 150 R 050 A	AS 150 L 050 A
STAINLESS STEEL SCREW PART NO.	AS 150 R 050 S	AS 150 L 050 S
THREAD FORM	ACME	
SCREW DIAMETER - TURNS / INCH	1 1/2" - 2	
PITCH / LEAD	0.250 IN./0.500 IN.	
ROOT DIAMETER	1.196 IN.	
SCREW WEIGHT (LB./FT.)	4.9	
TORQUE TO RAISE 1 POUND	0.171 IN.LB.	
MAXIMUM SCREW LENGTH	20 FEET"	

* 12 feet for stainless steel stock

NUT AND FLANGE SPECIFICATIONS



NUT SPECIFICATIONS	RH	LH
NUT PART NO.	AN 150 R 050 B	AN 150 L 050 B
NUT WITH FLANGE PART NO.	AF 150 R 050	AF 150 L 050
DYNAMIC LOAD CAPACITY (LBS.)	11,250	
STATIC LOAD CAPACITY (LBS.)	36,000	
EFFICIENCY	47.6%	
MATERIAL	BRONZE	
NOMINAL DIAMETER "A"	2.12 IN.	
NUT LENGTH "B"	2.30 IN.	
THREAD LENGTH "C"	0.812 IN.	
THREAD SIZE	1.96718 UN	
FLANGE PART NO.	FL1967	
FLANGE DIAMETER "D"	4.20 IN.	
FLANGE THICKNESS "E"	0.832 IN.	
FLANGE HOLE DIAMETER "F"	0.397 IN.	
NUMBER OF HOLES IN FLANGE "G"	4	
FLANGE BOLT CIRCLE "H"	3.440 IN.	
FLANGE MATERIAL	BLACK OXIDE COATED STEEL	

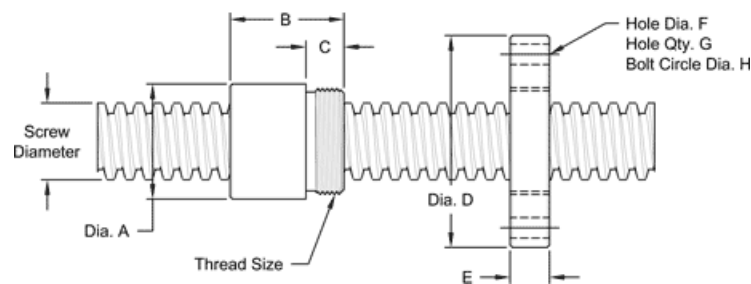
1 1/2" - 2 2/3 SINGLE LEAD ACME MACHINE SCREW

Available in both alloy steel and stainless steel with a corresponding aluminum bronze nut.
Right hand and left hand threads are available.

MACHINE SCREW SPECIFICATIONS	RH	LH
ALLOY STEEL SCREW PART NO.	SS 150 R 038 A	SS 150 L 038 A
STAINLESS STEEL SCREW PART NO.	SS 150 R 038 S	SS 150 L 038 S
THREAD FORM	STUB ACME	
SCREW DIAMETER - TURNS / INCH	1 1/2" - 2 2/3	
PITCH / LEAD	0.375 IN.	
ROOT DIAMETER	1.216 IN.	
SCREW WEIGHT (LB./FT.)	4.6	
TORQUE TO RAISE 1 POUND	0.173 IN.LB.	
MAXIMUM SCREW LENGTH	20 FEET*	

* 12 feet for stainless steel stock

NUT AND FLANGE SPECIFICATIONS



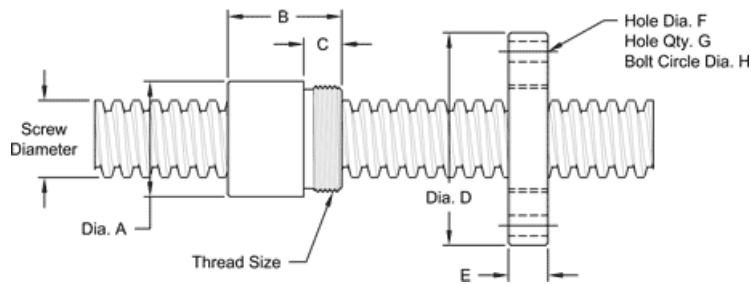
NUT SPECIFICATIONS	RH	LH
NUT PART NO.	SN 150 R 038 B	SN 150 L 038 B
NUT WITH FLANGE PART NO.	SF 150 R 038	SF 150 L 038
DYNAMIC LOAD CAPACITY (LBS.)	11,250	
STATIC LOAD CAPACITY (LBS.)	36,000	
EFFICIENCY	40.5%	
MATERIAL	BRONZE	
NOMINAL HOLE DIAMETER "A"	2.12 IN.	
NUT LENGTH "B"	2.30 IN.	
THREAD LENGTH "C"	0.812 IN.	
THREAD SIZE	1.96718 UN	
FLANGE PART NO.	FL1967	
FLANGE DIAMETER "D"	4.20 IN.	
FLANGE THICKNESS "E"	0.832 IN.	
FLANGE HOLE DIAMETER "F"	0.397 IN.	
NUMBER OF HOLES IN FLANGE "G"	4	
FLANGE BOLT CIRCLE "H"	3.440 IN.	
FLANGE MATERIAL	BLACK OXIDE COATED STEEL	

1 1/2" - 2 2/3 SINGLE LEAD ACME MACHINE SCREW

Available in both alloy steel and stainless steel with a corresponding aluminum bronze nut.
Right hand and left hand threads are available.

MACHINE SCREW SPECIFICATIONS	RH	LH
ALLOY STEEL SCREW PART NO.	AS 150 R 038 A	AS 150 L 038 A
STAINLESS STEEL SCREW PART NO.	AS 150 R 038 S	AS 150 L 038 S
THREAD FORM	ACME	
SCREW DIAMETER - TURNS / INCH	1 1/2" - 2 2/3	
PITCH / LEAD	0.375 IN.	
ROOT DIAMETER	1.066 IN.	
SCREW WEIGHT (LB./FT.)	4.6	
TORQUE TO RAISE 1 POUND	0.146 IN.LB.	
MAXIMUM SCREW LENGTH	20 FEET*	
*12 FEET FOR STAINLESS STEEL STOCK		

NUT AND FLANGE SPECIFICATIONS



NUT SPECIFICATIONS	RH	LH
NUT PART NO.	AN 150 R 038 B	AN 150 L 038 B
NUT WITH FLANGE PART NO.	AF 150 R 038	AF 150 L 038
DYNAMIC LOAD CAPACITY (LBS.)	11,250	
STATIC LOAD CAPACITY (LBS.)	36,000	
EFFICIENCY	41.8%	
MATERIAL	BRONZE	
NOMINAL DIAMETER "A"	2.12 IN.	
NUT LENGTH "B"	2.30 IN.	
THREAD LENGTH "C"	0.812 IN.	
THREAD SIZE	1.96718 UN	
FLANGE PART NO.	FL1967	
FLANGE DIAMETER "D"	4.20 IN.	
FLANGE THICKNESS "E"	0.832 IN.	
FLANGE HOLE DIAMETER "F"	0.397 IN.	
NUMBER OF HOLES IN FLANGE "G"	4	
FLANGE BOLT CIRCLE "H"	3.440 IN.	
FLANGE MATERIAL	BLACK OXIDE COATED STEEL	

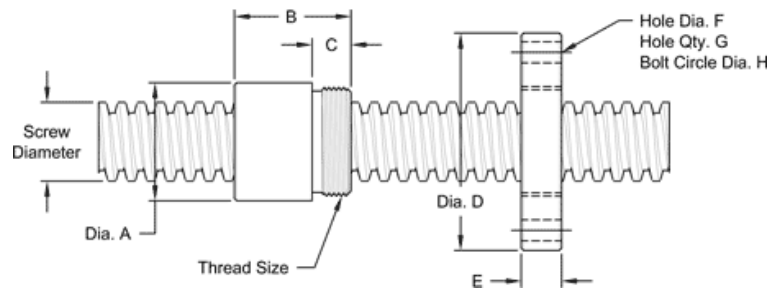
2" - 4 SINGLE LEAD ACME MACHINE SCREW

Available in both alloy steel and stainless steel with a corresponding aluminum bronze nut. Right hand and left hand threads are available.

MACHINE SCREW SPECIFICATIONS	RH	LH
ALLOY STEEL SCREW PART NO.	AS 200 R 025 A	AS 200 L 025 A
STAINLESS STEEL SCREW PART NO.	AS 200 R 025 S	AS 200 L 025 S
THREAD FORM	ACME	
SCREW DIAMETER - TURNS / INCH	2" - 4	
PITCH / LEAD	0.250 IN.	
ROOT DIAMETER	1.695 IN.	
SCREW WEIGHT (LB./ FT.)	9.3	
TORQUE TO RAISE 1 POUND	0.162 IN.- LB.	
MAXIMUM SCREW LENGTH	20 FEET*	

*12 feet for stainless steel stock

NUT AND FLANGE SPECIFICATIONS



NUT SPECIFICATIONS	RH	LH
NUT PART NO.	AN 200 R 025 B	AN 200 L 025 B
NUT WITH FLANGE PART NO.	AF 200 R 025	AF 200 L 025
DYNAMIC LOAD CAPACITY (LBS.)	20,000	
STATIC LOAD CAPACITY (LBS.)	64,000	
EFFICIENCY	25.4%	
MATERIAL	BRONZE	
NOMINAL DIAMETER "A"	2.75 IN.	
NUT LENGTH "B"	2.75 IN.	
THREAD LENGTH "C"	0.880 IN.	
THREAD SIZE	2.54818 UN	
FLANGE PART NO.	FL2548	
FLANGE DIAMETER "D"	4.94 IN.	
FLANGE THICKNESS "E"	0.895 IN.	
FLANGE HOLE DIAMETER "F":	0.531 IN	
NUMBER OF HOLES IN FLANGE "G"	4	
FLANGE BOLT CIRCLE "H"	4.062 IN.	
FLANGE MATERIAL	BLACK OXIDE COATED STEEL	

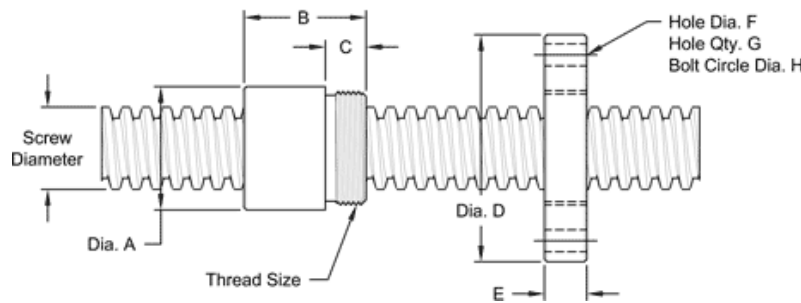
2" - 2 SINGLE LEAD ACME MACHINE SCREW

Available in both alloy steel and stainless steel with a corresponding aluminum bronze nut.
Right hand and left hand threads are available.

MACHINE SCREW SPECIFICATIONS	RH	LH
ALLOY STEEL SCREW PART NO.	AS 200 R 050 A	AS 200 L 050 A
STAINLESS STEEL SCREW PART NO.	AS 200 R 050 S	AS 200 L 050 S
THREAD FORM	ACME	
SCREW DIAMETER - TURNS/INCH	2" - 2	
PITCH/LEAD	0.500 IN.	
ROOT DIAMETER	1.435 IN.	
SCREW WEIGHT (LB./FT.)	8.1	
TORQUE TO RAISE 1 POUND	0.195 IN.LB.	
MAXIMUM SCREW LENGTH	20 FEET*	

* 12 feet for stainless steel stock

NUT AND FLANGE SPECIFICATIONS



NUT SPECIFICATIONS	RH	LH
NUT PART NUMBER	AN 200 R 050 B	AN 200 R 050 B
NUT WITH FLANGE	AF 20 0R 050	AF 200 R 050
DYNAMIC LOAD CAPACITY (LBS.)	20,000	
STATIC LOAD CAPACITY (LBS.)	64,000	
EFFICIENCY	41.9%	
MATERIAL	BRONZE	
NOMINAL DIAMETER "A"	2.75 IN.	
NUT LENGTH "B"	2.75 IN.	
THREAD LENGTH "C"	0.880 IN.	
THREAD SIZE	2.54818 UN	
FLANGE PART NUMBER	FL2548	
FLANGE DIAMETER "D"	4.94 IN.	
FLANGE THICKNESS "E"	0.895 IN.	
FLANGE HOLE DIAMETER "F"	0.531 IN.	
NUMBER OF HOLES IN FLANGE "G"	4	
FLANGE BOLT CIRCLE "H"	4.062 IN.	
FLANGE MATERIAL	BLACK OXIDE COATED STEEL	

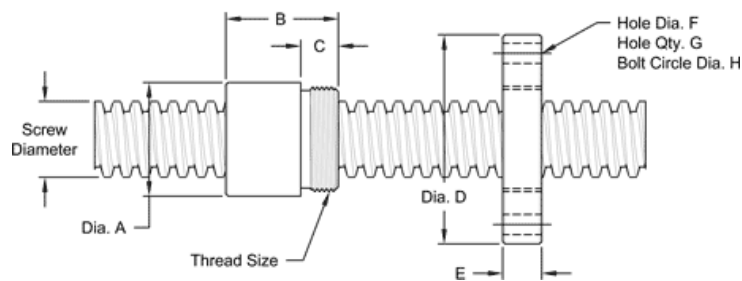
2 1/4" - 4 SINGLE LEAD ACME MACHINE SCREW

Available in both alloy steel and stainless steel with a corresponding aluminum bronze nut.
Right hand and left hand threads are available.

MACHINE SCREW SPECIFICATIONS	RH	LH
ALLOY STEEL SCREW PART NO.	AS 225 R 025 A	AS 225 L 025 A
STAINLESS STEEL SCREW PART NO.	AS 225 R 025 S	AS 225 L 025 S
THREAD FORM	ACME	
SCREW DIAMETER - TURNS/INCH	2 1/4" - 4	
PITCH/LEAD	0.250 IN.	
ROOT DIAMETER	1.944 IN.	
SCREW WEIGHT (LB/FT)	11.2	
TORQUE TO RAISE 1 POUND	0.178 IN.LB.	
MAXIMUM SCREW LENGTH	20 FEET*	

* 12 feet for stainless steel stock

NUT AND FLANGE SPECIFICATIONS



NUT SPECIFICATIONS	RH	LH
NUT PART NO.	AN 225 R 025 B	AN 225 L 025 B
NUT WITH FLANGE PART NO.	AF 225 R 025	AF 225 L 025
DYNAMIC LOAD CAPACITY (LBS)	30,000	
STATIC LOAD CAPACITY (LBS)	81,000	
EFFICIENCY	23.1%	
MATERIAL	BRONZE	
NOMINAL DIAMETER "A"	3.38 IN.	
NUT LENGTH "B"	3.06 IN.	
THREAD LENGTH "C"	1.560 IN.	
THREAD SIZE	3.13712 UN	
FLANGE PART NUMBER	FL3137	
FLANGE DIAMETER "D"	5.38 IN.	
FLANGE THICKNESS "E"	1.580 IN.	
FLANGE HOLE DIAMETER "F"	0.656 IN.	
NUMBER OF HOLES IN FLANGE "G"	6	
FLANGE BOLT CIRCLE "H"	4.375 IN.	
FLANGE MATERIAL	BLACK OXIDE COATED STEEL	

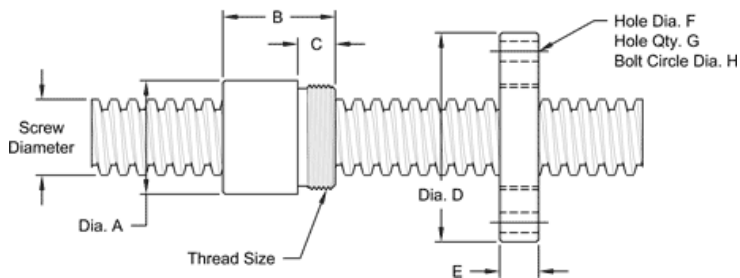
2 1/4" - 2 SINGLE LEAD ACME MACHINE SCREW

Available in both alloy steel and stainless steel with a corresponding aluminum bronze nut.
Right hand and left hand threads are available.

MACHINE SCREW SPECIFICATIONS	RH	LH
ALLOY STEEL SCREW PART NO.	AS 225 R 050 A	AS 225 L 050 A
STAINLESS STEEL SCREW PART NO.	AS 225 R 050 S	AS 225 L 050 S
THREAD FORM	ACME	
SCREW DIAMETER - TPI	2 1/4" - 2	
PITCH/LEAD	0.500 IN.	
ROOT DIAMETER	1.685 IN.	
SCREW WEIGHT (LB./FT.)	10.6	
TORQUE TO RAISE 1 POUND	.211 IN.LB.	
MAXIMUM SCREW LENGTH	20 FEET *	

* 12 feet for stainless steel stock

NUT AND FLANGE SPECIFICATIONS



NUT SPECIFICATIONS	RH	LH
NUT PART NUMBER	AN 225 R 050 B	AN 225 L 050 B
NUT WITH FLANGE	AF 225 R 050	AF 225 L 050
DYNAMIC LOAD CAPACITY (LBS.)	30,000	
STATIC LOAD CAPACITY (LBS.)	81,000	
EFFICIENCY	38.7%	
MATERIAL	BRONZE	
NOMINAL DIAMETER "A"	3.38 IN.	
NUT LENGTH "B"	3.06 IN.	
THREAD LENGTH "C"	1.560 IN.	
THREAD SIZE	3.13712 UN	
FLANGE PART NUMBER	FL3137	
FLANGE DIAMETER "D"	5.38 IN.	
FLANGE THICKNESS "E"	1.580 IN.	
FLANGE HOLE DIAMETER "F"	0.656 IN.	
NUMBER OF HOLES IN FLANGE "G"	6	
FLANGE BOLT CIRCLE "H"	4.375 IN.	
FLANGE MATERIAL	BLACK OXIDE COATED STEEL	

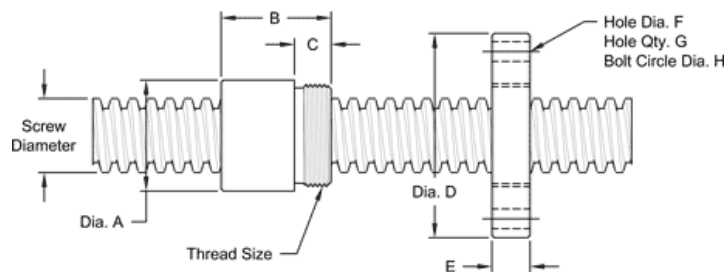
2 1/2" - 4 SINGLE LEAD ACME MACHINE SCREW

Available in both alloy steel and stainless steel with a corresponding aluminum bronze nut. Right hand and left hand threads are available.

MACHINE SCREW SPECIFICATIONS	RH	LH
ALLOY STEEL SCREW PART NO.	AS 250 R 025 A	AS 250 L 025 A
STAINLESS STEEL SCREW PART NO.	AS 250 R 025 S	AS 250 L 025 S
THREAD FORM	ACME	
SCREW DIAMETER - TURNS/INCH	2 1/2" - 4	
PITCH/LEAD	0.250 IN.	
ROOT DIAMETER	2.193 IN.	
SCREW WEIGHT (LB./FT.)	13.4	
TORQUE TO RAISE 1 POUND	0.194 IN.LB.	
MAXIMUM SCREW LENGTH	20 FEET*	

* 12 feet for stainless steel stock

NUT AND FLANGE SPECIFICATIONS



NUT SPECIFICATIONS	RH	LH
NUT PART NUMBER	AN 250 R 025 B	AN 250 L 025 B
NUT WITH FLANGE	AF 250 R 025	AF 250 L 025
DYNAMIC LOAD CAPACITY (LBS.)	40,000	
STATIC LOAD CAPACITY (LBS.)	100,000	
EFFICIENCY	21.2%	
MATERIAL	BRONZE	
NOMINAL DIAMETER "A"	3.38 IN.	
NUT LENGTH "B"	3.38 IN.	
THREAD LENGTH "C"	1.560 IN.	
THREAD SIZE	3.13712 UN	
FLANGE PART NUMBER	FL3137	
FLANGE DIAMETER "D"	5.38 IN	
FLANGE THICKNESS "E"	1.580 IN.	
FLANGE HOLE DIAMETER "F"	0.656 IN.	
NUMBER OF HOLES IN FLANGE "G"	6	
FLANGE BOLT CIRCLE "H"	4.375 IN.	
FLANGE MATERIAL	BLACK OXIDE COATED STEEL	

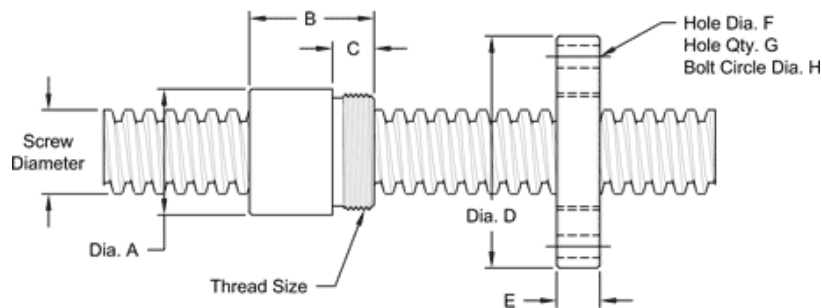
2 1/2" - 2 SINGLE LEAD ACME MACHINE SCREW

Available in both alloy steel and stainless steel with a corresponding aluminum bronze nut.
Right hand and left hand threads are available.

MACHINE SCREW SPECIFICATIONS	RH	LH
ALLOY STEEL SCREW PART NO.	AS 250 R 050 A	AS 250 L 050 A
STAINLESS STEEL SCREW PART NO.	AS 250 R 050 S	AS 250 L 050 S
THREAD FORM	ACME	
SCREW DIAMETER - TURNS/INCH	2 1/2" - 2	
PITCH/LEAD	0.500 IN.	
ROOT DIAMETER	1.934 IN.	
SCREW WEIGHT (LB./FT.)	13.4	
TORQUE TO RAISE 1 POUND	0.227IN.LB.	
MAXIMUM SCREW LENGTH	20 FEET*	

*12 feet stainless steel stock

NUT AND FLANGE SPECIFICATIONS



NUT SPECIFICATIONS	RH	LH
NUT PART NUMBER	AN 250 R 050 B	AN 250 L 050 B
NUT WITH FLANGE	AF 250 R 050	AF 250 L 050
DYNAMIC LOAD CAPACITY (LBS.)	40,000	
STATIC LOAD CAPACITY (LBS.)	100,000	
EFFICIENCY	36.0%	
MATERIAL	BRONZE	
NOMINAL DIAMETER "A"	3.38 IN.	
NUT LENGTH "B"	3.38 IN.	
THREAD LENGTH "C"	1.560 IN.	
THREAD SIZE	3.13712 UN	
FLANGE PART NUMBER	FL3137	
FLANGE DIAMETER "D"	5.38 IN.	
FLANGE THICKNESS "E"	1.580 IN.	
FLANGE HOLE DIAMETER "F"	0.656 IN.	
NUMBER OF HOLES IN FLANGE "G"	6	
FLANGE BOLT CIRCLE "H"	4.375 IN.	
FLANGE MATERIAL	BLACK OXIDE COATED STEEL	

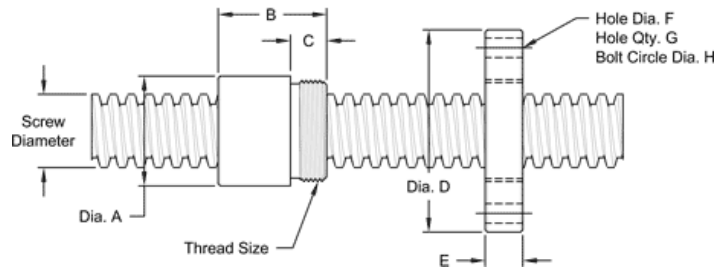
3 3/8"-1 1/2 SINGLE LEAD STUB ACME MACHINE SCREW

Available in both alloy steel and stainless steel with a corresponding aluminum bronze nut.
Right hand and left hand threads are available.

MACHINE SCREW SPECIFICATIONS	RH	LH
ALLOY STEEL SCREW PART NO.	SS 338 R 067 A	SS 338 L 067 A
STAINLESS STEEL SCREW PART NO.	SS 338 R 067 S	SS 338 L 067 S
THREAD FORM	STUB ACME	
SCREW DIAMETER - TURNS/INCH	3 3/8" 1 1/2	
PITCH/LEAD	0.667 IN.	
ROOT DIAMETER	2.902 IN.	
SCREW WEIGHT (LB./FT.)	20.1	
TORQUE TO RAISE 1 POUND	0.314 IN.LB.	
MAXIMUM SCREW LENGTH	20 FEET*	

* 12 feet for stainless steel stock

NUT AND FLANGE SPECIFICATIONS



NUT SPECIFICATIONS	RH	LH
NUT PART NUMBER	SN 338 R 067 B	SN 338 L 067 B
NUT WITH FLANGE	SF 338 R 067	SF 338 L 067
DYNAMIC LOAD CAPACITY (LBS.)	40,000	
STATIC LOAD CAPACITY (LBS.)	100,000	
EFFICIENCY	34.7%	
MATERIAL	BRONZE	
NOMINAL DIAMETER "A"	4.50 IN.	
NUT LENGTH "B"	4.50 IN.	
THREAD LENGTH "C"	2.00 IN.	
THREAD SIZE	4.32512 UN	
FLANGE PART NUMBER	FL4325	
FLANGE DIAMETER "D"	7.38 IN	
FLANGE THICKNESS "E"	2.020 IN.	
FLANGE HOLE DIAMETER "F"	0.781 IN.	
NUMBER OF HOLES IN FLANGE "G"	6	
FLANGE BOLT CIRCLE "H"	6.250 IN.	
FLANGE MATERIAL	BLACK OXIDE COATED STEEL	

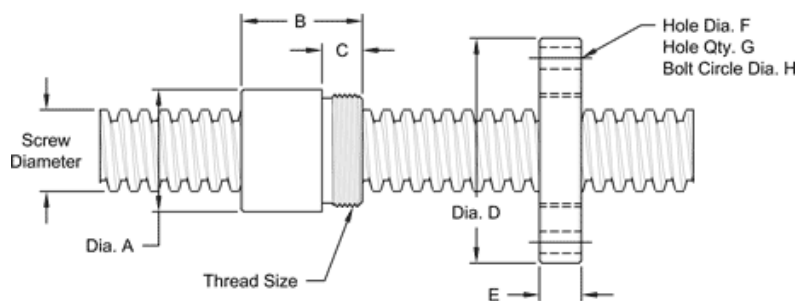
3 1/2" - 1 1/2 SINGLE LEAD ACME MACHINE SCREW

Available in both alloy steel and stainless steel with a corresponding aluminum bronze nut.
Right hand and left hand threads are available.

MACHINE SCREW SPECIFICATIONS	RH	LH
ALLOY STEEL SCREW PART NO.	AS 350 R 067 A	AS 350 L 067 A
STAINLESS STEEL SCREW PART NO.	AS 350 R 067 S	AS 350 L 067 S
THREAD FORM		ACME
SCREW DIAMETER - TURNS/INCH		3 1/2" - 1 1/2
PITCH/LEAD		0.667 IN.
ROOT DIAMETER		2.760 IN.
SCREW WEIGHT (LB./FT.)		30
TORQUE TO RAISE 1 POUND		0.313 IN.LB.
MAXIMUM SCREW LENGTH		20 FEET*

*12 feet for stainless steel stock

NUT AND FLANGE SPECIFICATIONS



NUT SPECIFICATIONS	RH	LH
NUT PART NO.	AN 350 R 067 B	AN 350 L 067 B
NUT WITH FLANGE PART NO.	AF 350 R 067	AF 350 L 067
DYNAMIC LOAD CAPACITY (LBS.)		60,000
STATIC LOAD CAPACITY (LBS.)		200,000
EFFICIENCY		34.8%
MATERIAL		BRONZE
NOMINAL DIAMETER "A"		4.50 IN.
NUT LENGTH "B"		4.50 IN.
THREAD LENGTH "C"		2.000 IN.
THREAD SIZE		4.32512 UN
FLANGE PART NUMBER		FL4325
FLANGE DIAMETER "D"		7.38 IN.
FLANGE THICKNESS "E"		2.020 IN.
FLANGE HOLE DIAMETER "F"		0.781 IN.
NUMBER OF HOLES IN FLANGE "G"		6
FLANGE BOLT CIRCLE "H"		6.250 IN.
FLANGE MATERIAL		BLACK OXIDE COATED STEEL

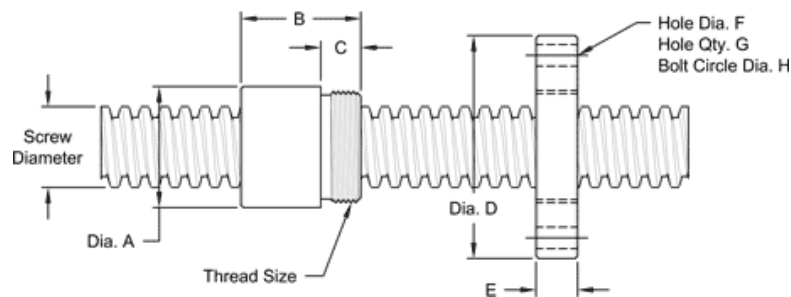
3 3/4" - 1 1/2 SINGLE LEAD ACME MACHINE SCREW

Available in both alloy steel and stainless steel with a corresponding aluminum bronze nut.
Right hand and left hand threads are available.

MACHINE SCREW SPECIFICATIONS	RH	LH
ALLOY STEEL SCREW PART NO.	AS 375 R 067 A	AS 375 L 067 A
STAINLESS STEEL SCREW PART NO.	AS 375 R 067 S	AS 375 L 067 S
THREAD FORM	ACME	
SCREW DIAMETER - TURNS/INCH	3 3/4" - 1 1/2	
PITCH/LEAD	0.667 IN.	
ROOT DIAMETER	3.009 IN.	
SCREW WEIGHT (LB./FT.)	38.3	
TORQUE TO RAISE 1 POUND	0.329 IN.LB.	
MAXIMUM SCREW LENGTH	20 FEET*	

*12 feet for stainless steel stock

NUT AND FLANGE SPECIFICATIONS



NUT SPECIFICATIONS	RH	LH
NUT PART NO.	AN 375 R 067 B	AN 375 L 067 B
NUT WITH FLANGE PART NO.	AF 375 R 067	AF 375 L 067
DYNAMIC LOAD CAPACITY (LBS.)	70,000	
STATIC LOAD CAPACITY (LBS.)	260,000	
EFFICIENCY	33.1%	
MATERIAL	BRONZE	
NOMINAL DIAMETER "A"	5.00 IN.	
NUT LENGTH "B"	5.50 IN.	
THREAD LENGTH "C"	2.000 IN.	
THREAD SIZE	4.75012 UN	
FLANGE PART NUMBER	FL4750	
FLANGE DIAMETER "D"	9.00 IN	
FLANGE THICKNESS "E"	2.020 IN.	
FLANGE HOLE DIAMETER "F"	1.063 IN.	
NUMBER OF HOLES IN FLANGE "G"	4	
FLANGE BOLT CIRCLE "H"	7.000 IN.	
FLANGE MATERIAL	BLACK OXIDE COATED STEEL	

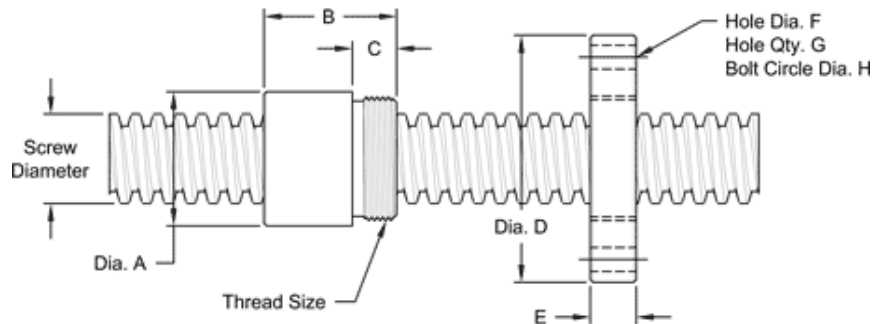
4 1/2" - 1 1/2 SINGLE LEAD ACME MACHINE SCREW

Available in both alloy steel and stainless steel with a corresponding aluminum bronze nut.
Right hand and left hand threads are available.

MACHINE SCREW SPECIFICATIONS	RH	LH
ALLOY STEEL SCREW PART NO.	AS 450 R 067 A	AS 450 L 067 A
STAINLESS STEEL SCREW PART NO.	AS 450 R 067 S	AS 450 L 067 S
THREAD FORM	ACME	
SCREW DIAMETER - TURNS/INCH	4 1/2" - 1 1/2	
PITCH/LEAD	0.067 IN.	
ROOT DIAMETER	3.757 IN.	
SCREW WEIGHT (LB/FT)	45.0	
TORQUE TO RAISE 1 POUND	0.378 IN.LB.	
MAXIMUM SCREW LENGTH	20 FEET*	

* 12 feet for stainless steel stock

NUT AND FLANGE SPECIFICATIONS



NUT SPECIFICATIONS	RH	LH
NUT PART NO.	AN 450 R 067 B	AN 450 L 067 B
NUT WITH FLANGE PART NO.	AF 450 R 067	AF 450 L 067
DYNAMIC LOAD CAPACITY (LBS)	100,000	
STATIC LOAD CAPACITY (LBS).	..320,000	
EFFICIENCY	28.9%	
MATERIAL	BRONZE	
NOMINAL DIAMETER "A"	6.00 IN.	
NUT LENGTH "B"	6.00 IN.	
THREAD LENGTH "C"	2.000 IN.	
THREAD SIZE	5.49712 UN	
FLANGE PART NUMBER	FL5497	
FLANGE DIAMETER "D"	9.75 IN	
FLANGE THICKNESS "E"	2.020 IN.	
FLANGE HOLE DIAMETER "F"	1.031 IN.	
NUMBER OF HOLES IN FLANGE "G"	6	
FLANGE BOLT CIRCLE "H"	8.000 IN.	
FLANGE MATERIAL	BLACK OXIDE COATED STEEL	

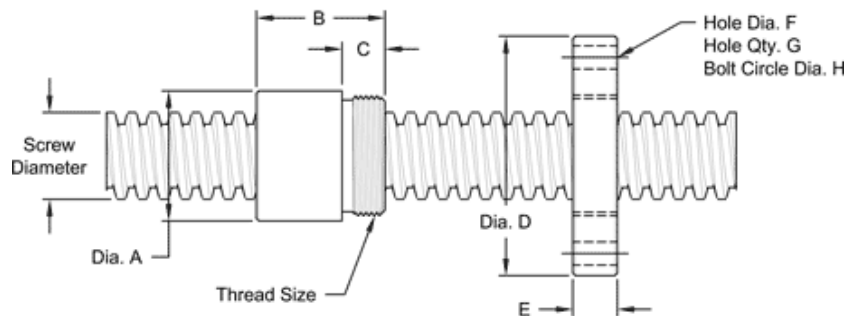
5" - 1 1/2 SINGLE LEAD ACME MACHINE SCREW

Available in both alloy steel and stainless steel with a corresponding aluminum bronze nut.
Right hand and left hand threads are available.

MACHINE SCREW SPECIFICATIONS	RH	LH
ALLOY STEEL SCREW PART NO.	AS 500 R 067 A	AS 500 L 067 A
STAINLESS STEEL SCREW PART NO.	AS 500 R 067 S	AS 500 L 067 S
THREAD FORM	ACME	
SCREW DIAMETER - TURNS/INCH	5" - 1 1/2	
PITCH/LEAD	0.667 IN.	
ROOT DIAMETER	4.256 IN.	
SCREW WEIGHT (LB./FT)	57.5	
TORQUE TO RAISE 1 POUND	0.418 IN.LB.	
MAXIMUM SCREW LENGTH	20 FEET*	

12 feet for stainless steel stock

NUT AND FLANGE SPECIFICATIONS



NUT SPECIFICATIONS	RH	LH
NUT PART NO.	AN 500 R 067 B	AN 500 L 067 B
NUT WITH FLANGE PART NO.	AF 500 R 067	AF 500 L 067
DYNAMIC LOAD CAPACITY (LBS)	150,000	
STATIC LOAD CAPACITY (LBS.)	470,000	
EFFICIENCY	26.7%	
MATERIAL	BRONZE	
NOMINAL DIAMETER "A"	7.50 IN.	
NUT LENGTH "B"	7.50 IN.	
THREAD LENGTH "C"	2.00 IN.	
THREAD SIZE	7.0668 UN	
FLANGE PART NUMBER	FL7066	
FLANGE DIAMETER "D"	12.00 IN	
FLANGE THICKNESS "E"	2.020 IN.	
FLANGE HOLE DIAMETER "F"	1.125 IN.	
NUMBER OF HOLES IN FLANGE "G"	8	
FLANGE BOLT CIRCLE "H"	10.000 IN.	
FLANGE MATERIAL	BLACK OXIDE COATED STEEL	

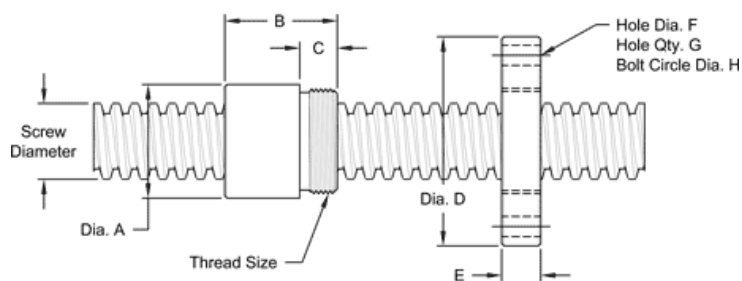
6" - 1 1/3 SINGLE LEAD ACME MACHINE SCREW

Available in both alloy steel and stainless steel with a corresponding aluminum bronze nut.
Right hand and left hand threads are available.

MACHINE SCREW SPECIFICATIONS	RH	LH
ALLOY STEEL SCREW PART NO.	AS 600 R 075 A	AS 600 L 075 A
STAINLESS STEEL SCREW PART NO.	AS 600 R 075 S	AS 600 L 075 S
THREAD FORM	ACME	
SCREW DIAMETER - TURNS/INCH	6" - 1 1/3	
PITCH/LEAD	0.750 IN.	
ROOT DIAMETER	5.169 IN.	
SCREW WEIGHT (LB./FT.)	87	
TORQUE TO RAISE 1 POUND	0.485 IN.LB.	
MAXIMUM SCREW LENGTH	20 FEET*	

*12 feet for stainless steel stock

NUT AND FLANGE SPECIFICATIONS



NUT SPECIFICATIONS	RH	LH
NUT PART NO.	AN 600 R 075 B	AN 600 L 075 B
NUT WITH FLANGE PART NO.	AF 600 R 075	AF 600 L 075
DYNAMIC LOAD CAPACITY (LBS.)	150,000	
STATIC LOAD CAPACITY (LBS.)	470,000	
EFFICIENCY	25.4%	
MATERIAL	BRONZE	
NOMINAL DIAMETER "A"	8.00 IN.	
NUT LENGTH "B"	7.00 IN.	
THREAD LENGTH "C"	2.000 IN.	
THREAD SIZE	7.8478 UN	
FLANGE PART NUMBER	FL7847	
FLANGE DIAMETER "D"	14.00 IN	
FLANGE THICKNESS "E"	2.020 IN.	
FLANGE HOLE DIAMETER "F"	1.125 IN.	
NUMBER OF HOLES IN FLANGE "G"	6	
FLANGE BOLT CIRCLE "H"	12.000 IN.	
FLANGE MATERIAL	BLACK OXIDE COATED STEEL	