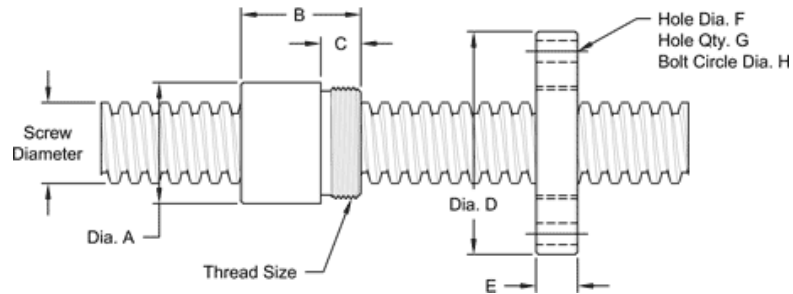


7/8 - 2 DOUBLE LEAD ACME MACHINE SCREW

Available in both alloy steel and stainless steel with a corresponding aluminum bronze nut. Right hand and left hand threads are available.

MACHINE SCREW JACK SPECIFICATIONS	RH	LH
ALLOY STEEL SCREW PART NO.	AS 075 R 020 A	AS 075 L 020 A
THREAD FORM	ACME	
SCREW DIAMETER (TURNS / INCH)	3/45	
PITCH / LEAD	0.200 IN.	
ROOT DIAMETER	0.502 IN.	
SCREW WEIGHT (LB. / FT.)	1.2	
TORQUE TO RAISE 1 POUND	0.075 IN.- LB.	
MAXIMUM SCREW LENGTH	12 FEET	

NUT AND FLANGE SPECIFICATIONS



NUT SPECIFICATIONS	RH	LH
NUT PART NO.	AN 075 R 020 B	AN 075 L 020 B
NUT WITH FLANGE PART NO.	AF 075 R 020	AF 075 L 020
DYNAMIC LOAD CAPACITY (LBS.)	2,812	
STATIC LOAD CAPACITY (LBS.)	9,000	
EFFICIENCY	43.6%	
MATERIAL	BRONZE	
NOMINAL DIAMETER "A"	1.12 IN.	
NUT LENGTH "B"	1.25 IN.	
THREAD LENGTH "C"	0.50 IN.	
THREAD SIZE	1.000 18 UN	
FLANGE PART NO.	FL1000	
FLANGE DIAMETER "D"	2.63 IN.	
FLANGE THICKNESS "E"	0.53 IN.	
FLANGE HOLE DIAMETER "F"	0.266 IN.	
NUMBER OF HOLES IN FLANGE "G"	4	
FLANGE BOLT CIRCLE "H"	2.090 IN.	
FLANGE MATERIAL	BLACK OXIDE COATED STEEL	