

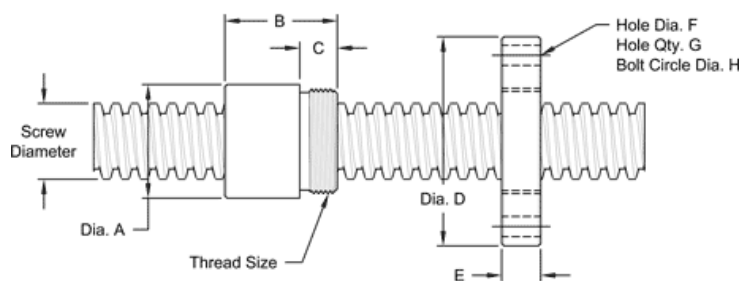
6" - 1 1/3 SINGLE LEAD ACME MACHINE SCREW

Available in both alloy steel and stainless steel with a corresponding aluminum bronze nut.
Right hand and left hand threads are available.

MACHINE SCREW SPECIFICATIONS	RH	LH
ALLOY STEEL SCREW PART NO.	AS 600 R 075 A	AS 600 L 075 A
STAINLESS STEEL SCREW PART NO.	AS 600 R 075 S	AS 600 L 075 S
THREAD FORM	ACME	
SCREW DIAMETER - TURNS/INCH	6" - 1 1/3	
PITCH/LEAD	0.750 IN.	
ROOT DIAMETER	5.169 IN.	
SCREW WEIGHT (LB./FT.)	87	
TORQUE TO RAISE 1 POUND	0.485 IN.LB.	
MAXIMUM SCREW LENGTH	20 FEET*	

*12 feet for stainless steel stock

NUT AND FLANGE SPECIFICATIONS



NUT SPECIFICATIONS	RH	LH
NUT PART NO.	AN 600 R 075 B	AN 600 L 075 B
NUT WITH FLANGE PART NO.	AF 600 R 075	AF 600 L 075
DYNAMIC LOAD CAPACITY (LBS.)	150,000	
STATIC LOAD CAPACITY (LBS.)	470,000	
EFFICIENCY	25.4%	
MATERIAL	BRONZE	
NOMINAL DIAMETER "A"	8.00 IN.	
NUT LENGTH "B"	7.00 IN.	
THREAD LENGTH "C"	2.000 IN.	
THREAD SIZE	7.8478 UN	
FLANGE PART NUMBER	FL7847	
FLANGE DIAMETER "D"	14.00 IN	
FLANGE THICKNESS "E"	2.020 IN.	
FLANGE HOLE DIAMETER "F"	1.125 IN.	
NUMBER OF HOLES IN FLANGE "G"	6	
FLANGE BOLT CIRCLE "H"	12.000 IN.	
FLANGE MATERIAL	BLACK OXIDE COATED STEEL	