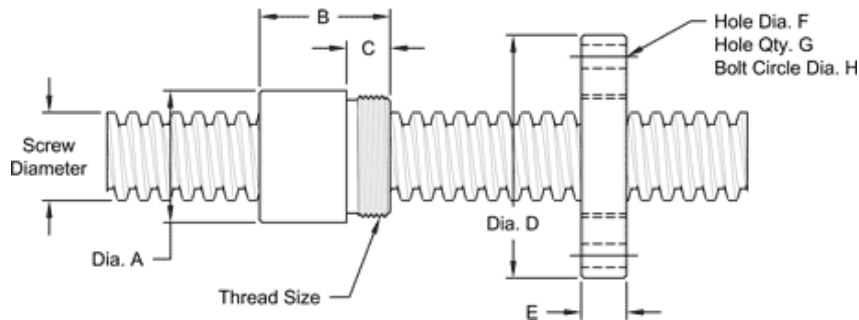


# 5/8 - 4 DOUBLE LEAD STUB ACME MACHINE SCREW

Available in stainless steel with a corresponding aluminum bronze nut.  
Both right hand and left hand threads are available.

MACHINE SCREW SPECIFICATIONS	RH	LH
STAINLESS STEEL SCREW PART NO.	SS 063 R 025 S	SS 063 L 025 S
THREAD FORM	STUB ACME	
SCREW DIAMETER TURNS / INCH	5/8 - 4	
PITCH / LEAD	0.125 IN./0.250 IN.	
ROOT DIAMETER	0.515 IN.	
SCREW WEIGHT (LB. / FT.)	0.85	
TORQUE TO RAISE 1 POUND	0.079 IN.- LB.	
MAXIMUM SCREW LENGTH	12 FEET	

## NUT AND FLANGE SPECIFICATIONS



NUT SPECIFICATIONS	RH	LH
NUT PART NO.	SN 063 R 025 B	SN 063 L 025 B
NUT WITH FLANGE PART NO.	SF 063 R 025	SF 063 L 025
DYNAMIC LOAD CAPACITY (LBS.)	1,953	
STATIC LOAD CAPACITY (LBS.)	6,250	
EFFICIENCY	51.4%	
MATERIAL	BRONZE	
NOMINAL DIAMETER "A"	1.12 IN.	
NUT LENGTH "B"	1.00 IN.	
THREAD LENGTH "C"	0.50 IN.	
THREAD SIZE	0.93716 UN	
FLANGE PART NO.	FL0937	
FLANGE DIAMETER "D"	2.60 IN.	
FLANGE THICKNESS "E"	0.53 IN.	
FLANGE HOLE DIAMETER "F"	0.266 IN.	
NUMBER OF HOLES IN FLANGE "G"	4	
FLANGE BOLT CIRCLE "H"	2.090 IN.	
FLANGE MATERIAL	BLACK OXIDE COATED STEEL	