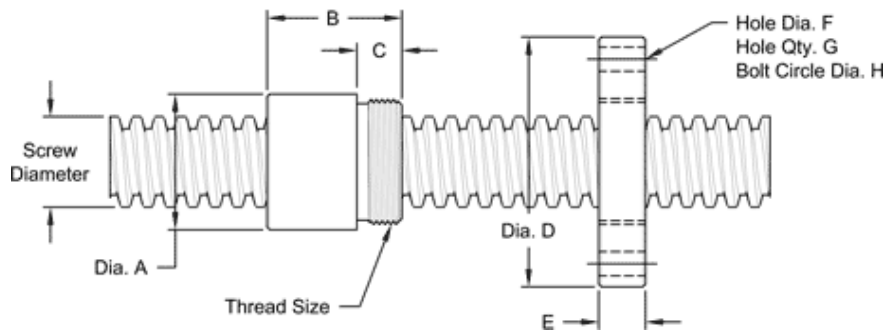


# 5/8 - 2 DOUBLE LEAD STUB ACME MACHINE SCREW

Available in alloy steel with a corresponding aluminum bronze nut.  
Right hand threads are available.

MACHINE SCREW SPECIFICATIONS	RH
ALLOY STEEL SCREW PART NO.	SS 063 R 050 A
THREAD FORM	STUB ACME
SCREW DIAMETER (TURNS / INCH)	5/8 - 2
PITCH / LEAD	0.250 IN./ 0.500 IN.
ROOT DIAMETER	0.426 IN.
SCREW WEIGHT (LB./FT.)	0.85
TORQUE TO RAISE 1 POUND	0.120 IN.- LB..
MAXIMUM SCREW LENGTH	12 FEET

## NUT AND FLANGE SPECIFICATIONS



NUT SPECIFICATIONS	RH
NUT PART NO.	SN 063 R 050 B
NUT WITH FLANGE PART NO.	SF 063 R 050
DYNAMIC CAPACITY (LBS.)	1,953
STATIC CAPACITY (LBS.)	6,250
EFFICIENCY	67.6%
MATERIAL	BRONZE
NOMINAL DIAMETER "A"	1.12 IN.
NUT LENGTH "B"	1.00 IN.
THREAD LENGTH "C"	0.50 IN.
THREAD SIZE	0.93716 UN
FLANGE PART NO.	FL0937
FLANGE DIAMETER "D"	2.60 IN.
FLANGE THICKNESS "E"	0.53 IN.
FLANGE HOLE DIAMETER "F"	0.266 IN.
NUMBER OF HOLES IN FLANGE "G"	4
FLANGE BOLT CIRCLE "H"	2.090 IN.
FLANGE MATERIAL	BLACK OXIDE COATED STEEL