

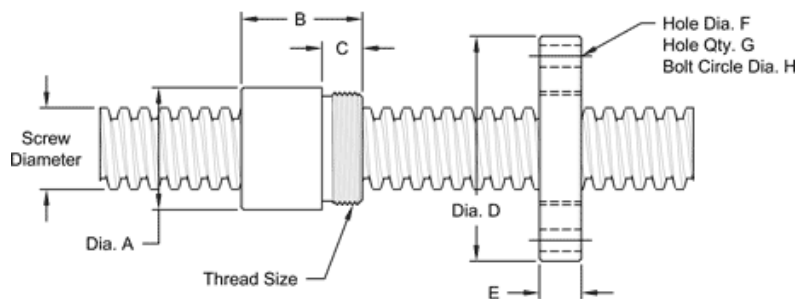
# 3 1/2" - 1 1/2 SINGLE LEAD ACME MACHINE SCREW

Available in both alloy steel and stainless steel with a corresponding aluminum bronze nut.  
Right hand and left hand threads are available.

MACHINE SCREW SPECIFICATIONS	RH	LH
ALLOY STEEL SCREW PART NO.	AS 350 R 067 A	AS 350 L 067 A
STAINLESS STEEL SCREW PART NO.	AS 350 R 067 S	AS 350 L 067 S
THREAD FORM		ACME
SCREW DIAMETER - TURNS/INCH		3 1/2" - 1 1/2
PITCH/LEAD		0.667 IN.
ROOT DIAMETER		2.760 IN.
SCREW WEIGHT (LB./FT.)		30
TORQUE TO RAISE 1 POUND		0.313 IN.LB.
MAXIMUM SCREW LENGTH		20 FEET*

\*12 feet for stainless steel stock

## NUT AND FLANGE SPECIFICATIONS



NUT SPECIFICATIONS	RH	LH
NUT PART NO.	AN 350 R 067 B	AN 350 L 067 B
NUT WITH FLANGE PART NO.	AF 350 R 067	AF 350 L 067
DYNAMIC LOAD CAPACITY (LBS.)		60,000
STATIC LOAD CAPACITY (LBS.)		200,000
EFFICIENCY		34.8%
MATERIAL		BRONZE
NOMINAL DIAMETER "A"		4.50 IN.
NUT LENGTH "B"		4.50 IN.
THREAD LENGTH "C"		2.000 IN.
THREAD SIZE		4.32512 UN
FLANGE PART NUMBER		FL4325
FLANGE DIAMETER "D"		7.38 IN.
FLANGE THICKNESS "E"		2.020 IN.
FLANGE HOLE DIAMETER "F"		0.781 IN.
NUMBER OF HOLES IN FLANGE "G"		6
FLANGE BOLT CIRCLE "H"		6.250 IN.
FLANGE MATERIAL		BLACK OXIDE COATED STEEL