

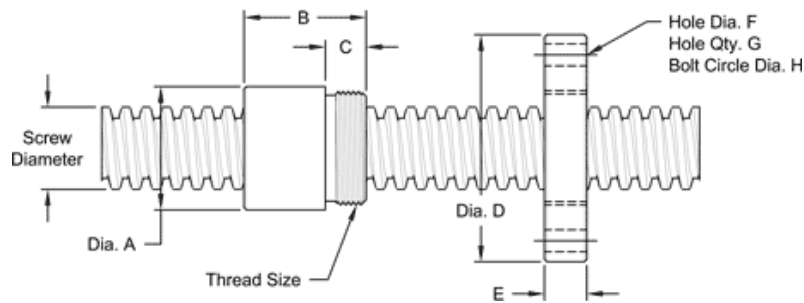
2" - 2 SINGLE LEAD ACME MACHINE SCREW

Available in both alloy steel and stainless steel with a corresponding aluminum bronze nut.
Right hand and left hand threads are available.

MACHINE SCREW SPECIFICATIONS	RH	LH
ALLOY STEEL SCREW PART NO.	AS 200 R 050 A	AS 200 L 050 A
STAINLESS STEEL SCREW PART NO.	AS 200 R 050 S	AS 200 L 050 S
THREAD FORM	ACME	
SCREW DIAMETER - TURNS/INCH	2" - 2	
PITCH/LEAD	0.500 IN.	
ROOT DIAMETER	1.435 IN.	
SCREW WEIGHT (LB./FT.)	8.1	
TORQUE TO RAISE 1 POUND	0.195 IN.LB.	
MAXIMUM SCREW LENGTH	20 FEET*	

* 12 feet for stainless steel stock

NUT AND FLANGE SPECIFICATIONS



NUT SPECIFICATIONS	RH	LH
NUT PART NUMBER	AN 200 R 050 B	AN 200 R 050 B
NUT WITH FLANGE	AF 20 0R 050	AF 200 R 050
DYNAMIC LOAD CAPACITY (LBS.)	20,000	
STATIC LOAD CAPACITY (LBS.)	64,000	
EFFICIENCY	41.9%	
MATERIAL	BRONZE	
NOMINAL DIAMETER "A"	2.75 IN.	
NUT LENGTH "B"	2.75 IN.	
THREAD LENGTH "C"	0.880 IN.	
THREAD SIZE	2.54818 UN	
FLANGE PART NUMBER	FL2548	
FLANGE DIAMETER "D"	4.94 IN.	
FLANGE THICKNESS "E"	0.895 IN.	
FLANGE HOLE DIAMETER "F"	0.531 IN.	
NUMBER OF HOLES IN FLANGE "G"	4	
FLANGE BOLT CIRCLE "H"	4.062 IN.	
FLANGE MATERIAL	BLACK OXIDE COATED STEEL	