

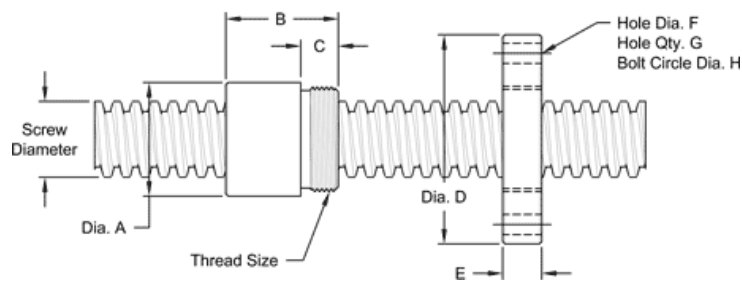
2 1/4" - 4 SINGLE LEAD ACME MACHINE SCREW

Available in both alloy steel and stainless steel with a corresponding aluminum bronze nut.
Right hand and left hand threads are available.

MACHINE SCREW SPECIFICATIONS	RH	LH
ALLOY STEEL SCREW PART NO.	AS 225 R 025 A	AS 225 L 025 A
STAINLESS STEEL SCREW PART NO.	AS 225 R 025 S	AS 225 L 025 S
THREAD FORM	ACME	
SCREW DIAMETER - TURNS/INCH	2 1/4" - 4	
PITCH/LEAD	0.250 IN.	
ROOT DIAMETER	1.944 IN.	
SCREW WEIGHT (LB/FT)	11.2	
TORQUE TO RAISE 1 POUND	0.178 IN.LB.	
MAXIMUM SCREW LENGTH	20 FEET*	

* 12 feet for stainless steel stock

NUT AND FLANGE SPECIFICATIONS



NUT SPECIFICATIONS	RH	LH
NUT PART NO.	AN 225 R 025 B	AN 225 L 025 B
NUT WITH FLANGE PART NO.	AF 225 R 025	AF 225 L 025
DYNAMIC LOAD CAPACITY (LBS)	30,000	
STATIC LOAD CAPACITY (LBS)	81,000	
EFFICIENCY	23.1%	
MATERIAL	BRONZE	
NOMINAL DIAMETER "A"	3.38 IN.	
NUT LENGTH "B"	3.06 IN.	
THREAD LENGTH "C"	1.560 IN.	
THREAD SIZE	3.13712 UN	
FLANGE PART NUMBER	FL3137	
FLANGE DIAMETER "D"	5.38 IN.	
FLANGE THICKNESS "E"	1.580 IN.	
FLANGE HOLE DIAMETER "F"	0.656 IN.	
NUMBER OF HOLES IN FLANGE "G"	6	
FLANGE BOLT CIRCLE "H"	4.375 IN.	
FLANGE MATERIAL	BLACK OXIDE COATED STEEL	