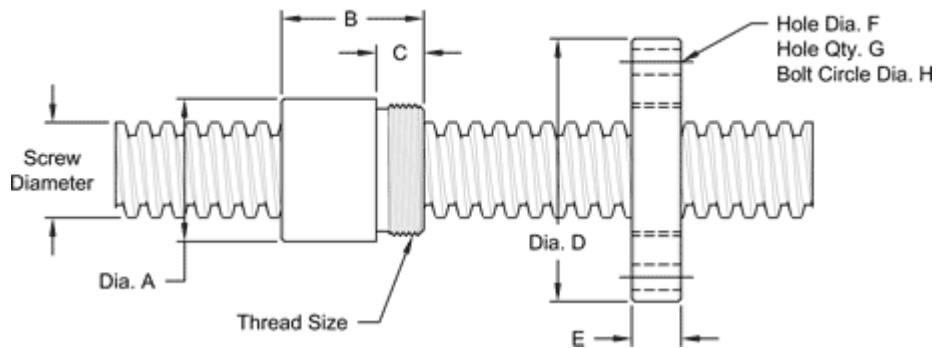


1/2 - 8 STUB ACME MACHINE SCREW

Available in stainless steel with a corresponding aluminum bronze nut.
Right hand threads are available.

MACHINE SCREW SPECIFICATIONS	RH
STAINLESS STEEL SCREW PART NO.	SS 050 R 013 S
THREAD FORM	STUB ACME
SCREW DIAMETER TURNS / INCH	1/2 - 8
PITCH / LEAD	0.125 IN.
ROOT DIAMETER	0.38 IN.
SCREW WEIGHT (LB. / FT.)	0.53
TORQUE TO RAISE 1 POUND	0.050 IN - LB
MAXIMUM SCREW LENGTH	12 FEET

NUT AND FLANGE SPECIFICATIONS



NUT SPECIFICATIONS	RH
NUT PART NO.	SN 050 R 013 B
NUT WITH FLANGE PART NO.	SF 050 R 013
DYNAMIC LOAD CAPACITY (LBS)	1,250
STATIC LOAD CAPACITY (LBS)	4,000
EFFICIENCY	40.5%
MATERIAL	BRONZE
NOMINAL DIAMETER "A"	1.12 IN.
NUT LENGTH "B"	0.75 IN.
THREAD LENGTH "C"	0.50 IN.
THREAD SIZE	0.93716 UN
FLANGE PART NO.	FL0937
FLANGE DIAMETER "D"	2.60 IN.
FLANGE THICKNESS "E"	0.53 IN.
FLANGE HOLE DIAMETER "F"	0.266 IN.
NUMBER OF HOLES IN FLANGE "G"	4
FLANGE BOLT CIRCLE "H"	2.090 IN.
FLANGE MATERIAL	STEEL