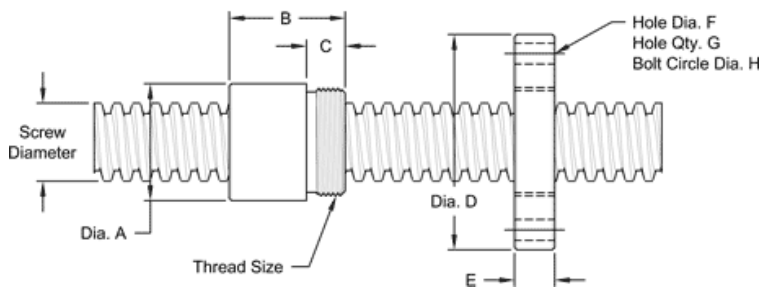


1" - 2 DOUBLE LEAD ACME MACHINE SCREW

Available in both alloy steel and stainless steel with a corresponding aluminum bronze nut.
Right hand and left hand threads are available.

MACHINE SCREW SPECIFICATIONS	RH	LH
ALLOY STEEL SCREW PART NO.	AS 100 R 050 A	AS 100 L 050 A
STAINLESS STEEL SCREW PART NO.	AS 100 R 050 S	AS 100 L 050 S
THHREAD FORM	ACME	
SCREW DIAMETER - TURNS / INCH	1"2	
PITCH / LEAD	0.250 IN. /0.500 IN.	
ROOT DIAMETER	0.699 IN.	
SCREW WEIGHT ((LB./FT.)	2.2	
TORQUE TO RAISE 1 POUND	0.140 IN. LB.	
MAXIMUM SCREW LENGTH	12 FEET	

NUT AND FLANGE SPECIFICATIONS



NUT SPECIFICATIONS	RH	LH
NUT PART NUMBER	AN 100 R 050 B	AN 100 L 050 B
NUT WITH FLANGE	AF 100 R 050	AF 100 L 050
DYNAMIC LOAD CAPACITY (LBS.)	5,000	
STATIC LOAD CAPACITY (LBS.)	16,000	
EFFICIENCY	58.20%	
MATERIAL	BRONZE	
NOMINAL DIAMETER "A"	1.50 IN.	
NUT LENGTH "B"	1.50 IN.	
THREAD LENGTH "C"	0.50 IN.	
THREAD SIZE	1.37516 UN	
FLANGE PART NO.	FL1375	
FLANGE DIAMETER "D"	2.75 IN.	
FLANGE THICKNESS "E"	0.52 IN.	
FLANGE HOLE DIAMETER "F"	0.266 IN.	
NUMBER OF HOLES IN FLANGE "G"	4	
FLANGE BOLT CIRCLE "H"	2.260 IN.	
FLANGE MATERIAL	BLACK OXIDE COATED STEEL	