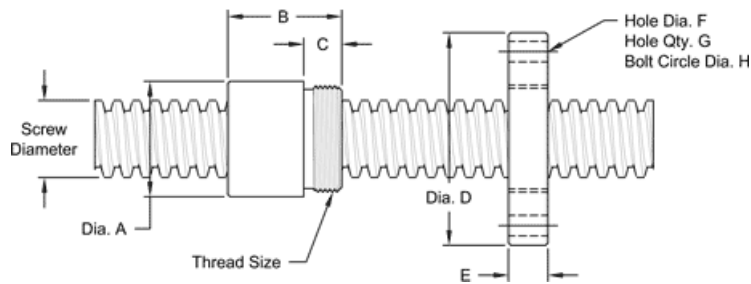


1 1/2" - 2 2/3 SINGLE LEAD ACME MACHINE SCREW

Available in both alloy steel and stainless steel with a corresponding aluminum bronze nut.
Right hand and left hand threads are available.

MACHINE SCREW SPECIFICATIONS	RH	LH
ALLOY STEEL SCREW PART NO.	AS 150 R 038 A	AS 150 L 038 A
STAINLESS STEEL SCREW PART NO.	AS 150 R 038 S	AS 150 L 038 S
THREAD FORM	ACME	
SCREW DIAMETER - TURNS / INCH	1 1/2" - 2 2/3	
PITCH / LEAD	0.375 IN.	
ROOT DIAMETER	1.066 IN.	
SCREW WEIGHT (LB./FT.)	4.6	
TORQUE TO RAISE 1 POUND	0.146 IN.LB.	
MAXIMUM SCREW LENGTH	20 FEET*	
*12 FEET FOR STAINLESS STEEL STOCK		

NUT AND FLANGE SPECIFICATIONS



NUT SPECIFICATIONS	RH	LH
NUT PART NO.	AN 150 R 038 B	AN 150 L 038 B
NUT WITH FLANGE PART NO.	AF 150 R 038	AF 150 L 038
DYNAMIC LOAD CAPACITY (LBS.)	11,250	
STATIC LOAD CAPACITY (LBS.)	36,000	
EFFICIENCY	41.8%	
MATERIAL	BRONZE	
NOMINAL DIAMETER "A"	2.12 IN.	
NUT LENGTH "B"	2.30 IN.	
THREAD LENGTH "C"	0.812 IN.	
THREAD SIZE	1.96718 UN	
FLANGE PART NO.	FL1967	
FLANGE DIAMETER "D"	4.20 IN.	
FLANGE THICKNESS "E"	0.832 IN.	
FLANGE HOLE DIAMETER "F"	0.397 IN.	
NUMBER OF HOLES IN FLANGE "G"	4	
FLANGE BOLT CIRCLE "H"	3.440 IN.	
FLANGE MATERIAL	BLACK OXIDE COATED STEEL	