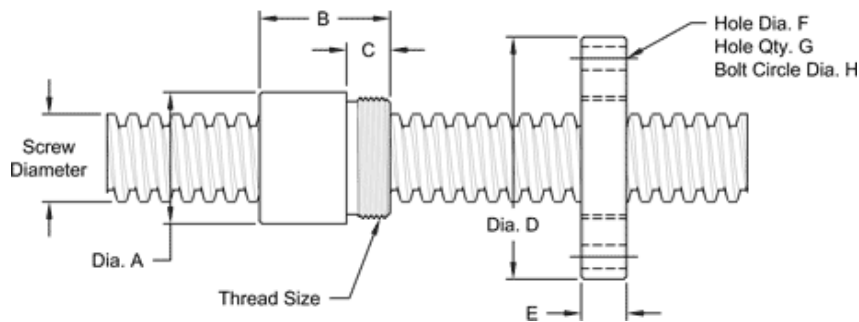


# 1" - 10 SINGLE LEAD ACME MACHINE SCREW

Available in both alloy steel and stainless steel with a corresponding aluminum bronze nut.  
Right hand and left hand threads are available.

MACHINE SCREW SPECIFICATIONS	RH	LH
ALLOY STEEL SCREW PART NO.	AS 100 R 010 A	AS 100 L 010 A
STAINLESS STEEL SCREW PART NO.	AS 100 R 010 S	AS 100 L 010 S
THREAD FORM	ACME	
SCREW DIAMETER - TURNS / INCH	110	
PITCH / LEAD	0.100 IN.	
ROOT DIAMETER	0.857 IN.	
SCREW WEIGHT (LB./FT)	2.1	
TORQUE TO RAISE 1 POUND	0.078 IN.LB.	
MAXIMUM SCREW LENGTH	12 FEET	

## NUT AND FLANGE SPECIFICATIONS



NUT SPECIFICATIONS	RH	LH
NUT PART NO.	AN 100 R 010 B	AN 100 L 010 B
NUT WITH FLANGE PART NO.	AF100 R 010	AF 100 L 010
DYNAMIC LOAD CAPACITY (LBS.)	5,000	
STATIC LOAD CAPACITY (LBS.)	16,000	
EFFICIENCY	21.2%	
MATERIAL	BRONZE	
NOMINAL DIAMETER "A"	1.50 IN.	
NUT LENGTH "B"	1.50 IN.	
THREAD LENGTH "C"	0.50 IN.	
THREAD SIZE	1.37516 UN	
FLANGE PART NO.	FL1375	
FLANGE DIAMETER "D"	2.75 IN.	
FLANGE THICKNESS "E"	0.52 IN.	
FLANGE HOLE DIAMETER "F"	0.266 IN.	
NUMBER OF HOLES IN FLANGE "G"	4	
FLANGE BOLT CIRCLE "H"	2.260 IN.	
FLANGE MATERIAL	BLACK OXIDE COATED STEEL	