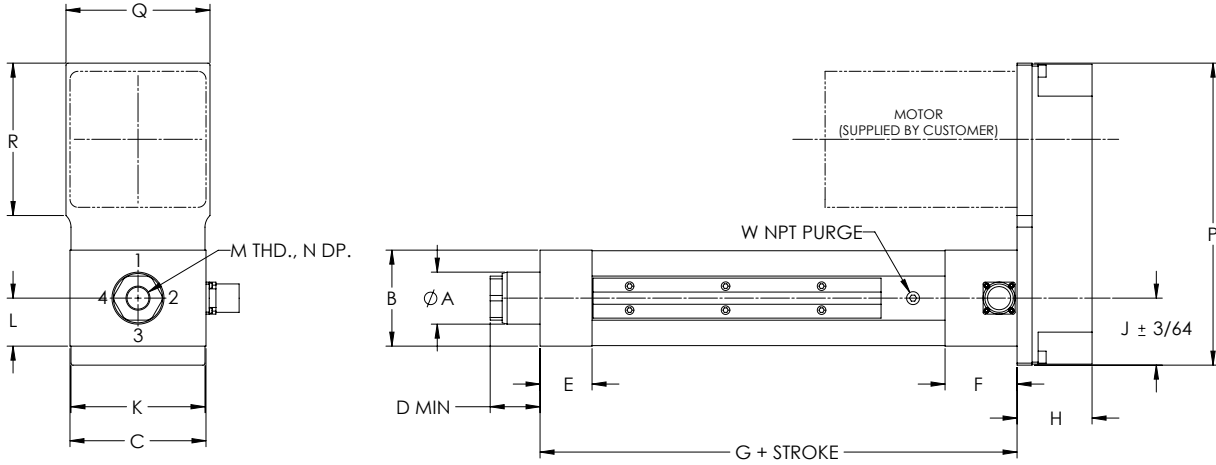


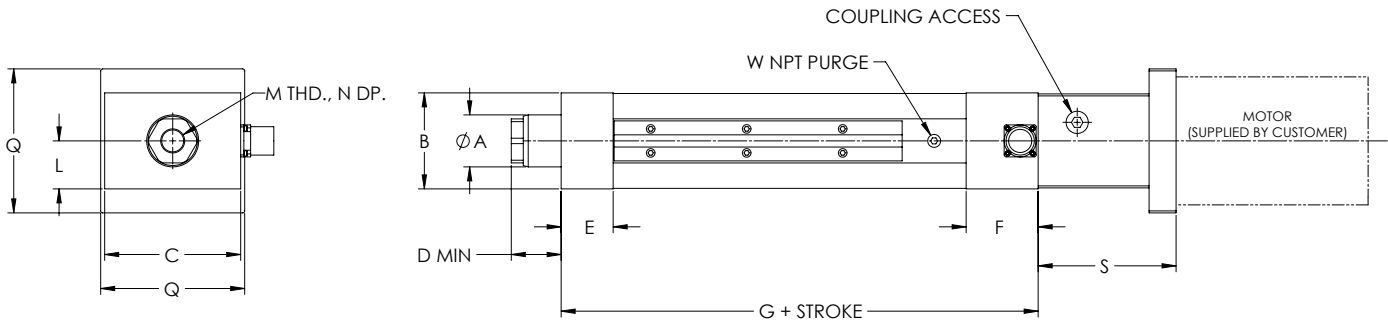
DIMENSIONED DRAWINGS FOR THE ELIMINATOR HDL ACTUATOR

Dimensions are in inches and are subject to change without notice.

U-Parallel Offset Motor Configuration



L-Inline Motor Configuration



"S" length may vary depending on motor or gearbox.

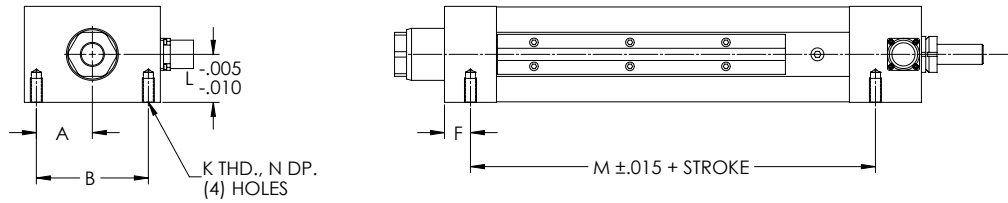
HDL U-Parallel Offset and L-Inline Motor Configuration

Model	A	B	C	D	E	F	G	H	J	K	L	M	N	P	Q	R	S	W
HDL201	1.13	2.00	3.00	1.04	1.00	1.75	6.34	1.63	1.48	2.97	1.00	1/2-20	1.00	6.30	2.97	N/A	2.66	1/8
HDL302	1.63	3.00	4.25	1.41	1.63	2.25	8.91	2.34	2.09	4.19	1.50	3/4-16	1.00	9.44	4.50	4.75	4.31	1/8
HDL304	1.63	3.00	4.25	1.56	1.63	2.25	8.91	2.34	2.09	4.19	1.50	3/4-16	1.00	9.44	4.50	4.75	4.31	1/8
HDL404	2.25	4.00	5.50	1.88	2.00	2.63	10.22	2.63	2.69	5.38	2.00	3/4-16	1.00	13.00	6.00	6.94	5.00	1/4
HDL406	2.25	4.00	5.50	1.79	2.00	2.63	10.22	2.63	2.69	5.38	2.00	3/4-16	1.00	13.00	6.00	6.94	5.00	1/4
HDL508	3.00	5.00	7.75	2.56	2.50	3.00	13.38	4.03	3.81	7.63	2.50	1 1/4-12	1.63	17.19	8.38	9.19	6.75	3/8
HDL516	3.00	5.00	7.75	2.56	2.50	3.00	14.38	4.03	3.81	7.63	2.50	1 1/4-12	1.63	17.19	8.38	9.19	6.75	3/8
HDL618	3.50	6.00	8.50	2.75	3.00	4.00	15.00	4.13	4.13	8.38	3.00	1 1/4-12	1.63	17.88	9.00	9.19	7.25	1/2
HDL625	4.00	6.00	8.50	2.75	3.00	4.00	17.75	4.13	4.13	8.38	3.00	1 1/4-12	1.63	17.88	9.00	9.19	7.25	1/2
HDL740	4.25	7.00	10.00	3.77	3.50	5.56	20.02	5.44	4.94	9.88	3.50	2-12	3.00	19.88	10.94	10.05	10.17	1/2

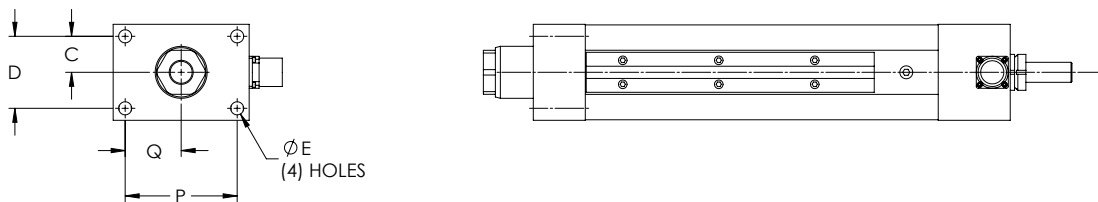
DIMENSIONED DRAWINGS FOR THE ELIMINATOR HDL ACTUATOR

Dimensions are in inches and are subject to change without notice.

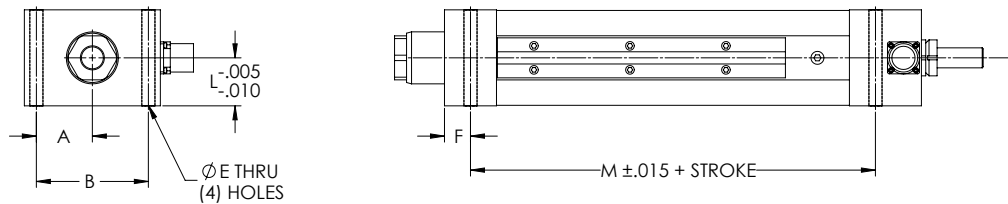
Bottom Mount Dimensions



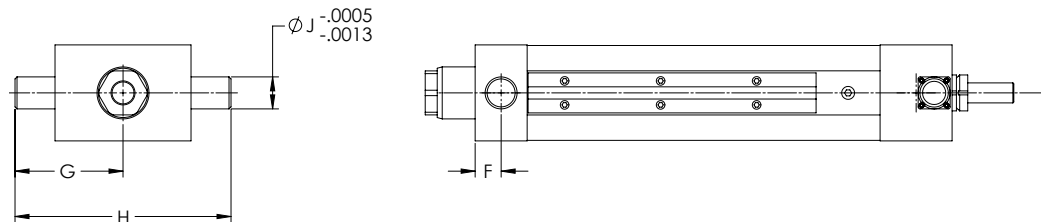
Front Flange Dimensions



Foot Mount Dimensions



Trunnion Mount Dimensions



HDL Mounting Dimensions (Bottom Mount, Front Flange, Foot Mount, Trunnion Mount)

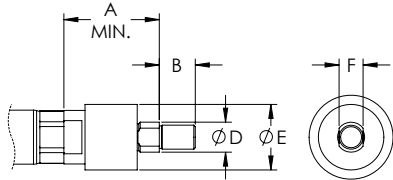
Model	A	B	C	D	E	F	G	H	J	K	L	M	N	P	Q
HDL201	1.13	2.25	0.69	1.38	0.34	0.49	2.24	4.48	0.50	5/16-18	0.99	4.63	0.63	2.38	1.19
HDL302	1.75	3.50	1.13	2.25	0.41	0.81	3.38	6.75	1.00	3/8-16	1.50	6.66	0.75	3.50	1.75
HDL304	1.75	3.50	1.13	2.25	0.41	0.81	3.38	6.75	1.00	3/8-16	1.50	6.66	0.75	3.50	1.75
HDL404	2.19	4.38	1.44	2.88	0.69	1.00	4.50	9.00	1.25	5/8-11	2.00	7.59	1.00	4.38	2.19
HDL406	2.19	4.38	1.44	2.88	0.69	1.00	4.50	9.00	1.25	5/8-11	2.00	7.59	1.00	4.38	2.19
HDL508	3.13	6.25	1.75	3.50	0.81	1.25	6.25	12.50	1.50	3/4-10	2.50	10.63	1.25	6.25	3.13
HDL516	3.13	6.25	1.75	3.50	0.81	1.25	6.25	12.50	1.50	3/4-10	2.50	10.63	1.25	6.25	3.13
HDL618	3.31	6.63	2.00	4.00	1.06	1.50	7.13	14.25	2.00	1-8	3.00	11.00	1.63	6.63	3.31
HDL625	3.31	6.63	2.00	4.00	1.06	1.50	7.13	14.25	2.00	1-8	3.00	13.75	1.63	6.63	3.31
HDL740	4.00	8.00	2.50	5.00	1.06	1.75	7.88	15.75	2.00	1-8	3.50	14.96	2.00	8.00	4.00

DIMENSIONED DRAWINGS FOR THE ELIMINATOR HDL ACTUATOR

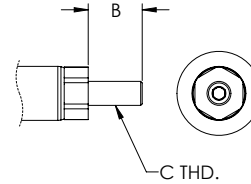
Dimensions are in inches and are subject to change without notice.

Rod End Options

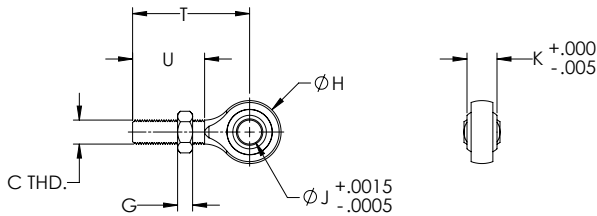
Self-Aligning Coupler



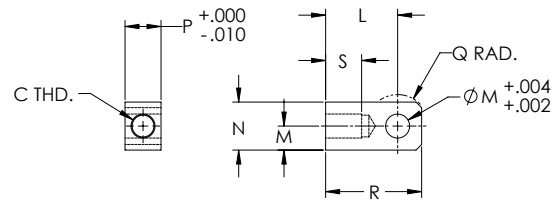
Male Thread



Spherical Rod Eye



Female Eye



HDL Rod End Dimensions

Model	A	B	C	D	E	F	G	H	J	K	L	M	N	P	Q	R	S	T	U
HDL201	2.00	0.75	1/2-20	0.63	1.37	0.50	0.31	1.31	0.50	0.63	1.50	0.50	1.00	0.75	0.50	2.00	0.75	2.44	1.50
HDL302	2.31	1.13	3/4-16	0.97	2.00	0.75	0.42	1.75	0.75	0.88	2.06	0.75	1.50	1.25	0.75	2.81	1.13	2.88	1.75
HDL304	2.31	1.13	3/4-16	0.97	2.00	0.75	0.42	1.75	0.75	0.88	2.06	0.75	1.50	1.25	0.75	2.81	1.13	2.88	1.75
HDL404	2.31	1.13	3/4-16	0.97	2.00	0.75	0.42	1.75	0.75	0.88	2.06	0.75	1.50	1.25	0.75	2.81	1.13	2.88	1.75
HDL406	2.31	1.13	3/4-16	0.97	2.00	0.75	0.42	1.75	0.75	0.88	2.06	0.75	1.50	1.25	0.75	2.81	1.13	2.88	1.75
HDL508	2.94	1.63	1 1/4-12	1.45	3.13	1.25	0.72	2.75	1.00	1.38	3.44	1.38	2.75	2.00	1.38	4.81	2.00	4.13	2.13
HDL516	2.94	1.63	1 1/4-12	1.45	3.13	1.25	0.72	2.75	1.00	1.38	3.44	1.38	2.75	2.00	1.38	4.81	2.00	4.13	2.13
HDL618	2.94	1.63	1 1/4-12	1.45	3.13	1.25	0.72	2.75	1.00	1.38	3.44	1.38	2.75	2.00	1.38	4.81	2.00	4.13	2.13
HDL625	2.94	1.63	1 1/4-12	1.45	3.13	1.25	0.72	2.75	1.00	1.38	3.44	1.38	2.75	2.00	1.38	4.81	2.00	4.13	2.13