

EDRIVE[®]

A C T U A T O R S

A JOYCE/DAYTON BRAND

Electric Heavy-Duty Linear Actuators





Pioneering Precision. Powering Progress.

Since 1980, EDrive has been a leader in rugged, high-precision electric linear actuators. We built our legacy on the toughest industrial applications where performance and durability are paramount.

Today, EDrive is an exclusive Joyce/Dayton brand. This partnership unites decades of specialized engineering experience, reinforcing our commitment to superior linear motion solutions.

As industries demand cleaner, more precise control, more machine builders are replacing hydraulic and pneumatic systems with our advanced electric actuators. We deliver the power and precision needed to build for the future.

BENEFITS OF ELECTRIC ACTUATION INCLUDE:

- Cleaner, quieter, and more energy efficient
- Improved performance
- Less maintenance required
- Higher accuracy and repeatability
- More flexibility and scalability
- Higher speed and force
- Greater system stiffness
- Lower operating costs

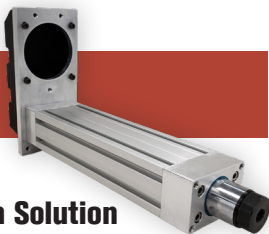
PRODUCT FEATURES INCLUDE:

- Built to fit the motor of your choice
- Capacities up to 100,000 lbs
- Velocities up to 65 in/sec
- Inline and Parallel Offset configurations
- Integrated Load Cell for bi-directional feedback
- 316 Stainless Steel actuators available with **IP69K** Rated Sealed Chamber Design

Industry leading response times and rapid delivery!

With a strong reputation for customer satisfaction, quality, and performance, EDrive is leading the way as a trusted, linear motion solutions provider.

UA™ Universal Series Actuator



Cost Effective, General Purpose, Automation Solution

Universal Actuators UA Series are designed to easily drop into automation applications. These compact actuators feature an aluminum extrusion cylinder designed with industry-standard T-slots for quick mounting. This cost-effective actuator provides a high speed, high-precision solution for automation applications.

FEATURES:

- Rated thrust up to 500 lbs
- Velocity up to 50 in/sec, Stroke lengths up to 24 inches
- Sealed from contamination (IP54)
- Adjustable limit switches available
- Chrome piston with internal anti-rotation
- Designed with industry standard T-slot
- Multiple motor/actuator mounting configurations available

Tac VT™ Actuator



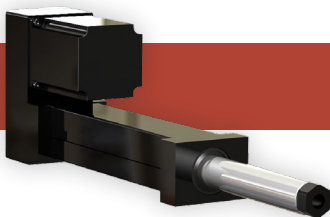
Cost-Effective, High Quality, High Speed, High Force

Tac VT series linear actuators deliver high thrust loads at fast velocities, while offering high quality, high speed and rugged durability. These units are constructed using aluminum housings with steel components, chrome plated heavy wall steel pistons, and steel/bronze anti-rotation components.

FEATURES:

- Rated thrust up to 2,000 lbs
- Piston with rugged anti-rotation feature
- Velocities up to 40 in/sec, Stroke lengths up to 24 inches
- Multiple motor/actuator mounting configurations available
- Limit switches available
- Easy to lubricate in the field
- Sealed chamber design with purge provision

Tac LS™ Actuator



Long Stroke, High Speed, High Force

Tac LS series linear actuators are ideal for long stroke applications that must deliver high thrust loads at faster velocities. These high quality, durable linear actuators, are constructed using aluminum housings, alloy cylinders and chrome plated heavy wall steel pistons, and steel/bronze anti-rotation components.

FEATURES:

- Long stroke with thrust up to 2,000 lbs
- Piston with rugged anti-rotation feature
- Velocities up to 40 in/sec, Stroke lengths from 24 to 60 inches
- Multiple motor/actuator mounting configurations available
- Limit switches available
- Easy to lubricate in the field
- Sealed chamber design with purge provision

Tac VP™ 316 Stainless Steel Actuator



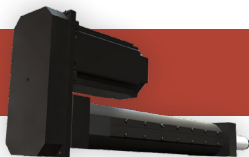
Stainless Steel IP69K, High Quality, High Speed, High Force

Tac VP series stainless steel linear actuators deliver all the performance advantages of VT actuators with the added benefit of a 316 stainless steel housing. They are ideally suited for severe environments and caustic wash-down conditions.

FEATURES:

- 316 Stainless Steel Housing
- Rated thrust up to 2,000 lbs
- Piston with rugged anti-rotation feature
- Velocities up to 40 in/sec, Stroke lengths up to 24 inches
- Multiple motor/actuator mounting configurations available
- Limit switches available
- Easy to lubricate in the field
- Sealed chamber design

Eliminator SS™ Super Speed Linear Actuators



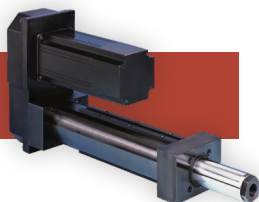
Heavy Duty, Super Speed, Precise Motion

Eliminator SS series linear actuators provide the ideal solution for applications that demand movement of high thrust loads at extremely high speeds. The combination of high thrust, fast actuation, and precision motion is provided in a durable actuator built on the heavy duty Eliminator platform and characterized by rugged steel construction and steel/bronze anti-rotation components.

FEATURES:

- Rated thrust up to 2,000 lbs
- Piston with rugged anti-rotation feature
- Velocities up to 40 in/sec, Stroke lengths up to 24 inches
- Multiple motor/actuator mounting configurations available
- Limit switches available
- Sealed chamber design with purge provision

Eliminator HD™ & HDL™ Heavy Duty Actuators



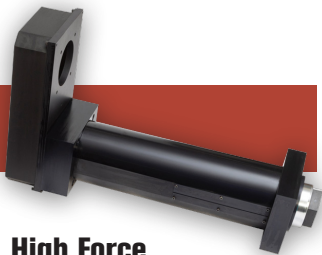
Heavy Duty, High Speed, High Force, High Precision

Eliminator HD and HDL series Heavy Duty linear actuators feature steel construction and provide strong, durable, and precise linear motion for industrial automation. These high capacity actuators can move heavy loads at high speeds resulting in high accuracy linear motion that is controllable, repeatable, and easy to adjust.

FEATURES:

- Rated thrusts up to 25,000 lbs
- Piston with durable anti-rotation feature
- Velocities up to 23 in/sec, Stroke lengths up to 48 inches
- Multiple motor/actuator mounting configurations available
- 0.002 in/ft standard lead accuracy
- 0.0005 in/ft optional lead accuracy available
- Limit switches available
- Zero backlash option available – HD model
- Integrated load cell option provides continuous bi-directional measurement of applied thrust – HDL model
- Sealed chamber design with purge provision

Eliminator SD™ Super Duty Actuators



Cost-Effective, High Quality, High Speed, High Force

Eliminator SD series Super Duty linear actuators feature steel construction and provide strong, durable, and precise linear motion for industrial automation with capacities up to 100,000 lbs. Achieve the perfect high precision/high load capacity solution when you combine your servomotor with this steel actuator.

FEATURES:

- Rated thrusts up to 100,000 lbs
- Rugged steel construction with durable anti-rotation feature
- Velocities up to 12 in/sec, Stroke lengths up to 48 inches
- Multiple motor/actuator mounting configurations available
- Limit switches available
- Sealed chamber design with purge provision

Eliminator SP™ & SPL™ 316 Stainless Steel Actuators



Stainless Steel IP69K, Heavy Duty, High Speed, High Force

The Eliminator SP & SPL series Heavy Duty linear actuators feature all the performance factors of the HD and HDL actuators with the added benefit of an IP69K rating and a contoured 316 stainless steel housing. They provide the perfect solution for food-grade applications where severe environments or caustic wash-down conditions are present. Ideal for food/packaging and medical applications.

FEATURES:

- Rated thrusts up to 25,000 lbs
- Piston with durable anti-rotation feature
- Velocities up to 23 in/sec, Stroke lengths up to 48 inches
- Multiple motor/actuator mounting configurations available
- 0.002 in/ft standard lead accuracy
- 0.0005 in/ft optional lead accuracy available
- Limit switches available
- Zero backlash option available – SP model
- Integrated load cell option provides continuous bi-directional measurement of applied thrust – SPL model
- Sealed chamber design with purge provision

Internal Load Cells

Can be added to Eliminator Series Actuators

EDrive manufactures Heavy-Duty linear actuators with Integrated Load Cells that deliver bi-directional force feedback for loads up to 100,000 lbs, providing an economical force measurement solution for precise applications.

Measure force in both directions!

FEATURES:

- Provide continuous mV/V output signal
- Accurate to within 0.05% of rated force
- Available in both inline and parallel offset mounting configurations
- Standard option for Eliminator Series actuators



We're your partner for standard or fully customized actuators and screw jack solutions up to 250 tons.

Contact us at: 1-937-294-6261

Joyce/Dayton Screw Jacks & Linear Actuators

Machine Screw Jacks
Ball Screw Jacks
ComDRIVE® Actuators
Metric Screw Jacks
Electric Cylinders
Integrated Actuators
Stainless Steels Screw Jacks
Bevel Gear® Jacks
Bevel Ball Actuators
Protective Boots
Limit Switches
System Accessories



| | UA SERIES | LS SERIES | | | | | VT SERIES / VP SERIES | | | | | SS454 SERIES | HD SERIES / SP SERIES | | | | | | | | | | SD SERIES | | |
|---------------|--------------|-----------|-------|-------|-------|-------|-----------------------|----------------|----------------|----------------|----------------|-----------------|-----------------------|----------------|----------------|----------------|----------------|----------------|----------------|----------------|----------------|-------|-----------|-------|-------|
| | UA2 | LS204 | LS209 | LS305 | LS310 | LS320 | VT204 VP204 | VT209 VP209 | VT305 VP305 | VT310 VP310 | VT320 VP320 | SS454 | HD201 SP201 | HD302 SP302 | HD304 SP304 | HD404 SP404 | HD406 SP406 | HD508 SD508 | HD516 SP516 | HD618 SP618 | HD625 SP625 | HD740 | SD948 | SD966 | SD999 |
| MAX. VELOCITY | | | | | | | | | | | | | | | | | | | | | | | | | |
| 65 in/sec | 50 | | | | | | | | | | | . | | | | | | | | | | | | | |
| 40 in/sec | | | | . | | | | | . | | | | | | | | | | | | | | | | |
| 36 in/sec | | | | | | | | | | | | | | | | | | | | | | | | | |
| 33 in/sec | | | | | | | | | | | | | | | | | | | | | | | | | |
| 25 in/sec | | | | | | | | | | | | | | | | | | | | | | | | | |
| 23 in/sec | | | | | | | | | | | | | | . | . | | | | | | | | | | |
| 20 in/sec | | | | | . | | | | | . | | | | | | | | | | | | | | | |
| 18 in/sec | | | | | | | | | | | | | | | | . | . | | | | | | | | |
| 16 in/sec | . | . | | | | | . | | | | | | | | | | | | | | | | | | |
| 14 in/sec | | | | | | | | | | | | | | | | | | . | . | | . | . | | | |
| 12 in/sec | | | | | | | | | | | | | | | | | | . | . | | . | . | . | . | . |
| 10 in/sec | | | 9 | | | . | | 9 | | | . | | | | | | | | . | | | | . | . | . |
| 8 in/sec | | | | | | | | | | | | | . | | | | | | | | | | | | |
| STROKE | | | | | | | | | | | | | | | | | | | | | | | | | |
| 60 in | | | | . | . | . | | | | | | | | | | | | | | | | | | | |
| 54 in | | | | . | . | . | | | | | | | | | | | | | | | | | | | |
| 48 in | | | | . | . | . | | | | | | . | | | | | | . | . | . | . | . | . | . | . |
| 42 in | | | | . | . | . | | | | | | . | | | | . | . | . | . | . | . | . | . | . | . |
| 36 in | | . | . | . | . | . | | | | | | . | | . | . | . | . | . | . | . | . | . | . | . | . |
| 30 in | | . | . | . | . | . | | | | | | . | | . | . | . | . | . | . | . | . | . | . | . | . |
| 24 in | . | . | . | | | | . | . | . | . | . | . | | . | . | . | . | . | . | . | . | . | . | . | . |
| 18 in | . | | | | | | . | . | . | . | . | . | | . | . | . | . | . | . | . | . | . | . | . | . |
| 12 in | . | | | | | | . | . | . | . | . | . | . | . | . | . | . | . | . | . | . | . | . | . | . |
| 6 in | . | | | | | | . | . | . | . | . | | . | . | . | . | . | . | . | . | . | . | . | . | . |
| MAX. THRUST | | | | | | | | | | | | | | | | | | | | | | | | | |
| 100,00 lbs | | | | | | | | | | | | | | | | | | | | | | | | | . |
| 66,000 lbs | | | | | | | | | | | | | | | | | | | | | | | | . | |
| 48,000 lbs | | | | | | | | | | | | | | | | | | | | | | . | | | |
| 40,000 lbs | | | | | | | | | | | | | | | | | | | | | | . | | | |
| 30,000 lbs | | | | | | | | | | | | | | | | | | | | | | | | | |
| 25,000 lbs | | | | | | | | | | | | | | | | | | | | . | | | | | |
| 18,000 lbs | | | | | | | | | | | | | | | | | | | | . | | | | | |
| 16,000 lbs | | | | | | | | | | | | | | | | | | . | . | | | | | | |
| 8,000 lbs | | | | | | | | | | | | | | | | | | . | | | | | | | |
| 6,000 lbs | | | | | | | | | | | | | | | | | . | | | | | | | | |
| 4,000 lbs | | | | | | | | | | | | | | | . | . | | | | | | | | | |
| 2,000 lbs | | | | | | . | | | | | . | . | | . | | | | | | | | | | | |
| 1,000 lbs | | | 900 | | . | | | 900 | | . | | | . | . | | | | | | | | | | | |
| 500 lbs | . | 400 | | . | | | 400 | | . | | | | | | | | | | | | | | | | |

NOTE: Stroke length may affect maximum velocity. Contact Joyce/Dayton for details.

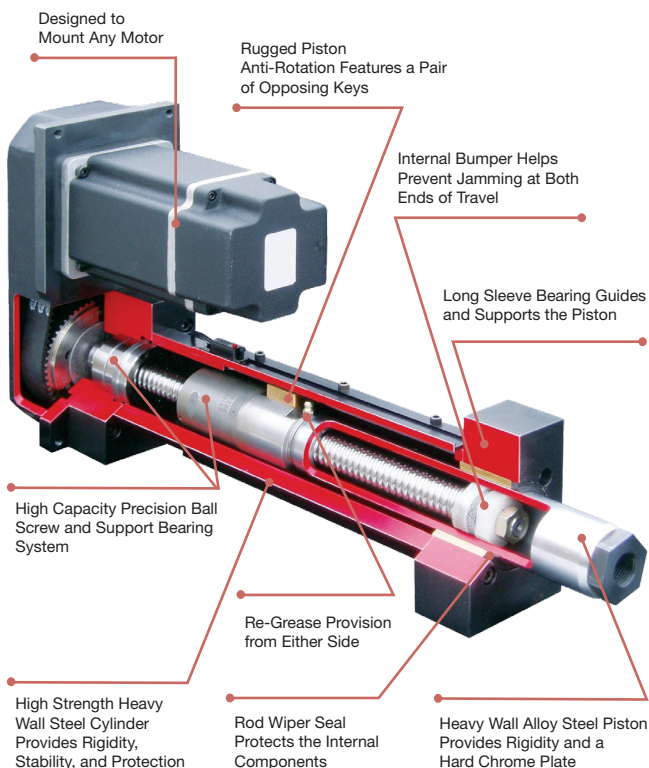
Consistent Success

IN THE TOUGHEST APPLICATIONS

EDrive linear actuators have shown consistent success in the toughest applications, e.g., high loads, high speeds, high precision, and extreme durability. Precision ball screw systems, tailored for maximum life, load and speed, provide the motion while fully enclosed, thus eliminating contamination-related failures. A long bronze nose bearing provides support for the extended piston. Rugged bronze keys in opposing steel slots provide anti-rotation and counter the tangential forces created during high speed, high frequency, and high load operation.

While other actuator designs force a particular motor decision, EDrive's linear actuators are designed to suit virtually any motor, gear box, or gearhead the customer chooses to use. Inline as well as parallel offset configurations are standard with 1:1 and 2:1 synchronous gearbelt ratios available.

Products available in Parallel Offset and Inline configurations.



Eliminator Series Actuator Shown Above

Pioneering Solutions for Today's Industry

INNOVATION - QUALITY - INTEGRITY

EDrive pioneered the evolution of precision electromechanical actuators in 1980 with our first patented design. We continue to proudly innovate and manufacture a full line of quality electric linear actuators.

The full breadth of product quality, capacity and options continues to exceed expectations. EDrive is the name you can trust for standard or fully customized actuators.



Phone: 1-937-294-6261
Toll Free: 1-800-523-5204
sales@joycedayton.com
joycedayton.com