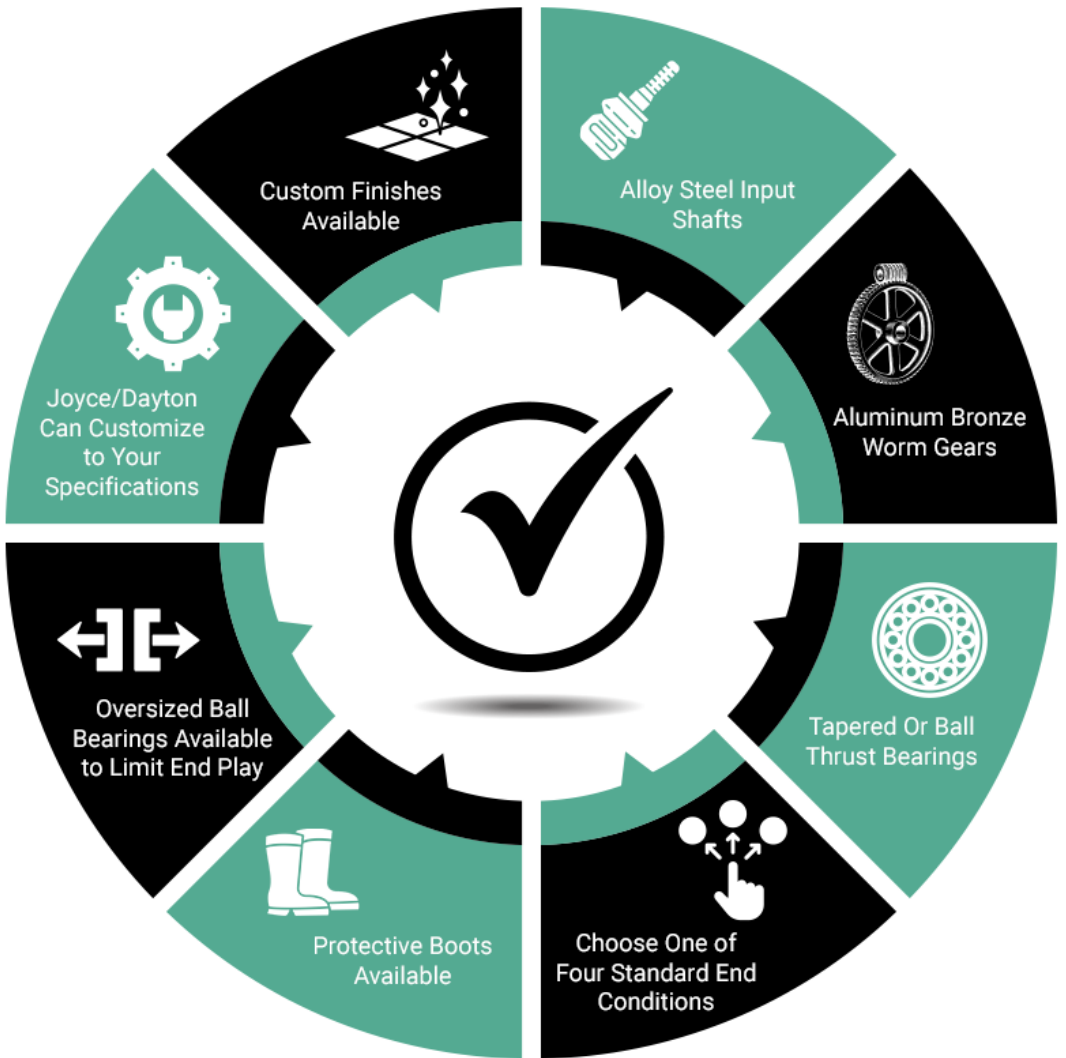


# Ball Screw Jacks

WJ250 THRU WJ201 BASE

Joyce worm gear ball screw jacks lift and precisely position loads up to 50-tons. Upright or inverted jacks operate at full capacity in tension or compression. Select from standard lead (WB, WBL) and high lead (HWB, HWBL) models to meet your travel speed and ball nut life requirements. These ball screw jacks require up to two-thirds less input torque to move the load than similarly rated machine screw jacks. They require a brake motor or external locking device to hold position.

## Features include:



Ball screw jacks include ball nuts that are about 90% efficient so the jacks require much less energy to lift an equal load than their machine screw jack counterpart. They are NOT self-locking so a brake motor needs to be included in the drive system and hand wheels are not a recommended option.

Tell us what you need or use our exclusive JAX® Online software (it's free!). We will put together complete systems with single or multiple screw jacks for you.



1-937-294-6261



WWW.joycedayton.com