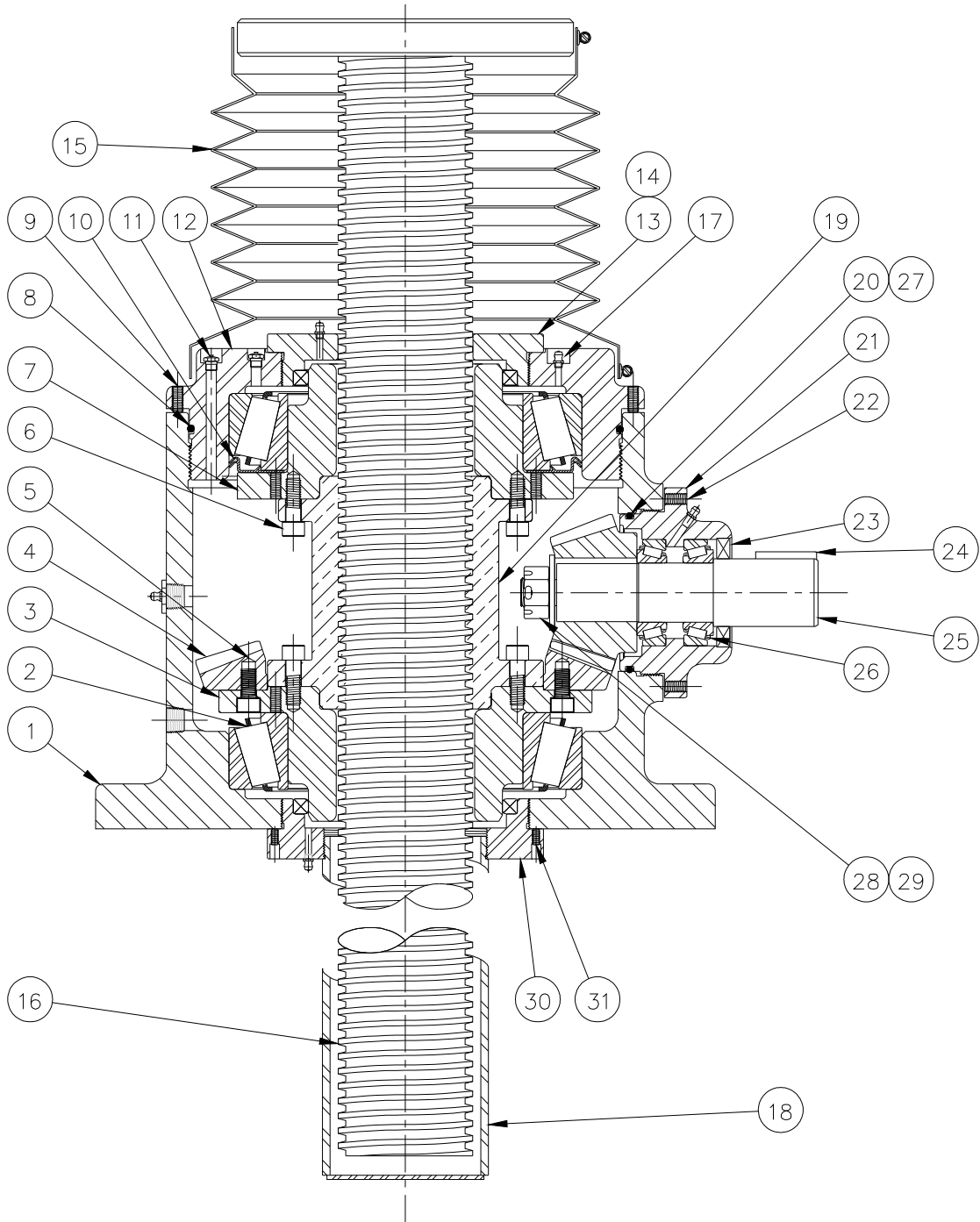


Section III Drawings

3-1 BG 450 Bevel Gear Jack



3-2 Parts list

Table 3-2 Parts list – BG 450 Bevel Gear Jack

Item	
1	Bevel Gear Jack Sleeve (1)
2	Thrust Bearing (2)
3	Gear Mounting Flange (1)
4	BG 450 Gear (1)
5	Screw (12)
6	Screw (16)
7	Bearing Mounting Flange (1)
8	O-Ring (2)
9	Set Screw (6)
10	Upper Thrust Bearing Seal (1)
11	Air Vent (2)
12	Sleeve Cap (1)
13	Bushing (1)
14	Seal (2)
15	Boot (optional) (1)
16	Lifting Screw (1)
17	Grease fitting (4)
18	Protection tube (1)
19	Lifting Nut (1)
20	O Ring, Carrier (1, 2, or 3)
21	Carrier Housing (1, 2, or 3)
22	Set screw (8, 16, or 24)
23	Input shaft seal (1, 2, or 3)
24	Key (1, 2, or 3)
25	Pinion Shaft (1, 2, or 3)
26	Pinion Shaft Bearing (2, 4, or 6)
27	Key (1, 2, or 3)
28	Nut (1, 2, or 3)
29	Cotter Pin (1, 2, or 3)
30	Bushing, Protection Tube Adapter (1)
31	Set screw (4)
	Not shown
	Nameplate (1)
	Grease fitting (1)
	Pipe Plug (1)
	Traveling Nut (BG 450 KFTN style only) (1)