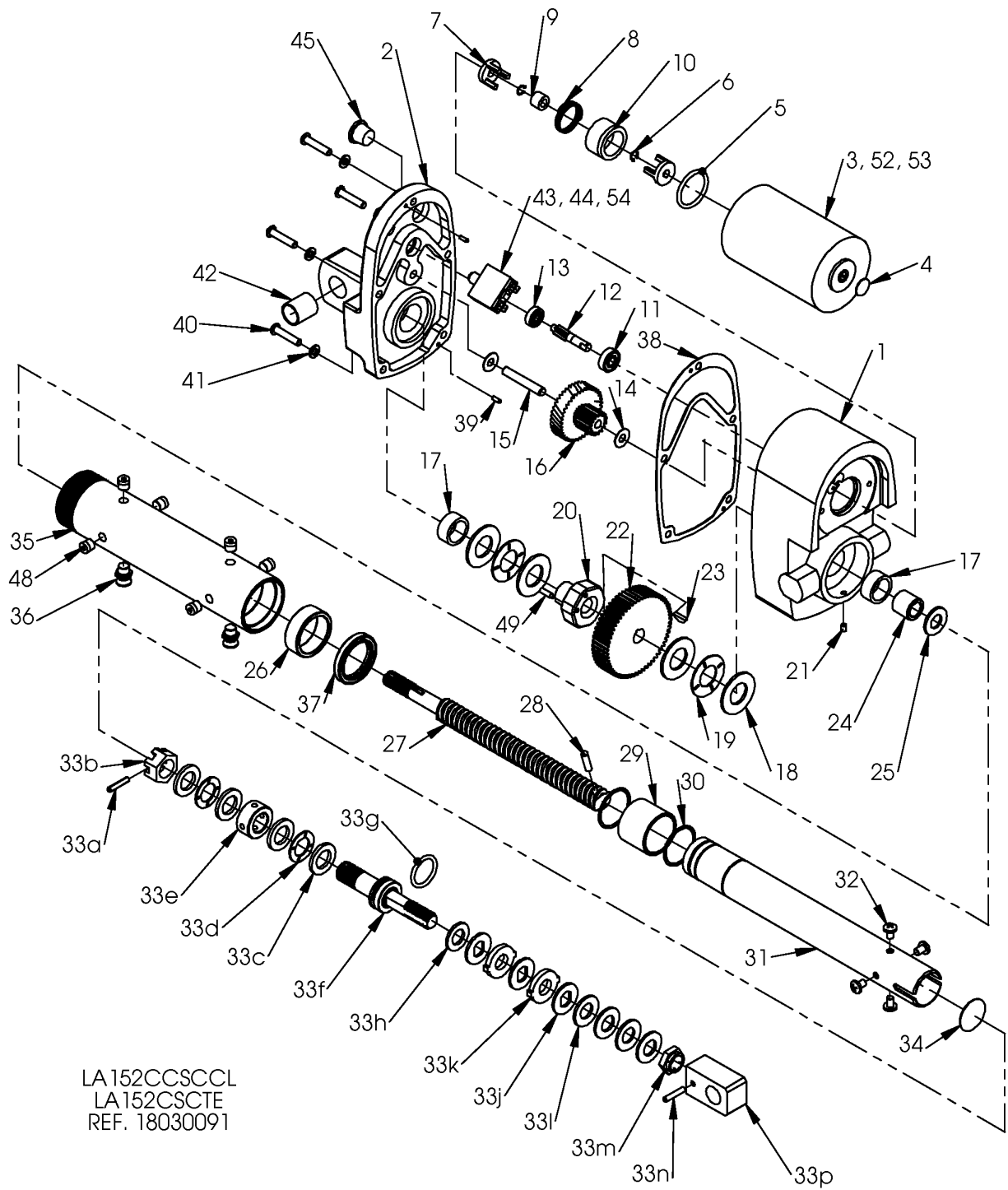


3-3 Exploded View - Linear Actuator with Clutch (18030091)



LA152CCSCCL
 LA152CSCTE
 REF. 18030091

3-4 Parts List - Linear Actuator with Clutch (18030091)

Table 3-4 Parts List

Item		Item	
1	DC Lower Housing (1)	36	Air Vent (2)
2	DC Upper Housing (1)	37	Seal (1)
3	Motor (1)	38	Gasket (1)
4	Hole Plug (1)	39	Dowel Pins (2)
5	O-Ring (1)	40	Screw (5)
6	Retaining Ring (1)	41	Lock Washer (5)
7	Coupling Half (2)	42	Upper Bushing (1)
8	Drive Spring (2)	43	Circuit Breaker (1)
9	Rubber Grommet (1)	44	Jumper Wire (1)
10	DC Insert (1)	45	Tapered Plug (1)
11	Miniature Bearing – 8mm (1)	46	Warning Decal (1)
12	Input Pinion(1)	47	Large Decal (1)
13	Miniature Bearing – 6mm (1)	48	Pipe Plug (4)
14	Thrust Washer (2)	49	Screw (1)
15	Dowel Pin (1)	50	Name Tag (1)
16	Cluster Gear (1)	51	Drive Screw (2)
17	Casting Bushing (2)	52	Hex Nut (2)
18	Thrust Washer (4)	53	Lock Washer (2)
19	Thrust Bearing (2)	54	Female Disconnect (1)
20	Spacer Nut (1)		
21	Set Screw (1)		
22	Output Gear (1)		
23	Woodruff Key (1)		
24	Gear Spacer (1)		
25	Washer (1)		
26	Guide Bearing (1)		
27	Lifting Screw (1)		
28	Dowel Pin (1)		
29	Translating Tube Bushing (1)		
30	Retaining Ring (2)		
31	Translating Tube Assembly (1)		
32	Screw (4)		
33	Slip Clutch Assembly (1)		
34	Expansion Plug (1)		
35	Outer Tube (1)		