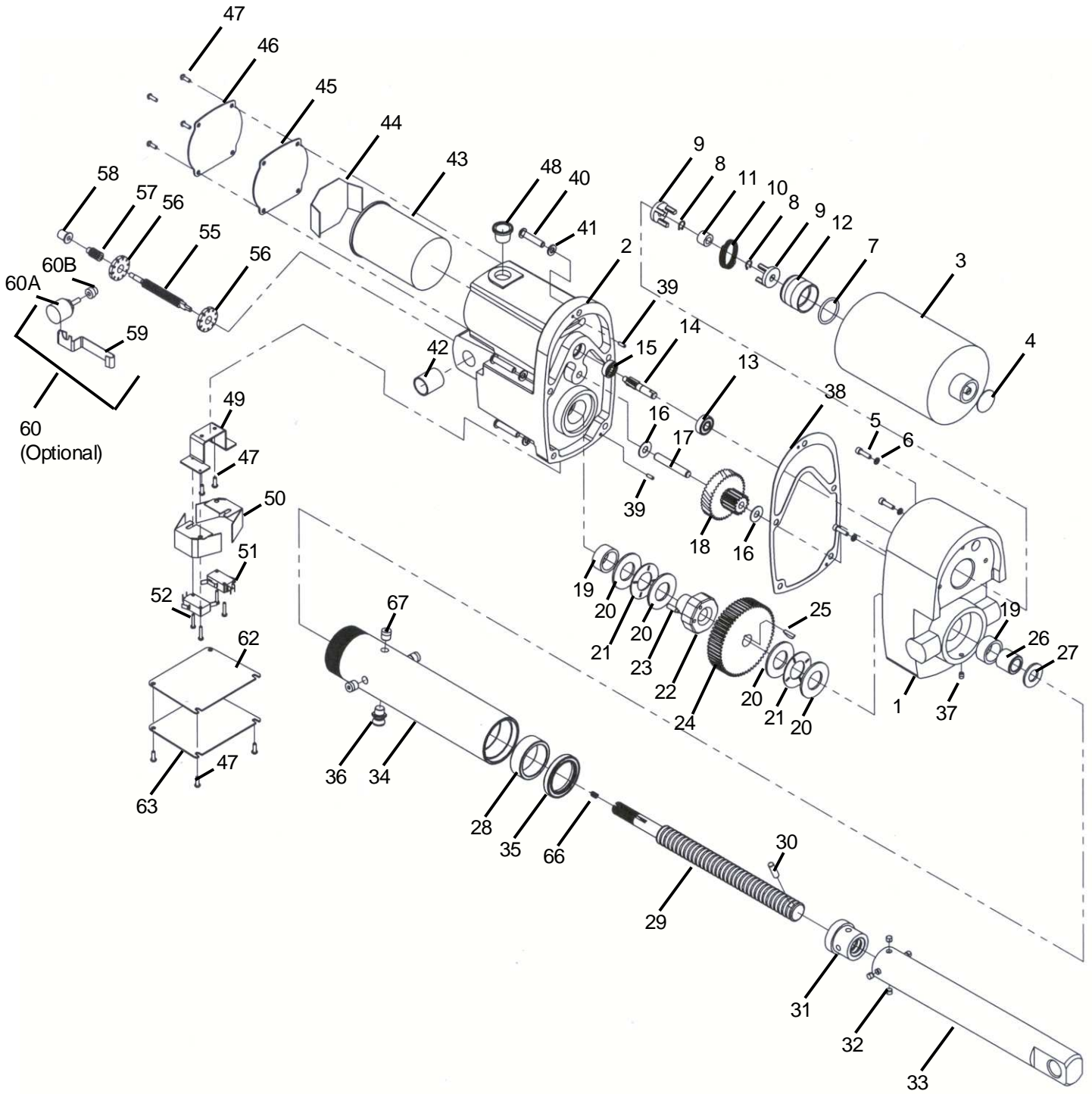


Section III Views & Parts List

3-1 Exploded View



Linear Actuator 1500 AC Assembly

3-2 Parts List – Linear Actuator 18030090

Table 3-2 Parts list

Item		Item	
1	AC Lower Housing (1)	36	Air Vent (2)
2	AC Upper Housing (1)	37	Set Screw (1)
3	Motor (1)	38	Gasket (1)
4	Hole Plug (1)	39	Dowel Pin (2)
5	Screws (3)	40	Screw (5)
6	Lock Washers (3)	41	Lock Washer (5)
7	O Ring (1)	42	Upper Bushing (1)
8	Retaining Ring (2)	43	Capacitor (1)
9	Coupling Half (2)	44	Capacitor Insulation (1)
10	Drive Spring (1)	45	Cover Gasket (1)
11	Rubber Grommet (1)	46	AC Cover (1)
12	AC Insert (1)	47	Screw (10)
13	Miniature Bearing – 8mm (1)	48	Tapered Plug (1)
14	Input Pinion (1)	49	AC Limit Switch Bracket (1)
15	Miniature Bearing – 6mm (1)	50	Limit Switch Insulation (2)
16	Thrust Washer (2)	51	Switch (2)
17	Dowel Pin (1)	52	Pan Head Screw (4)
18	Cluster Gear (1)	53	Red Jumper Wire (1)
19	Casting Bushing (2)	54	Blue Jumper Wire (1)
20	Thrust Washer (4)	55	AC Limit Switch Shaft (1)
21	Thrust Bearing (2)	56	AC Limit Switch Nut, Cam (2)
22	Spacer Nut (1)	57	Potentiometer Worm (1)
23	Set Screw (1)	58	Flanged Bronze Bearing (1)
24	Output Gear (1)	59	AC Nut Retainer (1)
25	Woodruff Key (1)	60	Potentiometer Assembly (1)
26	Gear Spacer (1)	60A	Potentiometer Gear (1)
27	Washer (1)	61	Instruction Decal (1)
	Translating Tube Assembly. Components 28-35	62	Switch Cover Gasket (1)
28	Guide Bearing (1) *	63	AC Switch Cover (1)
29	Lifting Screw (1) *	64	Warning Decal (1)
30	Dowel Pin (1) *	65	Large Decal (1)
31	Translating Tube Bushing (1) *	66	Compression Spring (1)
32	Retaining Ring (4) *	67	Pipe Plug (4)
33	AC Translating Tube Assy (1) *	68	Small Name Plate (1)
34	Outer Tube (1) *	69	Drive Screw (2)
35	Seal (1) *		

* Replacement and spare parts available only an assembly, see Section 2-2 Spare Parts.