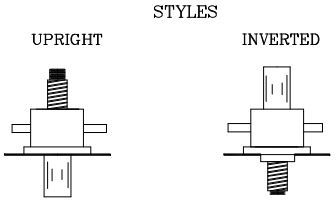
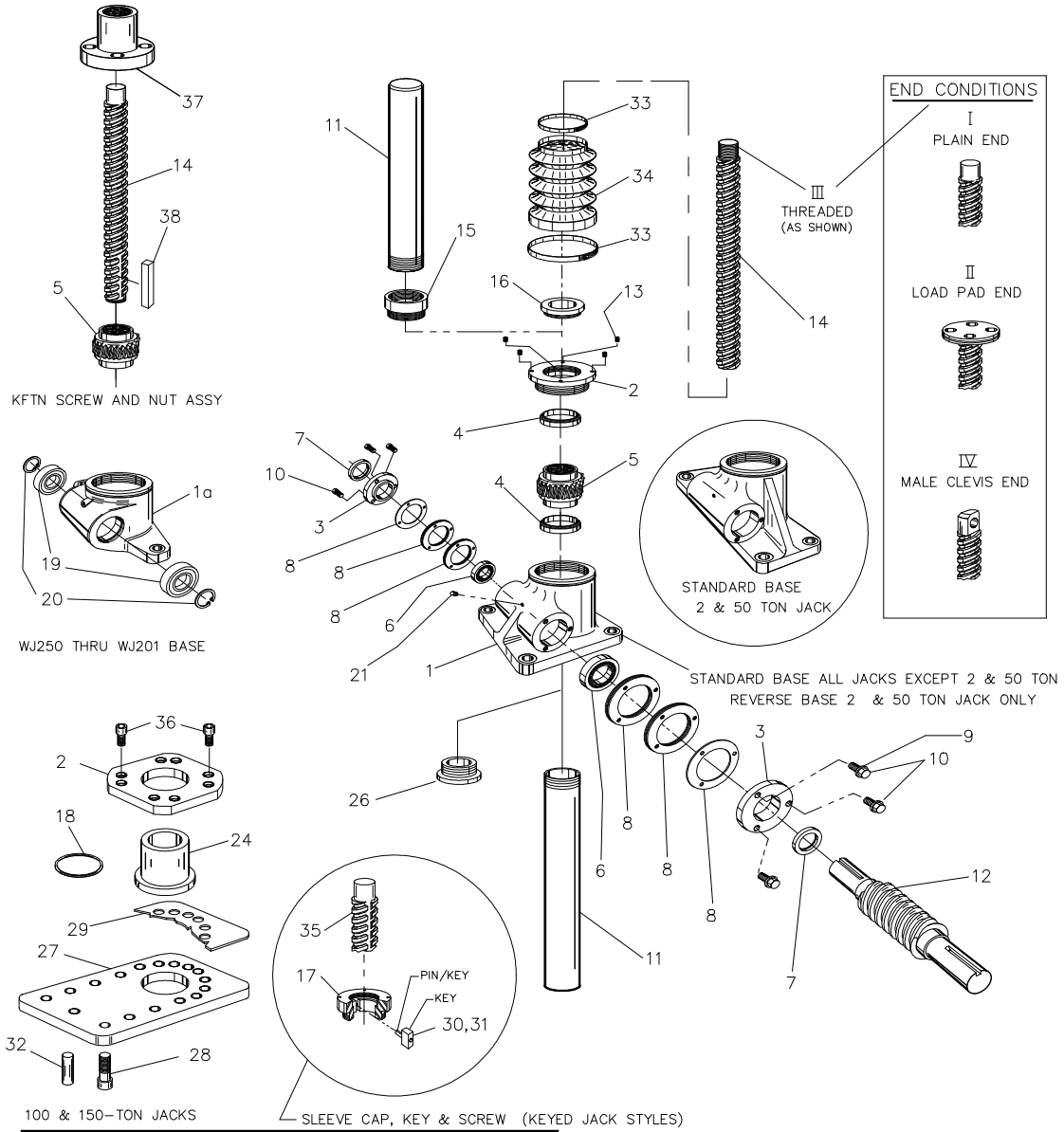


3-1 Exploded View

PARTS LIST FOR ALL JOYCE STANDARD WORM GEAR SCREW JACKS Models "WJ", "DWJ", "WJT", "SWJ", And "DSWJ" Traveling Screw, Traveling Nut And Keyed For Traveling Nut Versions (Upright Styles shown for purpose of illustration)



3-2 Parts List – Translating and KFTN jacks

Parts list Table

Item	Translating	Item	KFTN- Keyed For Traveling Nut
1	Sleeve	1	Sleeve
1a	Sleeve (WJ250 – WJ201 jack)	1a	Sleeve (WJ250 – WJ201 jack)
2	Sleeve Cap	2	Sleeve Cap
3	Bearing Cap (2)	3	Bearing Cap (2)
4	Thrust Bearing	4	Thrust Bearing
5	Worm Gear	5	Worm Gear
6	Worm Shaft Bearing (2)	6	Worm Shaft Bearing (2)
7	Worm Shaft Seal (2)	7	Worm Shaft Seal (2)
8	Shims	8	Shims
9	Bearing Cap Lockwasher (6-8)	9	Bearing Cap Lockwasher (6-8)
10	Bearing Cap Screw (6-8)	10	Bearing Cap Screw (6-8)
11	Protection Tube	12	Worm (Input Shaft)
12	Worm (Input Shaft)	13	Set Screw - sleeve cap (4)
13	Set Screw – sleeve cap (4)	14	Lifting Screw
14	Lifting Screw	16	Seal
15	Protection Tube Adapter (Inverted only)	18	O-ring seal**
17	Keyed Sleeve Cap*	19	Bushing (miniature jacks only) (2)
18	O-ring seal**	20	Retaining Ring (WJ250 - WJ51 jacks only) (2)
19	Bushing (miniature jacks only) (2)	21	Grease Fitting
20	Retaining Ring (WJ250 - WJ51 jacks only) (2)	22	Drive Screw (2)
21	Grease Fitting	23	Name Plate
22	Drive Screw (2)	24	Top Bushing**
23	Name Plate	26	Bushing (inverted only)
24	Top Bushing**	27	Base Plate**
26	Bushing (inverted only)	28	Sleeve Bolts (16)
27	Base Plate**	29	Base Shim
28	Sleeve Bolts (16)	32	Alignment Pin
29	Base Shim	33	Boot Clamp
30	Key* – keyed jacks	34	Bellows Boot
31	Key screw* – keyed jacks	37	Traveling Nut
32	Alignment Pin	38	Key - KFTN
33	Boot Clamp		
34	Bellows Boot		
35	Keyed Screw*		
36	Sleeve cap screws (8)**		

* Keyed Jack styles only

** 100 & 150 ton jacks only