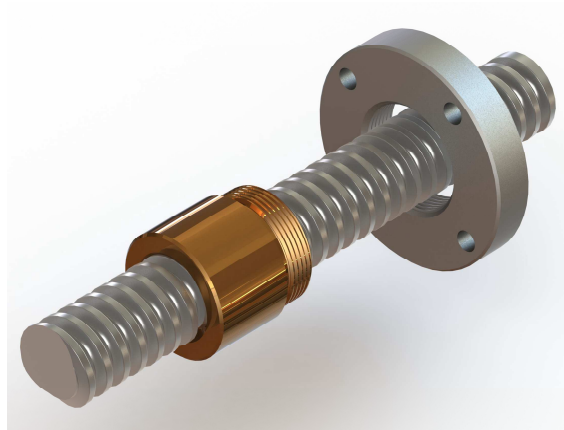


Joyce/Dayton Screws, Nuts and Flanges



Joyce/Dayton offers a full line of screw and nut assemblies. They are available in Acme 2C or Stub Acme as well as in Metric (trapezoidal) thread forms. Each is manufactured to the same high quality standards customers have come to expect from Joyce/Dayton products. Bronze nuts and steel flanges are available separately or as finished assemblies.

All standard screw diameters listed are in stock and ready to be cut to your specified length. Depending on screw length and quantity required, most screws could be shipped within 1 to 2 days.

Please contact our Application Engineers to discuss all of your special requirements, including custom screw diameters, leads, end configurations, and custom nut and flange designs.

Acme Screw and Nut

- Standard Acme 2C or Stub Acme threads from 1/2" dia. to 6" dia.
- Standard leads ranging from .010" to 1.0"
- Screws are available in lengths specified by the customer
- Alloy and stainless steel screws available in many diameters
- All screw sizes are available with right-hand threads
- Many screw sizes are available with left-hand threads
- Modifications (M) available for specific end conditions
- Contact us with your special requirements for size and lead

Metric (Trapezoidal) Screw and Nut

- Standard Metric (Trapezoidal) threads from 20 mm to 55 mm
- Standard leads ranging from 5 mm to 12 mm
- Screws are available in lengths specified by the customer
- Screws are made of alloy steel
- All screw sizes are available with right-hand threads
- Modifications (M) available for specific end conditions
- Contact us with your special requirements for size and lead

Standard Product Specifications

ACME Screw and Nut Selections								
Screw Dia Turns/Inch	Screw Description	Screw Lead (in.)	Starts	Standard Screw Length	Minimum Root Dia. (inches)	Nut Description (Bronze)	Flange Description (Steel)	Flange & Nut Assembly Description
1/2"- 8	SS050R013A	0.125	1	12'	0.383	SN050R013B		SF050R013
5/8"- 8	SS063R013S	0.125	1	12'	0.507	SN063R013B	FL-0937	SF063R013
5/8"- 2*	SS063R050A	0.500	2	12'	0.426	SN063R050B		SF063R050
3/4"- 5	AS075R020A	0.200	1	12'	0.502	AN075R020B		AF075R020
3/4"- 5	AS075R020S	0.200	1	12'	0.502	AN075R020B	FL-1000	AF075R020
7/8"- 2*	AS088R050A	0.500	2	12'	0.574	AN088R050B		AF088R050
1"- 10	AS100R010A	0.100	1	12'	0.857	AN100R010B		AF100R010
1"- 4	AS100R025A	0.250	1	12'	0.699	AN100R025B		AF100R025
1"- 4	AS100L025A	0.250	1	12'	0.699	AN100L025B	FL-1375	AF100L025
1"- 4	AS100R025S	0.250	1	12'	0.699	AN100R025B		AF100R025
1"- 2*	AS100R050A	0.500	2	12'	0.699	AN100R050B		AF100R050
1"- 1**	SS100R100A	1.000	10	12'	0.930	SN100R100B		SF100R100
1 1/4"- 4	AS125R025A	0.250	1	12'	0.947	AN125R025B		SF125R025
1 1/2"- 4	AS150R025A	0.250	1	12'	1.196	AN150R025B		AF150R025
1 1/2"- 2*	AS150R050A	0.500	2	12'	1.196	AN150R050B		AF150R050
1 1/2"- 2*	AS150L050A	0.500	2	12'	1.196	AN150L050B	FL-1967	AF150L050
1 1/2"- 2 2/3	AS150R038A	0.375	1	12'	1.066	AN150R038B		AF150R038
1 1/2"- 2 2/3	SS150R038A	0.375	1	20'	1.216	SN150R038B		SF150R038
1 1/2"- 2 2/3	SS150L038A	0.375	1	12'	1.216	SN150L038B		SF150L038
1 1/2"- 2 2/3	SS150R038S	0.375	1	12'	1.216	SN150R038B		SF150R038
2"- 4	AS200R025A	0.250	1	12'	1.695	AN200R025B		AF200R025
2"- 2	AS200R050A	0.500	1	20'	1.435	AN200R050B	FL-2548	AF200R050
2"- 2	AS200L050A	0.500	1	20'	1.435	AN200L050B		AF200L050
2"- 2	AS200R050S	0.500	1	12'	1.435	AN200R050B		AF200R050
2 1/4"- 4	AS225R025A	0.250	1	20'	1.944	AN225R025B		AF225R025
2 1/4"- 4	AS225R025S	0.250	1	12'	1.944	AN225R025B		AF225R025
2 1/4"- 2	AS225R050A	0.500	1	20'	1.685	AN225R050B		AF225R050
2 1/4"- 2	AS225R050S	0.500	1	12'	1.685	AN225R050B	FL-3137	AF225R050
2 1/2"- 2	AS250R050A	0.500	1	20'	1.934	AN250R050B		AF250R050
2 1/2"- 2	AS250L050A	0.500	1	20'	1.934	AN250L050B		AF250L050
2 1/2"- 2	AS250R050S	0.500	1	12'	1.934	AN250R050B		AF250R050
3 3/8"- 1 1/2	SS338R067A	0.667	1	20'	2.802	SN338R067B	FL-4325	SF338R067
3 1/2"- 1 1/2	AS350R067A	0.667	1	20'	2.760	AN350R067B		AF350R067
3 3/4"- 1 1/2	AS375R067A	0.667	1	20'	3.009	AN375R067B	FL-4750	AF375R067
4 1/2"- 1 1/2	AS450R067A	0.667	1	20'	3.757	AN450R067B	FL-5497	AF450R067
5"- 1 1/2	AS500R067A	0.667	1	20'	4.256	AN500R067B	FL-7066	AF500R067
6"- 1 1/3	AS600R075A	0.750	1	20'	5.169	AN600R075B	FL-7847	AF600R075

Metric (Trapezoidal) Screw and Nut Selections

Screw Dia mm/Turn	Screw Description	Screw Lead (mm)	Starts	Standard Screw Length	Minimum Root Dia. (mm)	Nut Description (Bronze)	Flange Description (Steel)	Flange & Nut Assembly Description
TR 20 - 5	TS020R005A	5	1	12'	14.044	TN020R005B	FL-3000	TF020R005
TR 22 - 5	TS022R005A	5	1	12'	16.044	TN022R005B	FL-4000	TF022R005
TR 26 - 6	TS026R006A	6	1	12'	18.463	TN026R006B		TF026R006
TR 30 - 6	TS030R006A	6	1	12'	22.463	TN030R006B	FL-5500	TF030R006
TR 40 - 9	TS040R009A	9	1	12'	29.391	TN040R009B		TF040R009
TR 55 - 12	TS055R012A	12	1	12'	41.236	TN055R012B	FL-7200	TF055R012

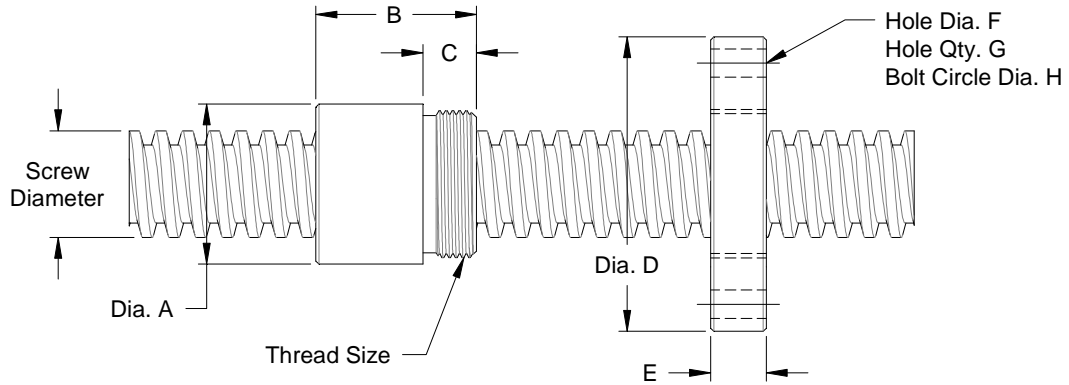
All alloy steel screw material is 1045 CDS, except SS050R013A, which is 1018 CDS

All stainless steel screw material is 316 SS, except SS063R013S, which is 304 SS

***Double lead (2 starts)

***Multiple lead (more than 2 starts)

Screw, Nut and Flange Dimensions – Standard Products



ACME Screw, Nut, and Flange Dimensions (inch)									
Screw Diameter	Dia. A	B	C	Thread Size	Dia. D	E	F	G	H
1/2"	1.12	.75	.50	.937"-16 UN	2.60	.53	.266	4	2.090
5/8"		1.00		1.000"-18 UN					
3/4"		1.25		1.375"-16 UN					
7/8"	1.50	1.50	.812	1.967"-18 UN	4.20	.832	.397	4	2.260
1"		1.50		2.548"-18 UN					
1 1/4"	2.12	1.75	1.560	3.137"-12 UN	5.38	1.580	.656	6	4.375
1 1/2"		2.30		4.325"-12 UN					
2"	2.75	2.75	.880	2.548"-18 UN	4.94	.895	.531	6	4.062
2 1/4"	3.38	3.06	2.000	4.750"-12 UN	9.00	2.020	1.063		
2 1/2"		3.38		1.560			3.137"-12 UN	9.75	1.031
3 3/8"	4.50	4.50	2.000	4.325"-12 UN	7.38	2.020	.781	6	6.250
3 1/2"				4.50					
3 3/4"	5.00	5.50	2.000	4.750"-12 UN	9.00	2.020	1.063	4	7.000
4 1/2"	6.00	6.00	2.000	5.497"-12 UN	9.75	2.020	1.031	6	8.000
5"	7.50	7.50	2.000	7.066"-8 UN	12.00	2.020	1.125	8	10.000
6"	8.00	7.00	2.000	7.847"-8 UN	14.00	2.020		6	12.000

Metric (Trapezoidal) Screw, Nut, and Flange Dimensions (mm)									
Screw Diameter	Dia. A	B	C	Thread Size	Dia. D	E	F	G	H
20mm	34	32	13	M30 x 1.5	75	14	7	4	60
22mm	45	45	15	M40 x 1.5	85	16	7		70
26mm									90
30mm	60	60	20	M55 x 1.5	120	21	11		90
40mm									112
55mm	80	75	25	M72 x 2.0	142	26	17	6	112

Explanation of Product Descriptions - Screw, Nut, and Flange Assemblies

For a list of standard products see [Screw and Nut Selection Guide](#).

	A	S	075	R	020	S	X	000.00
Thread Form	_____							
English								
A - Acme								
S - Stub Acme								
Metric								
T - Trapezoidal								
Component	_____							
S - Screw								
N - Nut								
F - Flange & Nut Assembly								
Screw Diameter	_____							
<i>English</i>	<i>English</i>	<i>Metric</i>						
050 - 1/2"	225 - 2 1/4"	020 - 20mm						
063 - 5/8"	250 - 2 1/2"	022 - 22mm						
075 - 3/4"	338 - 3 3/8"	026 - 26mm						
088 - 7/8"	350 - 3 1/2"	030 - 30mm						
100 - 1"	375 - 3 3/4"	040 - 40mm						
125 - 1 1/4"	450 - 4 1/2"	055 - 55mm						
150 - 1 1/2"	500 - 5"							
200 - 2"	600 - 6"							
Thread Direction	_____							
R - Right-hand								
L - Left-hand								
Lead	_____							
<i>English</i>	<i>Metric</i>							
010 - .100"	005 - 5mm							
013 - .125"	006 - 6mm							
020 - .200"	009 - 9mm							
025 - .250"	012 - 12mm							
038 - .375"								
050 - .500"								
067 - .667"								
075 - .750"								
100 - 1.00"								
Screw Material	_____							
A - Alloy Steel								
S - Stainless Steel								
Special Manufacturing Options	_____							
M - Special Manufacturing (Customer to provide description and/or drawing)								
X - Standard								
Screw Length 000.00	_____							
Enter value in inches with decimal if needed								
Available lengths vary based on the outside diameter of the screw.								